

## Product datasheet for **TA504018BM**

### TIMP2 Mouse Monoclonal Antibody (HRP conjugated) [Clone ID: OTI2G7]

#### Product data:

Product Type:	Primary Antibodies
Clone Name:	OTI2G7
Applications:	FC, IHC, WB
Recommended Dilution:	WB 1:500~2000, IHC 1:150, FLOW 1:100
Reactivity:	Human, Mouse, Rat
Host:	Mouse
Isotype:	IgG1
Clonality:	Monoclonal
Immunogen:	Full length human recombinant protein of human TIMP2(NP_003246) produced in HEK293T cell.
Formulation:	PBS (pH 7.3) containing 1% BSA, 50% glycerol.
Concentration:	0.5 mg/ml
Purification:	Purified from mouse ascites fluids or tissue culture supernatant by affinity chromatography (protein A/G)
Conjugation:	HRP
Storage:	Store at -20°C as received.
Stability:	Stable for 12 months from date of receipt.
Predicted Protein Size:	21.7 kDa
Gene Name:	TIMP metalloproteinase inhibitor 2
Database Link:	<a href="#">NP_003246</a> <a href="#">Entrez Gene 21858 Mouse</a> <a href="#">Entrez Gene 29543 Rat</a> <a href="#">Entrez Gene 7077 Human</a> <a href="#">P16035</a>



[View online »](#)

**Background:**

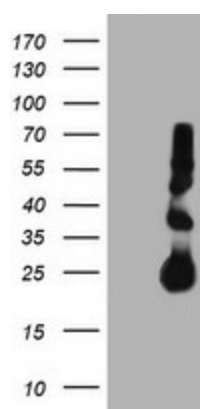
This gene is a member of the TIMP gene family. The proteins encoded by this gene family are natural inhibitors of the matrix metalloproteinases, a group of peptidases involved in degradation of the extracellular matrix. In addition to an inhibitory role against metalloproteinases, the encoded protein has a unique role among TIMP family members in its ability to directly suppress the proliferation of endothelial cells. As a result, the encoded protein may be critical to the maintenance of tissue homeostasis by suppressing the proliferation of quiescent tissues in response to angiogenic factors, and by inhibiting protease activity in tissues undergoing remodelling of the extracellular matrix. [provided by RefSeq]

**Synonyms:**

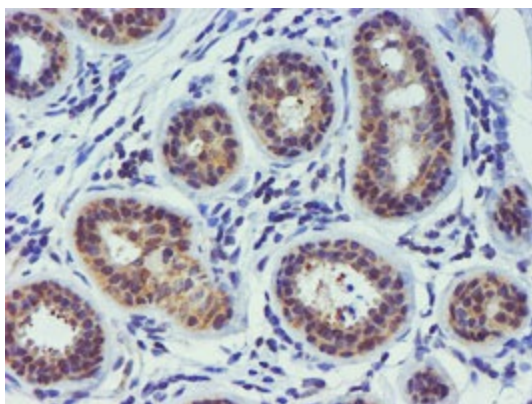
CSC-21K; DDC8

**Protein Families:**

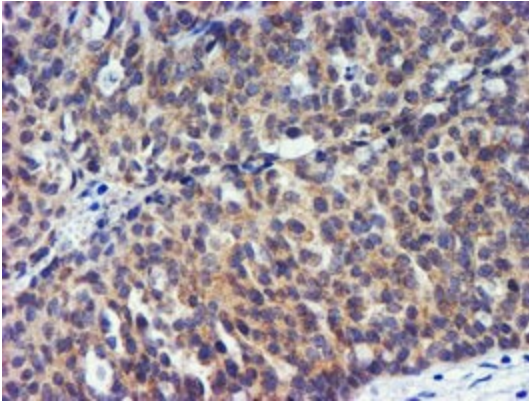
Druggable Genome, Secreted Protein

**Product images:**

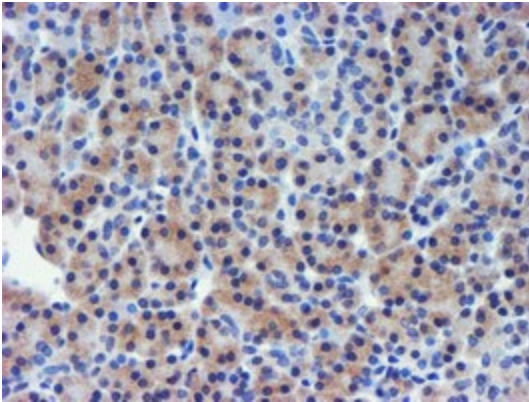
HEK293T cells were transfected with the pCMV6-ENTRY control (Left lane) or pCMV6-ENTRY TIMP2 ([RC209796], Right lane) cDNA for 48 hrs and lysed. Equivalent amounts of cell lysates (5 ug per lane) were separated by SDS-PAGE and immunoblotted with anti-TIMP2. Positive lysates [LY418809] (100ug) and [LC418809] (20ug) can be purchased separately from OriGene.



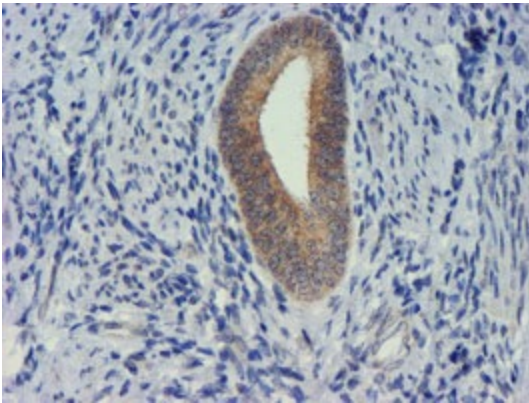
Immunohistochemical staining of paraffin-embedded Human breast tissue within the normal limits using anti-TIMP2 mouse monoclonal antibody. (Heat-induced epitope retrieval by 10mM citric buffer, pH6.0, 100°C for 10min, [TA504018])



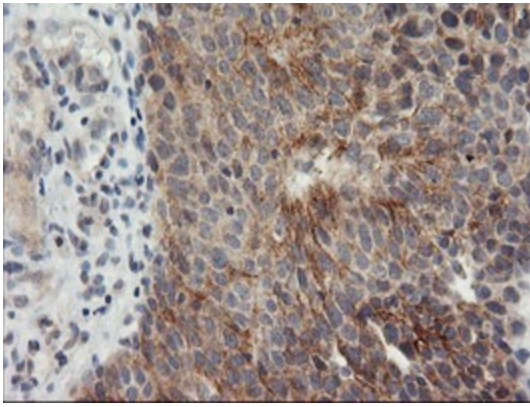
Immunohistochemical staining of paraffin-embedded Adenocarcinoma of Human ovary tissue using anti-TIMP2 mouse monoclonal antibody. (Heat-induced epitope retrieval by 10mM citric buffer, pH6.0, 100°C for 10min, [TA504018])



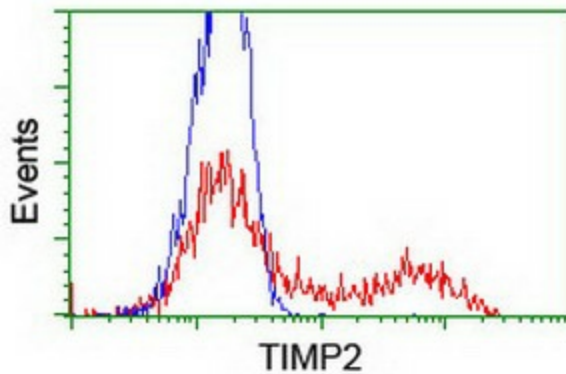
Immunohistochemical staining of paraffin-embedded Human pancreas tissue within the normal limits using anti-TIMP2 mouse monoclonal antibody. (Heat-induced epitope retrieval by 10mM citric buffer, pH6.0, 100°C for 10min, [TA504018])



Immunohistochemical staining of paraffin-embedded Human endometrium tissue within the normal limits using anti-TIMP2 mouse monoclonal antibody. (Heat-induced epitope retrieval by 10mM citric buffer, pH6.0, 100°C for 10min, [TA504018])



Immunohistochemical staining of paraffin-embedded Carcinoma of Human bladder tissue using anti-TIMP2 mouse monoclonal antibody. (Heat-induced epitope retrieval by 10mM citric buffer, pH6.0, 100°C for 10min, [TA504018])



HEK293T cells transfected with either [RC209796] overexpress plasmid (Red) or empty vector control plasmid (Blue) were immunostained by anti-TIMP2 antibody ([TA504018]), and then analyzed by flow cytometry.