

Product datasheet for **TA504005**

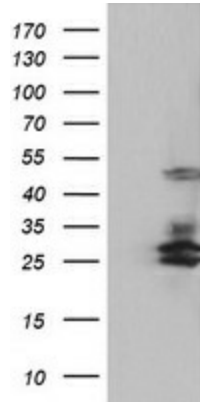
SERPINB2 Mouse Monoclonal Antibody [Clone ID: OTI4E6]

Product data:

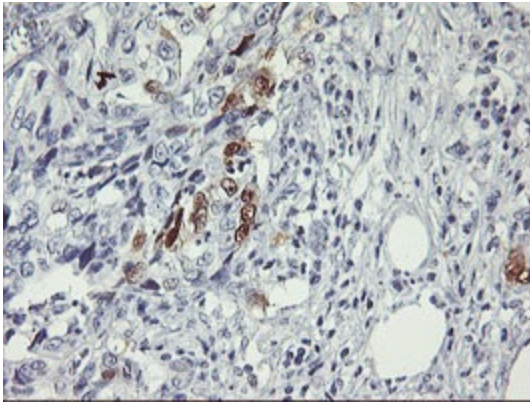
Product Type:	Primary Antibodies
Clone Name:	OTI4E6
Applications:	FC, IHC, WB
Recommended Dilution:	WB 1:2000, IHC 1:150, FLOW 1:100
Reactivity:	Human
Host:	Mouse
Isotype:	IgG1
Clonality:	Monoclonal
Immunogen:	Full length human recombinant protein of human SERPINB2(NP_002566) produced in HEK293T cell.
Formulation:	PBS (pH 7.3) containing 1% BSA, 50% glycerol and 0.02% sodium azide.
Concentration:	0.6 mg/ml
Purification:	Purified from mouse ascites fluids or tissue culture supernatant by affinity chromatography (protein A/G)
Conjugation:	Unconjugated
Storage:	Store at -20°C as received.
Stability:	Stable for 12 months from date of receipt.
Predicted Protein Size:	46.4 kDa
Gene Name:	serpin family B member 2
Database Link:	NP_002566 Entrez Gene 5055 Human P05120
Synonyms:	HsT1201; PAI; PAI-2; PAI2; PLANH2
Protein Families:	Druggable Genome, Secreted Protein



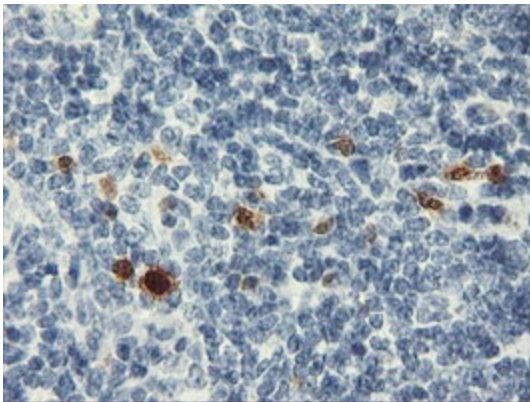
[View online »](#)

Product images:

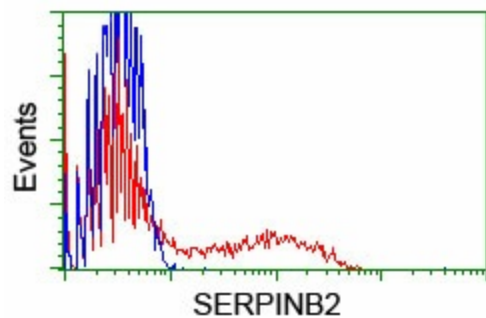
HEK293T cells were transfected with the pCMV6-ENTRY control (Left lane) or pCMV6-ENTRY SERPINB2 ([RC203139], Right lane) cDNA for 48 hrs and lysed. Equivalent amounts of cell lysates (5 ug per lane) were separated by SDS-PAGE and immunoblotted with anti-SERPINB2. Positive lysates [LY400915] (100ug) and [LC400915] (20ug) can be purchased separately from OriGene.



Immunohistochemical staining of paraffin-embedded Carcinoma of Human pancreas tissue using anti-SERPINB2 mouse monoclonal antibody. (Heat-induced epitope retrieval by 10mM citric buffer, pH6.0, 100°C for 10min, TA504005)



Immunohistochemical staining of paraffin-embedded Human lymphoma tissue using anti-SERPINB2 mouse monoclonal antibody. (Heat-induced epitope retrieval by 10mM citric buffer, pH6.0, 100°C for 10min, TA504005)



HEK293T cells transfected with either [RC203139] overexpress plasmid (Red) or empty vector control plasmid (Blue) were immunostained by anti-SERPINB2 antibody (TA504005), and then analyzed by flow cytometry.