

## Product datasheet for **TA504003BM**

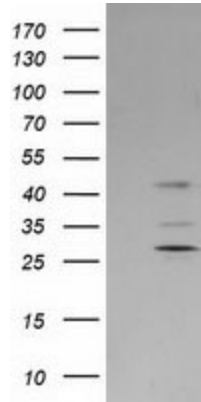
### **SERPINB2 Mouse Monoclonal Antibody (HRP conjugated) [Clone ID: OTI4A3]**

#### **Product data:**

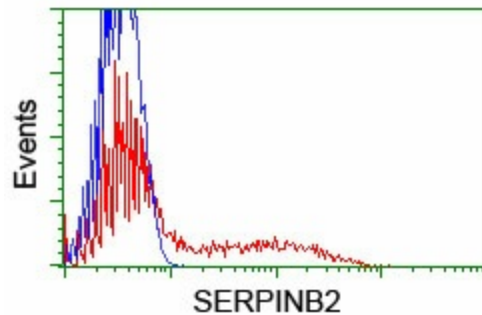
<b>Product Type:</b>	Primary Antibodies
<b>Clone Name:</b>	OTI4A3
<b>Applications:</b>	FC, WB
<b>Recommended Dilution:</b>	WB 1:500, FLOW 1:100
<b>Reactivity:</b>	Human
<b>Host:</b>	Mouse
<b>Isotype:</b>	IgG1
<b>Clonality:</b>	Monoclonal
<b>Immunogen:</b>	Full length human recombinant protein of human SERPINB2(NP_002566) produced in HEK293T cell.
<b>Formulation:</b>	PBS (pH 7.3) containing 1% BSA, 50% glycerol.
<b>Concentration:</b>	0.5 mg/ml
<b>Purification:</b>	Purified from mouse ascites fluids or tissue culture supernatant by affinity chromatography (protein A/G)
<b>Conjugation:</b>	HRP
<b>Storage:</b>	Store at -20°C as received.
<b>Stability:</b>	Stable for 12 months from date of receipt.
<b>Predicted Protein Size:</b>	46.4 kDa
<b>Gene Name:</b>	serpin family B member 2
<b>Database Link:</b>	<a href="#">NP_002566</a> <a href="#">Entrez Gene 5055 Human</a> <a href="#">P05120</a>
<b>Synonyms:</b>	HsT1201; PAI; PAI-2; PAI2; PLANH2
<b>Protein Families:</b>	Druggable Genome, Secreted Protein



[View online »](#)

**Product images:**

HEK293T cells were transfected with the pCMV6-ENTRY control (Left lane) or pCMV6-ENTRY SERPINB2 ([RC203139], Right lane) cDNA for 48 hrs and lysed. Equivalent amounts of cell lysates (5 ug per lane) were separated by SDS-PAGE and immunoblotted with anti-SERPINB2. Positive lysates [LY400915] (100ug) and [LC400915] (20ug) can be purchased separately from OriGene.



HEK293T cells transfected with either [RC203139] overexpress plasmid (Red) or empty vector control plasmid (Blue) were immunostained by anti-SERPINB2 antibody ([TA504003]), and then analyzed by flow cytometry.