

## Product datasheet for **TA504003AM**

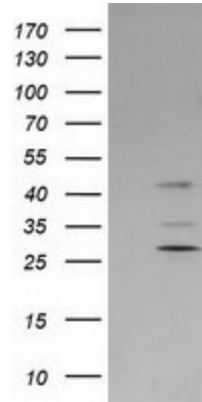
### **SERPINB2 Mouse Monoclonal Antibody (Biotin conjugated) [Clone ID: OTI4A3]**

#### **Product data:**

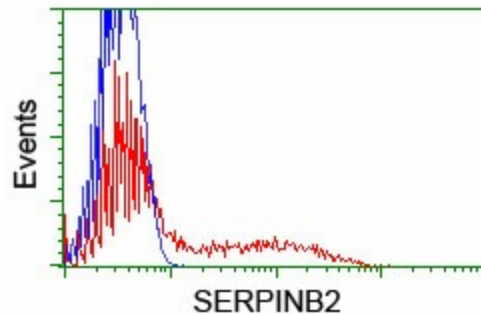
|                                |   |
|--------------------------------|---|
| <b>Product Type:</b>           | Primary Antibodies  |
| <b>Clone Name:</b>             | OTI4A3  |
| <b>Applications:</b>           | FC, WB  |
| <b>Recommended Dilution:</b>   | WB 1:500, FLOW 1:100  |
| <b>Reactivity:</b>             | Human   |
| <b>Host:</b>                   | Mouse   |
| <b>Isotype:</b>                | IgG1  |
| <b>Clonality:</b>              | Monoclonal  |
| <b>Immunogen:</b>              | Full length human recombinant protein of human SERPINB2(NP_002566) produced in HEK293T cell.              |
| <b>Formulation:</b>            | PBS (pH 7.3) containing 1% BSA, 50% glycerol and 0.02% sodium azide.                                      |
| <b>Concentration:</b>          | 0.5 mg/ml   |
| <b>Purification:</b>           | Purified from mouse ascites fluids or tissue culture supernatant by affinity chromatography (protein A/G) |
| <b>Conjugation:</b>            | Biotin  |
| <b>Storage:</b>                | Store at -20°C as received.   |
| <b>Stability:</b>              | Stable for 12 months from date of receipt.  |
| <b>Predicted Protein Size:</b> | 46.4 kDa  |
| <b>Gene Name:</b>              | serpin family B member 2  |
| <b>Database Link:</b>          | <a href="#">NP_002566</a><br><a href="#">Entrez Gene 5055 Human</a><br><a href="#">P05120</a>             |
| <b>Synonyms:</b>               | HsT1201; PAI; PAI-2; PAI2; PLANH2   |
| <b>Protein Families:</b>       | Druggable Genome, Secreted Protein  |



[View online »](#)

**Product images:**

HEK293T cells were transfected with the pCMV6-ENTRY control (Left lane) or pCMV6-ENTRY SERPINB2 ([RC203139], Right lane) cDNA for 48 hrs and lysed. Equivalent amounts of cell lysates (5 ug per lane) were separated by SDS-PAGE and immunoblotted with anti-SERPINB2. Positive lysates [LY400915] (100ug) and [LC400915] (20ug) can be purchased separately from OriGene.



HEK293T cells transfected with either [RC203139] overexpress plasmid (Red) or empty vector control plasmid (Blue) were immunostained by anti-SERPINB2 antibody ([TA504003]), and then analyzed by flow cytometry.