

Product datasheet for **TA504001BM**

HES1 Mouse Monoclonal Antibody (HRP conjugated) [Clone ID: OTI2D2]

Product data:

Product Type:	Primary Antibodies
Clone Name:	OTI2D2
Applications:	FC, IF, IHC, WB
Recommended Dilution:	WB 1:2000, IHC 1:150, IF 1:100, FLOW 1:100
Reactivity:	Human, Mouse, Rat
Host:	Mouse
Isotype:	IgG1
Clonality:	Monoclonal
Immunogen:	Full length human recombinant protein of human HES1(NP_005515) produced in HEK293T cell.
Formulation:	PBS (pH 7.3) containing 1% BSA, 50% glycerol.
Concentration:	0.5 mg/ml
Purification:	Purified from mouse ascites fluids or tissue culture supernatant by affinity chromatography (protein A/G)
Conjugation:	HRP
Storage:	Store at -20°C as received.
Stability:	Stable for 12 months from date of receipt.
Predicted Protein Size:	29.4 kDa
Gene Name:	hes family bHLH transcription factor 1
Database Link:	NP_005515 Entrez Gene 15205 Mouse Entrez Gene 29577 Rat Entrez Gene 3280 Human Q14469
Background:	This protein belongs to the basic helix-loop-helix family of transcription factors. It is a transcriptional repressor of genes that require a bHLH protein for their transcription. The protein has a particular type of basic domain that contains a helix interrupting protein that binds to the N-box rather than the canonical E-box. [provided by RefSeq]
Synonyms:	bHLHb39; HES-1; HHL; HRY

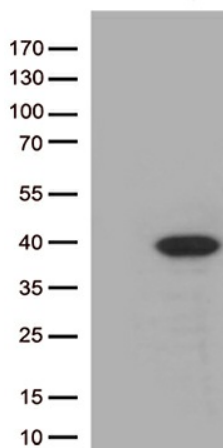


[View online »](#)

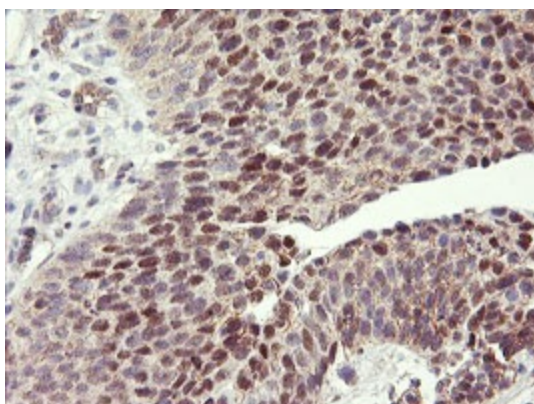
Protein Families: Adult stem cells, Cancer stem cells, Druggable Genome, ES Cell Differentiation/IPS, Stem cell relevant signaling - DSL/Notch pathway, Transcription Factors

Protein Pathways: Maturity onset diabetes of the young, Notch signaling pathway

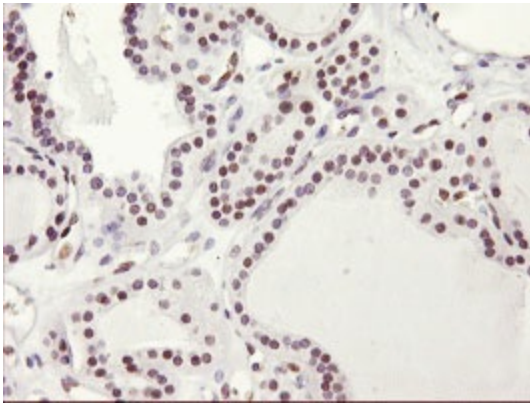
Product images:



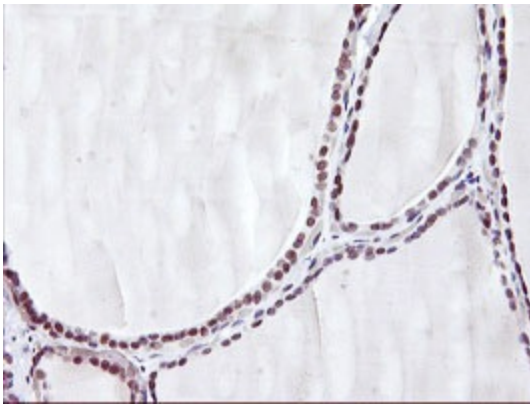
HEK293T cells were transfected with the pCMV6-ENTRY control (Cat# [PS100001], Left lane) or pCMV6-ENTRY HES1 (Cat# [RC211709], Right lane) cDNA for 48 hrs and lysed. Equivalent amounts of cell lysates (5 ug per lane) were separated by SDS-PAGE and immunoblotted with anti-HES1 (Cat# [TA504001])(1:500).



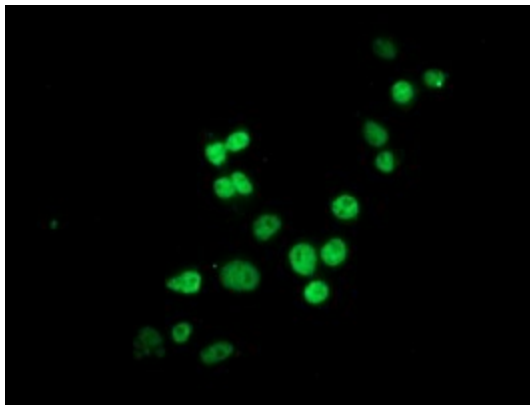
Immunohistochemical staining of paraffin-embedded Carcinoma of Human bladder tissue using anti-HES1 mouse monoclonal antibody. (Heat-induced epitope retrieval by 10mM citric buffer, pH6.0, 100°C for 10min, [TA504001])



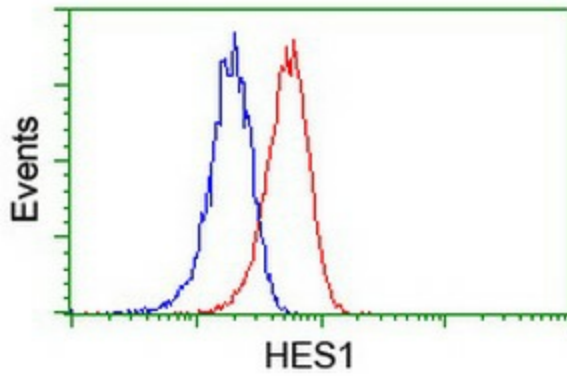
Immunohistochemical staining of paraffin-embedded Carcinoma of Human thyroid tissue using anti-HES1 mouse monoclonal antibody. (Heat-induced epitope retrieval by 10mM citric buffer, pH6.0, 100°C for 10min, [TA504001])



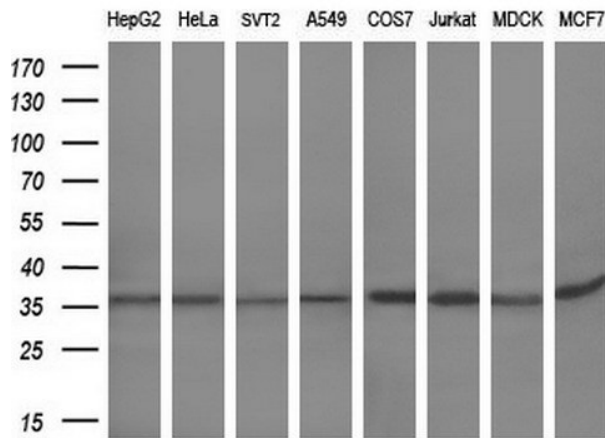
Immunohistochemical staining of paraffin-embedded Human thyroid tissue within the normal limits using anti-HES1 mouse monoclonal antibody. (Heat-induced epitope retrieval by 10mM citric buffer, pH6.0, 100°C for 10min, [TA504001])



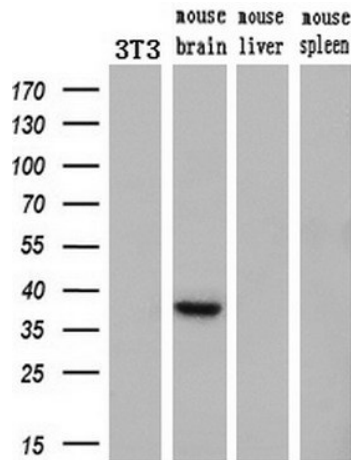
Anti-HES1 mouse monoclonal antibody ([TA504001]) immunofluorescent staining of COS7 cells transiently transfected by pCMV6-ENTRY HES1 ([RC211709]).



Flow cytometric Analysis of Jurkat cells, using anti-HES1 antibody ([TA504001]), (Red), compared to a nonspecific negative control antibody, (Blue).



Western blot analysis of extracts (10ug) from 8 different cell lines by using anti-HES1 monoclonal antibody (1:200).



Western blot analysis of extracts (10ug) from a mouse cell line and 3 different mouse tissues by using anti-HES1 monoclonal antibody (1:200).