

Product datasheet for **TA504000AM**

RGS16 Mouse Monoclonal Antibody (Biotin conjugated) [Clone ID: OTI3B4]

Product data:

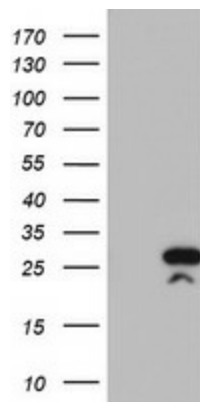
Product Type:	Primary Antibodies
Clone Name:	OTI3B4
Applications:	IHC, WB
Recommended Dilution:	WB 1:2000, IHC 1:150
Reactivity:	Human, Mouse, Rat
Host:	Mouse
Isotype:	IgG1
Clonality:	Monoclonal
Immunogen:	Full length human recombinant protein of human RGS16(NP_002919) produced in HEK293T cell.
Formulation:	PBS (pH 7.3) containing 1% BSA, 50% glycerol and 0.02% sodium azide.
Concentration:	0.5 mg/ml
Purification:	Purified from mouse ascites fluids or tissue culture supernatant by affinity chromatography (protein A/G)
Conjugation:	Biotin
Storage:	Store at -20°C as received.
Stability:	Stable for 12 months from date of receipt.
Predicted Protein Size:	22.6 kDa
Gene Name:	regulator of G protein signaling 16
Database Link:	NP_002919 Entrez Gene 19734 Mouse Entrez Gene 360857 Rat Entrez Gene 6004 Human O15492
Background:	The protein encoded by this gene belongs to the 'regulator of G protein signaling' family. It inhibits signal transduction by increasing the GTPase activity of G protein alpha subunits. It also may play a role in regulating the kinetics of signaling in the phototransduction cascade. [provided by RefSeq]
Synonyms:	A28-RGS14; A28-RGS14P; RGS-R



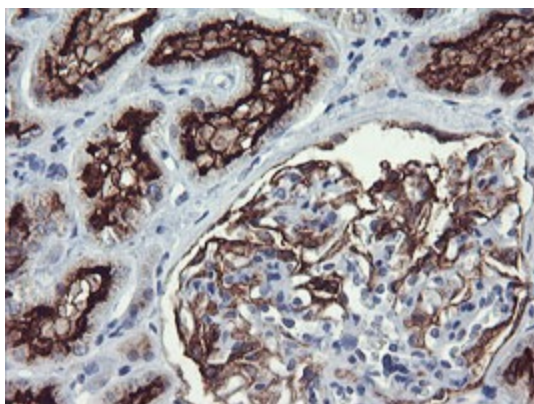
[View online »](#)

Protein Families: Druggable Genome

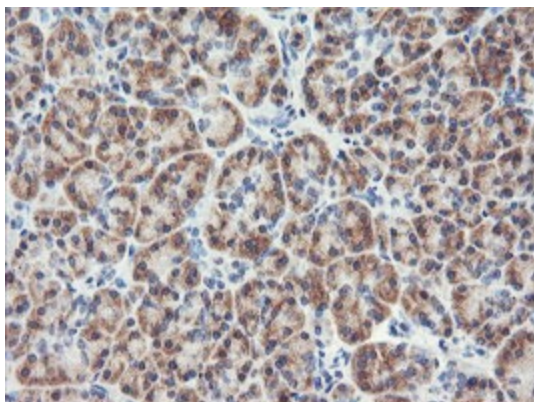
Product images:



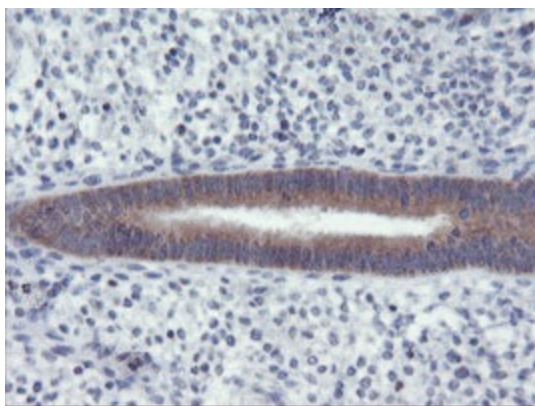
HEK293T cells were transfected with the pCMV6-ENTRY control (Left lane) or pCMV6-ENTRY RGS16 ([RC202430], Right lane) cDNA for 48 hrs and lysed. Equivalent amounts of cell lysates (5 ug per lane) were separated by SDS-PAGE and immunoblotted with anti-RGS16. Positive lysates [LY419009] (100ug) and [LC419009] (20ug) can be purchased separately from OriGene.



Immunohistochemical staining of paraffin-embedded Human Kidney tissue within the normal limits using anti-RGS16 mouse monoclonal antibody. (Heat-induced epitope retrieval by 10mM citric buffer, pH6.0, 100°C for 10min, [TA504000])



Immunohistochemical staining of paraffin-embedded Human pancreas tissue within the normal limits using anti-RGS16 mouse monoclonal antibody. (Heat-induced epitope retrieval by 10mM citric buffer, pH6.0, 100°C for 10min, [TA504000])



Immunohistochemical staining of paraffin-embedded Human endometrium tissue within the normal limits using anti-RGS16 mouse monoclonal antibody. (Heat-induced epitope retrieval by 10mM citric buffer, pH6.0, 100°C for 10min, [TA504000])