

## Product datasheet for **TA503986M**

### PFKP Mouse Monoclonal Antibody [Clone ID: OTI5F7]

#### Product data:

|                         |                                                                                                                                                                                                                       |
|-------------------------|-----------------------------------------------------------------------------------------------------------------------------------------------------------------------------------------------------------------------|
| Product Type:           | Primary Antibodies                                                                                                                                                                                                    |
| Clone Name:             | OTI5F7                                                                                                                                                                                                                |
| Applications:           | FC, IHC, WB                                                                                                                                                                                                           |
| Recommended Dilution:   | WB 1:500~2000, IHC 1:150, FLOW 1:100                                                                                                                                                                                  |
| Reactivity:             | Human, Monkey, Mouse, Rat                                                                                                                                                                                             |
| Host:                   | Mouse                                                                                                                                                                                                                 |
| Isotype:                | IgG1                                                                                                                                                                                                                  |
| Clonality:              | Monoclonal                                                                                                                                                                                                            |
| Immunogen:              | Full length human recombinant protein of human PFKP(NP_002618) produced in HEK293T cell.                                                                                                                              |
| Formulation:            | PBS (pH 7.3) containing 1% BSA, 50% glycerol and 0.02% sodium azide.                                                                                                                                                  |
| Concentration:          | 0.46 mg/ml                                                                                                                                                                                                            |
| Purification:           | Purified from mouse ascites fluids or tissue culture supernatant by affinity chromatography (protein A/G)                                                                                                             |
| Conjugation:            | Unconjugated                                                                                                                                                                                                          |
| Storage:                | Store at -20°C as received.                                                                                                                                                                                           |
| Stability:              | Stable for 12 months from date of receipt.                                                                                                                                                                            |
| Predicted Protein Size: | 85.4 kDa                                                                                                                                                                                                              |
| Gene Name:              | phosphofructokinase, platelet                                                                                                                                                                                         |
| Database Link:          | <a href="#">NP_002618</a><br><a href="#">Entrez Gene 56421 Mouse</a> <a href="#">Entrez Gene 60416 Rat</a> <a href="#">Entrez Gene 722330 Monkey</a> <a href="#">Entrez Gene 5214 Human</a><br><a href="#">Q01813</a> |


[View online »](#)

**Background:**

The PFKP gene encodes the platelet isoform of phosphofructokinase (PFK) (ATP:D-fructose-6-phosphate-1-phosphotransferase, EC 2.7.1.11). PFK catalyzes the irreversible conversion of fructose-6-phosphate to fructose-1,6-bisphosphate and is a key regulatory enzyme in glycolysis. The PFKP gene, which maps to chromosome 10p, is also expressed in fibroblasts. See also the muscle (PFKM; MIM 610681) and liver (PFKL; MIM 171860) isoforms of phosphofructokinase, which map to chromosomes 12q13 and 21q22, respectively. Vora (1981) [PubMed 6451249] determined that full tetrameric phosphofructokinase enzyme expressed in platelets can be composed of subunits P4, P3L, and P2L2. [supplied by OMIM]

**Synonyms:**

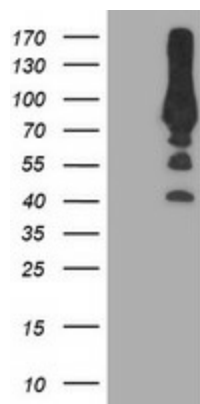
ATP-PFK; PFK-C; PFK-P; PFKF

**Protein Families:**

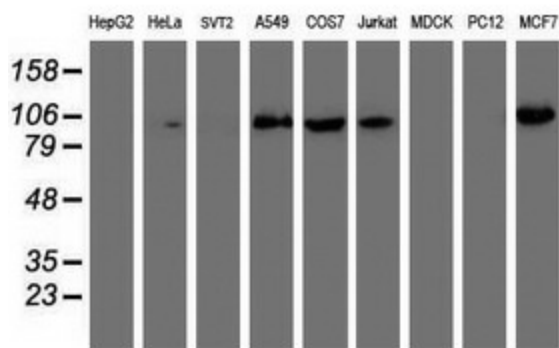
Druggable Genome

**Protein Pathways:**

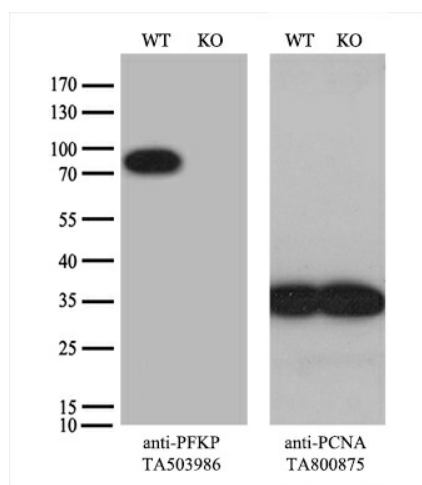
Fructose and mannose metabolism, Galactose metabolism, Glycolysis / Gluconeogenesis, Metabolic pathways, Pentose phosphate pathway

**Product images:**


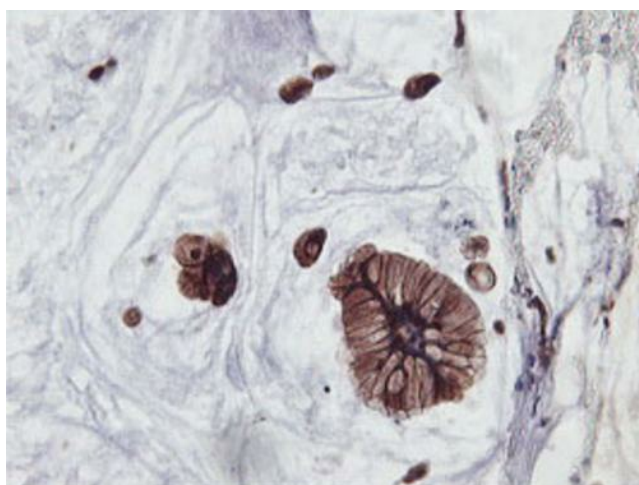
HEK293T cells were transfected with the pCMV6-ENTRY control (Left lane) or pCMV6-ENTRY PFKP ([RC200673], Right lane) cDNA for 48 hrs and lysed. Equivalent amounts of cell lysates (5 ug per lane) were separated by SDS-PAGE and immunoblotted with anti-PFKP. Positive lysates [LY400932] (100ug) and [LC400932] (20ug) can be purchased separately from OriGene.



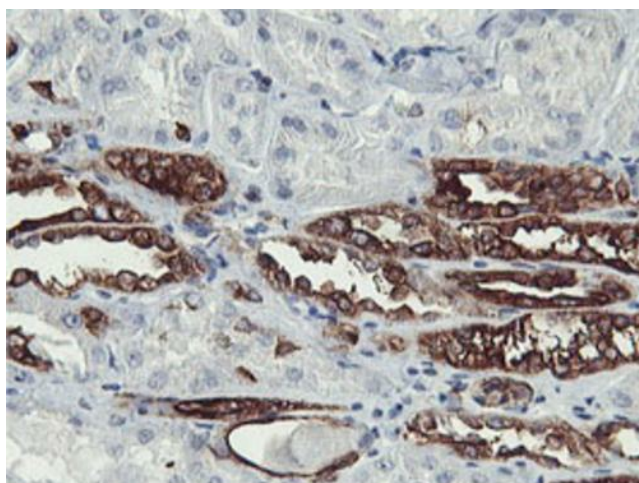
Western blot analysis of extracts (35ug) from 9 different cell lines by using anti-PFKP monoclonal antibody.



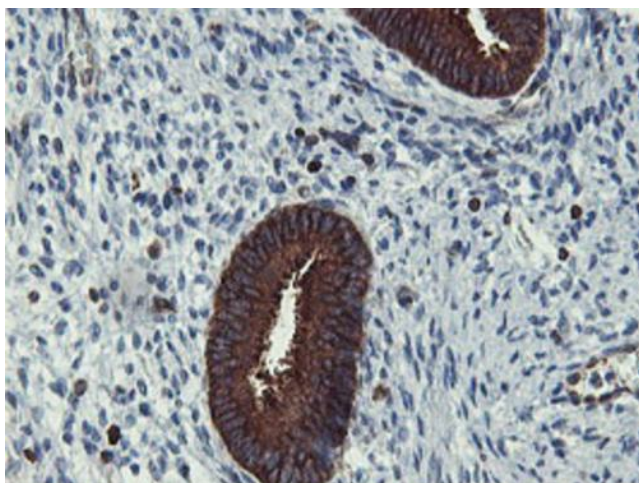
Equivalent amounts of cell lysates (10 ug per lane) of wild-type HeLa cells (WT, Cat# LC810HELA) and PFKP-Knockout HeLa cells (KO, Cat# [LC831752]) were separated by SDS-PAGE and immunoblotted with anti-PFKP monoclonal antibody [TA503986] (1:500). Then the blotted membrane was stripped and reprobed with anti-PCNA antibody as a loading control.



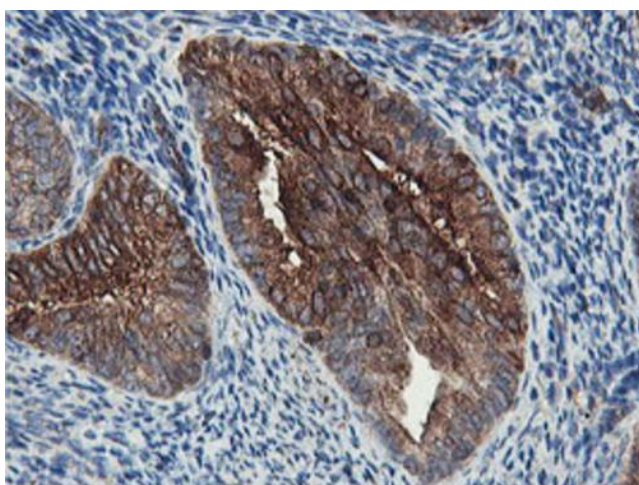
Immunohistochemical staining of paraffin-embedded Adenocarcinoma of Human colon tissue using anti-PFKP mouse monoclonal antibody. Heat-induced epitope retrieval by EDTA solution buffer pH 8.0 at 120°C for 3 min.



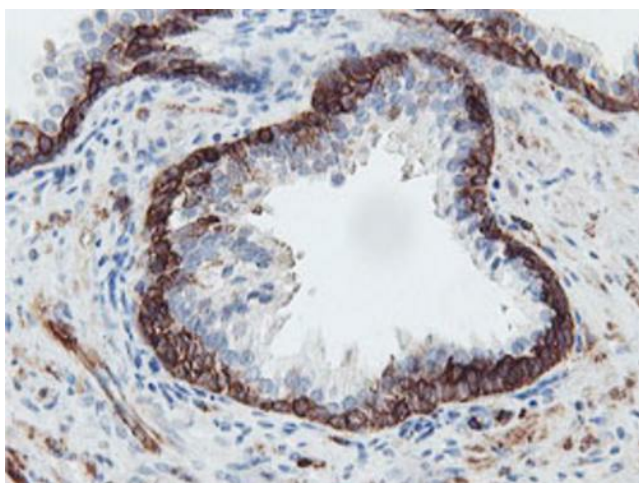
Immunohistochemical staining of paraffin-embedded Human Kidney tissue within the normal limits using anti-PFKP mouse monoclonal antibody. Heat-induced epitope retrieval by EDTA solution buffer pH 8.0 at 120°C for 3 min.



Immunohistochemical staining of paraffin-embedded Human endometrium tissue within the normal limits using anti-PFKP mouse monoclonal antibody. Heat-induced epitope retrieval by EDTA solution buffer pH 8.0 at 120°C for 3 min.

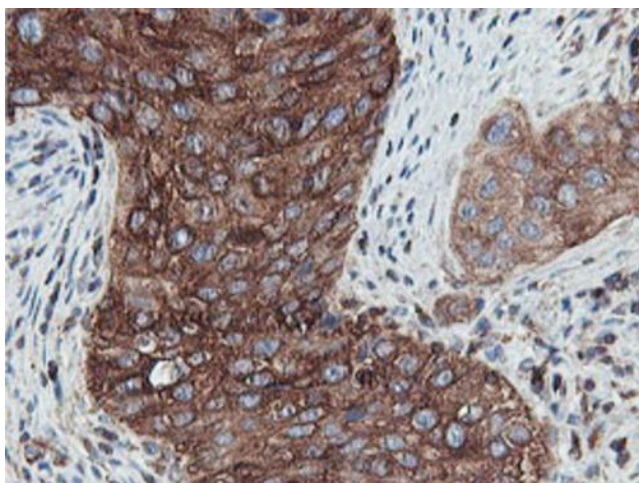


Immunohistochemical staining of paraffin-embedded Adenocarcinoma of Human endometrium tissue using anti-PFKP mouse monoclonal antibody. Heat-induced epitope retrieval by EDTA solution buffer pH 8.0 at 120°C for 3 min.

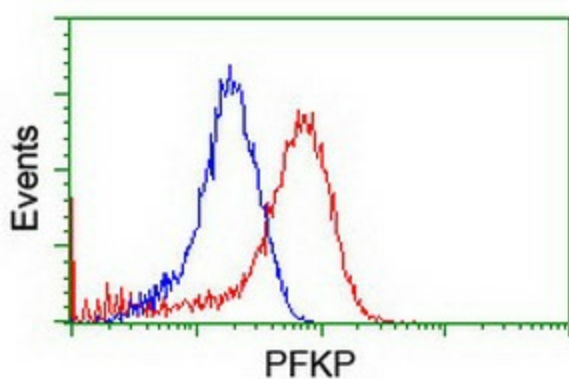


Immunohistochemical staining of paraffin-embedded Human prostate tissue within the normal limits using anti-PFKP mouse monoclonal antibody. Heat-induced epitope retrieval by EDTA solution buffer pH 8.0 at 120°C for 3 min.

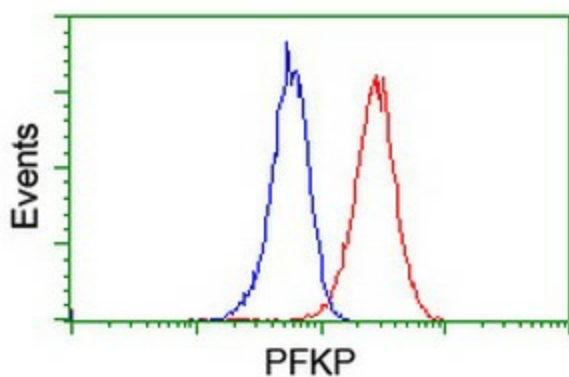




Immunohistochemical staining of paraffin-embedded Carcinoma of Human bladder tissue using anti-PFKP mouse monoclonal antibody. Heat-induced epitope retrieval by EDTA solution buffer pH 8.0 at 120°C for 3 min.



Flow cytometric Analysis of HeLa cells, using anti-PFKP antibody ([TA503986]), (Red), compared to a nonspecific negative control antibody, (Blue).



Flow cytometric Analysis of Jurkat cells, using anti-PFKP antibody ([TA503986]), (Red), compared to a nonspecific negative control antibody, (Blue).