

## Product datasheet for **TA503980**

### PFKP Mouse Monoclonal Antibody [Clone ID: OTI3A12]

#### Product data:

|                         |   |
|-------------------------|---|
| Product Type:           | Primary Antibodies  |
| Clone Name:             | OTI3A12   |
| Applications:           | FC, IF, IHC, WB   |
| Recommended Dilution:   | WB 1:500~2000, IHC 1:150, IF 1:100, FLOW 1:100  |
| Reactivity:             | Human, Mouse, Rat   |
| Host:                   | Mouse   |
| Isotype:                | IgG1  |
| Clonality:              | Monoclonal  |
| Immunogen:              | Full length human recombinant protein of human PFKP(NP_002618) produced in HEK293T cell.  |
| Formulation:            | PBS (PH 7.3) containing 1% BSA, 50% glycerol and 0.02% sodium azide.  |
| Concentration:          | 0.61 mg/ml  |
| Purification:           | Purified from mouse ascites fluids or tissue culture supernatant by affinity chromatography (protein A/G)   |
| Conjugation:            | Unconjugated  |
| Storage:                | Store at -20°C as received.   |
| Stability:              | Stable for 12 months from date of receipt.  |
| Predicted Protein Size: | 85.4 kDa  |
| Gene Name:              | phosphofructokinase, platelet   |
| Database Link:          | <a href="#">NP_002618</a><br><a href="#">Entrez Gene 56421 Mouse</a> <a href="#">Entrez Gene 60416 Rat</a> <a href="#">Entrez Gene 5214 Human</a><br><a href="#">Q01813</a> |



[View online »](#)

**Background:**

The PFKP gene encodes the platelet isoform of phosphofructokinase (PFK) (ATP:D-fructose-6-phosphate-1-phosphotransferase, EC 2.7.1.11). PFK catalyzes the irreversible conversion of fructose-6-phosphate to fructose-1,6-bisphosphate and is a key regulatory enzyme in glycolysis. The PFKP gene, which maps to chromosome 10p, is also expressed in fibroblasts. See also the muscle (PFKM; MIM 610681) and liver (PFKL; MIM 171860) isoforms of phosphofructokinase, which map to chromosomes 12q13 and 21q22, respectively. Vora (1981) [PubMed 6451249] determined that full tetrameric phosphofructokinase enzyme expressed in platelets can be composed of subunits P4, P3L, and P2L2. [supplied by OMIM]

**Synonyms:**

ATP-PFK; PFK-C; PFK-P; PFKF

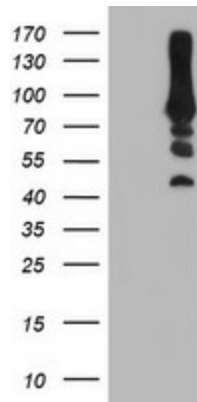
**Protein Families:**

Druggable Genome

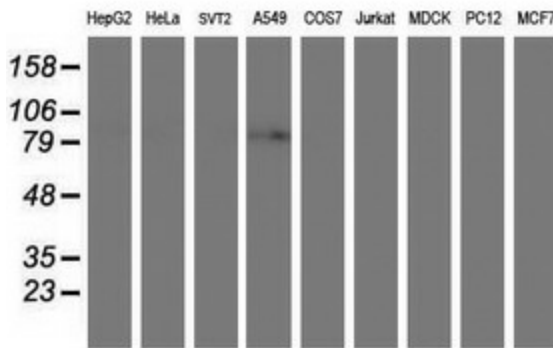
**Protein Pathways:**

Fructose and mannose metabolism, Galactose metabolism, Glycolysis / Gluconeogenesis, Metabolic pathways, Pentose phosphate pathway

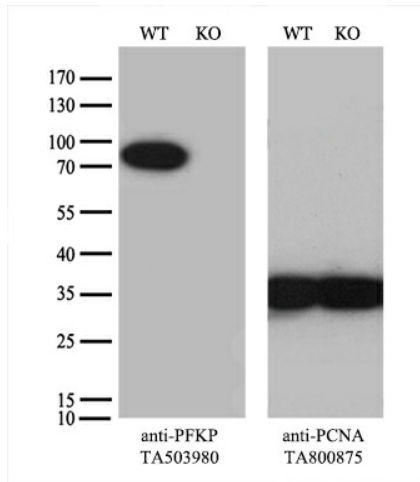
**Product images:**



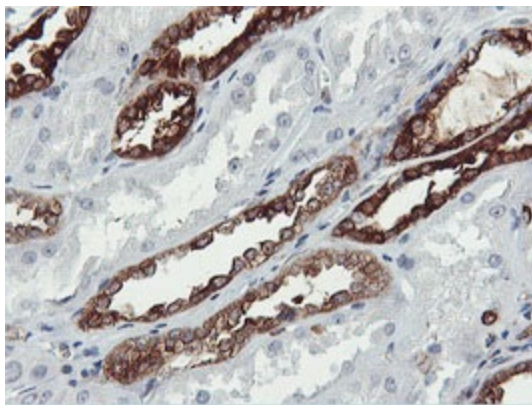
HEK293T cells were transfected with the pCMV6-ENTRY control (Left lane) or pCMV6-ENTRY PFKP ([RC200673], Right lane) cDNA for 48 hrs and lysed. Equivalent amounts of cell lysates (5 ug per lane) were separated by SDS-PAGE and immunoblotted with anti-PFKP. Positive lysates [LY400932] (100ug) and [LC400932] (20ug) can be purchased separately from OriGene.



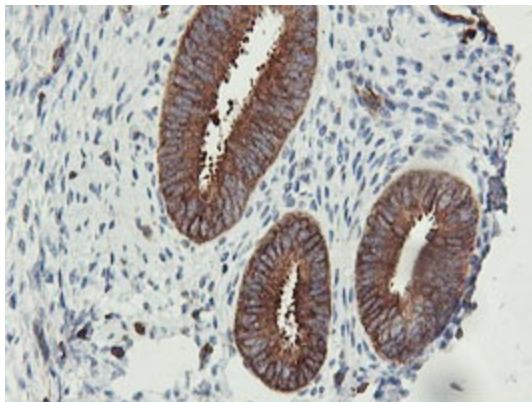
Western blot analysis of extracts (35ug) from 9 different cell lines by using anti-PFKP monoclonal antibody.



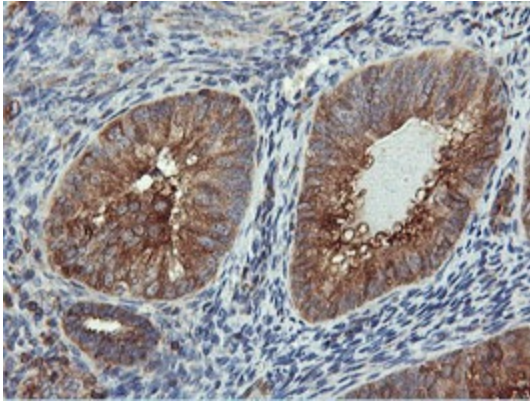
Equivalent amounts of cell lysates (10 ug per lane) of wild-type HeLa cells (WT, Cat# LC810HELA) and PFKP-Knockout HeLa cells (KO, Cat# [LC831752]) were separated by SDS-PAGE and immunoblotted with anti-PFKP monoclonal antibody TA503980 (1:500). Then the blotted membrane was stripped and reprobed with anti-PCNA antibody as a loading control.



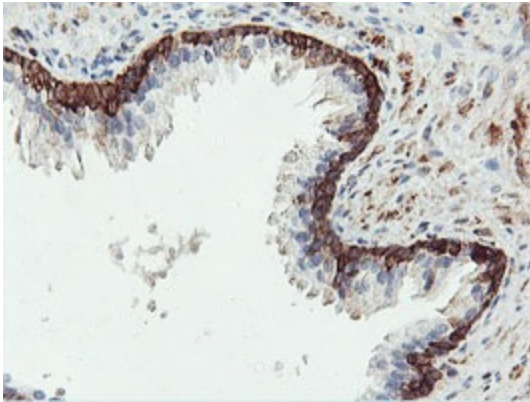
Immunohistochemical staining of paraffin-embedded Human Kidney tissue within the normal limits using anti-PFKP mouse monoclonal antibody. (Heat-induced epitope retrieval by 10mM citric buffer, pH6.0, 100°C for 10min, TA503980)



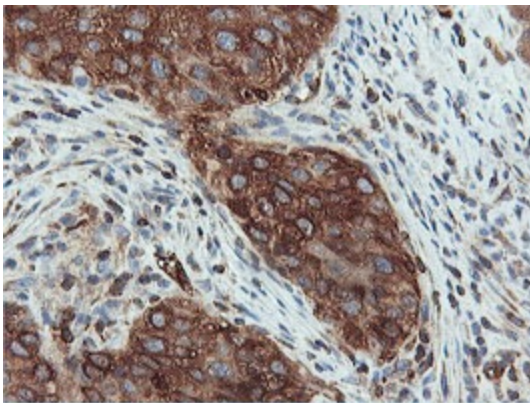
Immunohistochemical staining of paraffin-embedded Human endometrium tissue within the normal limits using anti-PFKP mouse monoclonal antibody. (Heat-induced epitope retrieval by 10mM citric buffer, pH6.0, 100°C for 10min, TA503980)



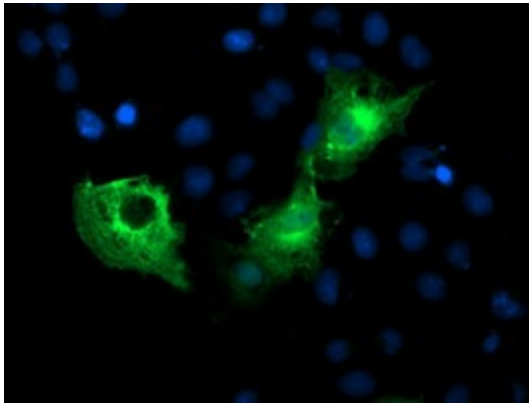
Immunohistochemical staining of paraffin-embedded Adenocarcinoma of Human endometrium tissue using anti-PFKP mouse monoclonal antibody. (Heat-induced epitope retrieval by 10mM citric buffer, pH6.0, 100°C for 10min, TA503980)



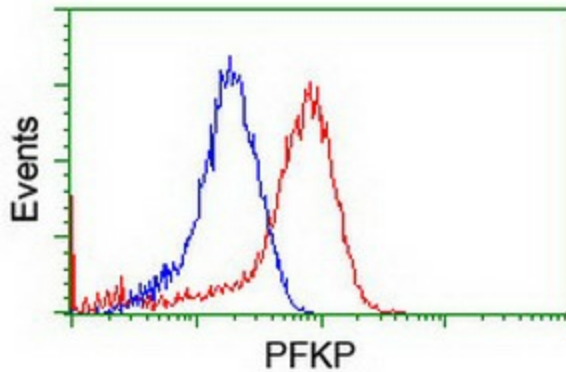
Immunohistochemical staining of paraffin-embedded Human prostate tissue within the normal limits using anti-PFKP mouse monoclonal antibody. (Heat-induced epitope retrieval by 10mM citric buffer, pH6.0, 100°C for 10min, TA503980)



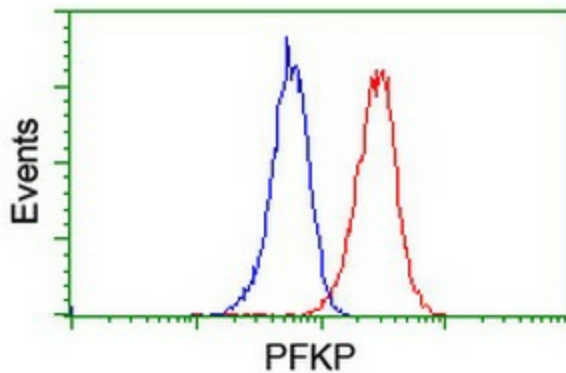
Immunohistochemical staining of paraffin-embedded Carcinoma of Human bladder tissue using anti-PFKP mouse monoclonal antibody. (Heat-induced epitope retrieval by 10mM citric buffer, pH6.0, 100°C for 10min, TA503980)



Anti-PFKP mouse monoclonal antibody (TA503980) immunofluorescent staining of COS7 cells transiently transfected by pCMV6-ENTRY PFKP ([RC200673]).



Flow cytometric Analysis of HeLa cells, using anti-PFKP antibody (TA503980), (Red), compared to a nonspecific negative control antibody, (Blue).



Flow cytometric Analysis of Jurkat cells, using anti-PFKP antibody (TA503980), (Red), compared to a nonspecific negative control antibody, (Blue).