

Product datasheet for **TA503975M**

PDSS2 Mouse Monoclonal Antibody [Clone ID: OTI1C4]

Product data:

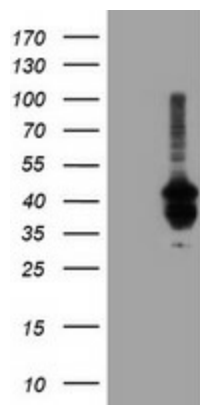
Product Type:	Primary Antibodies
Clone Name:	OTI1C4
Applications:	IF, WB
Recommended Dilution:	WB 1:2000, IF 1:100
Reactivity:	Human, Mouse, Rat
Host:	Mouse
Isotype:	IgG2b
Clonality:	Monoclonal
Immunogen:	Full length human recombinant protein of human PDSS2(NP_065114) produced in HEK293T cell.
Formulation:	PBS (pH 7.3) containing 1% BSA, 50% glycerol and 0.02% sodium azide.
Concentration:	1 mg/ml
Purification:	Purified from mouse ascites fluids or tissue culture supernatant by affinity chromatography (protein A/G)
Conjugation:	Unconjugated
Storage:	Store at -20°C as received.
Stability:	Stable for 12 months from date of receipt.
Predicted Protein Size:	43.9 kDa
Gene Name:	decaprenyl diphosphate synthase subunit 2
Database Link:	NP_065114 Entrez Gene 71365 Mouse Entrez Gene 365592 Rat Entrez Gene 57107 Human Q86YH6
Background:	The protein encoded by this gene is an enzyme that synthesizes the prenyl side-chain of coenzyme Q, or ubiquinone, one of the key elements in the respiratory chain. The gene product catalyzes the formation of all trans-polyprenyl pyrophosphates from isopentyl diphosphate in the assembly of polyisoprenoid side chains, the first step in coenzyme Q biosynthesis. Defects in this gene are a cause of coenzyme Q10 deficiency. COMPLETENESS: complete on the 3' end.


[View online »](#)

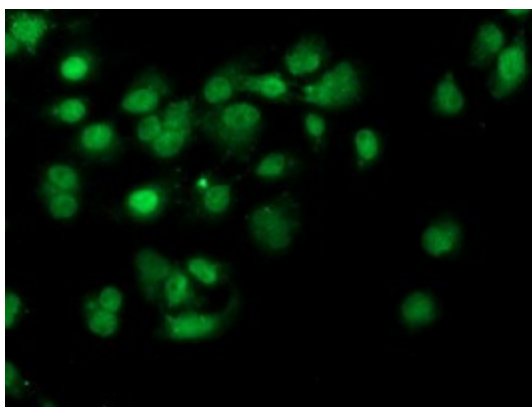
Synonyms: bA59I9.3; C6orf210; COQ10D3; DLP1; hDLP1

Protein Pathways: Terpenoid backbone biosynthesis

Product images:



HEK293T cells were transfected with the pCMV6-ENTRY control (Left lane) or pCMV6-ENTRY PDSS2 ([RC207892], Right lane) cDNA for 48 hrs and lysed. Equivalent amounts of cell lysates (5 ug per lane) were separated by SDS-PAGE and immunoblotted with anti-PDSS2. Positive lysates [LY412512] (100ug) and [LC412512] (20ug) can be purchased separately from OriGene.



Anti-PDSS2 mouse monoclonal antibody ([TA503975]) immunofluorescent staining of COS7 cells transiently transfected by pCMV6-ENTRY PDSS2 ([RC207892]).