

Product datasheet for **TA503970S**

Kv beta 1 (KCNAB1) Mouse Monoclonal Antibody [Clone ID: OTI2F1]

Product data:

Product Type:	Primary Antibodies
Clone Name:	OTI2F1
Applications:	FC, IF, WB
Recommended Dilution:	WB 1:1000, IF 1:100, FLOW 1:100
Reactivity:	Human, Mouse, Rat
Host:	Mouse
Isotype:	IgG1
Clonality:	Monoclonal
Immunogen:	Full length human recombinant protein of KCNAB1(NP_751891) produced in HEK293T cell.
Formulation:	PBS (pH 7.3) containing 1% BSA, 50% glycerol and 0.02% sodium azide.
Concentration:	0.96 mg/ml
Purification:	Purified from mouse ascites fluids or tissue culture supernatant by affinity chromatography (protein A/G)
Conjugation:	Unconjugated
Storage:	Store at -20°C as received.
Stability:	Stable for 12 months from date of receipt.
Predicted Protein Size:	44.5 kDa
Gene Name:	potassium voltage-gated channel subfamily A regulatory beta subunit 1
Database Link:	NP_751891 Entrez Gene 16497 Mouse Entrez Gene 29737 Rat Entrez Gene 7881 Human Q14722



[View online »](#)

Background:

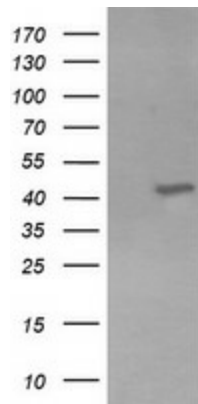
Potassium channels represent the most complex class of voltage-gated ion channels from both functional and structural standpoints. Their diverse functions include regulating neurotransmitter release, heart rate, insulin secretion, neuronal excitability, epithelial electrolyte transport, smooth muscle contraction, and cell volume. Four sequence-related potassium channel genes - shaker, shaw, shab, and shal - have been identified in *Drosophila*, and each has been shown to have human homolog(s). This gene encodes a member of the potassium channel, voltage-gated, shaker-related subfamily. This member includes three distinct isoforms which are encoded by three alternatively spliced transcript variants of this gene. These three isoforms are beta subunits, which form heteromultimeric complex with alpha subunits and modulate the activity of the pore-forming alpha subunits. [provided by RefSeq, Jul 2008]

Synonyms:

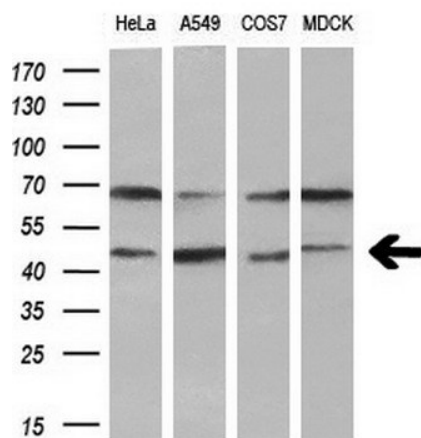
AKR6A3; hKvb3; hKvBeta3; KCNA1B; KV-BETA-1; Kvb1.3

Protein Families:

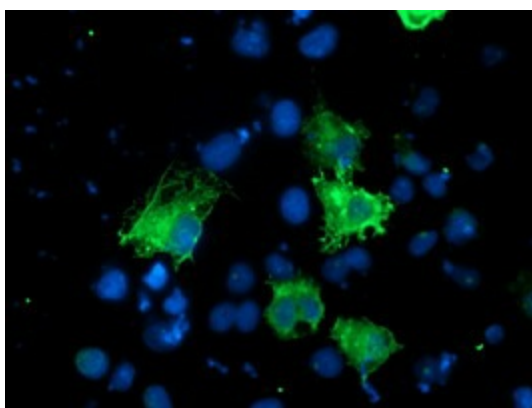
Druggable Genome, Ion Channels: Other

Product images:


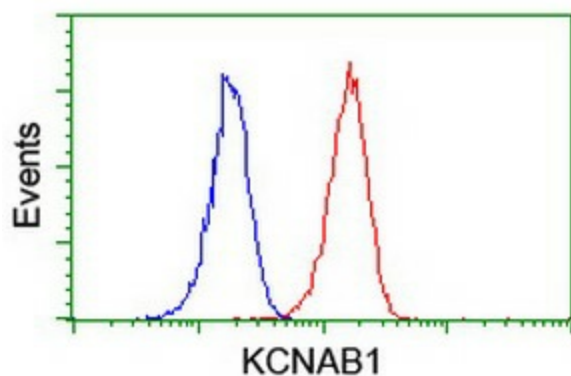
HEK293T cells were transfected with the pCMV6-ENTRY control (Left lane) or pCMV6-ENTRY KCNAB1 ([RC207384], Right lane) cDNA for 48 hrs and lysed. Equivalent amounts of cell lysates (5 ug per lane) were separated by SDS-PAGE and immunoblotted with anti-KCNAB1. Positive lysates [LY403531] (100ug) and [LC403531] (20ug) can be purchased separately from OriGene.



Western blot analysis of extracts (10ug) from 4 different cell lines by using anti-KCNAB1 monoclonal antibody (1:200).



Anti-KCNAB1 mouse monoclonal antibody ([TA503970]) immunofluorescent staining of COS7 cells transiently transfected by pCMV6-ENTRY KCNAB1 ([RC207384]).



Flow cytometric Analysis of Jurkat cells, using anti-KCNAB1 antibody ([TA503970]), (Red), compared to a nonspecific negative control antibody, (Blue).