

## Product datasheet for **TA503958AM**

### HES1 Mouse Monoclonal Antibody (Biotin conjugated) [Clone ID: OTI1H8]

#### Product data:

Product Type:	Primary Antibodies
Clone Name:	OTI1H8
Applications:	FC, IF, WB
Recommended Dilution:	WB 1:2000, IF 1:100, FLOW 1:100
Reactivity:	Human, Mouse, Rat
Host:	Mouse
Isotype:	IgG1
Clonality:	Monoclonal
Immunogen:	Full length human recombinant protein of human HES1(NP_005515) produced in HEK293T cell.
Formulation:	PBS (pH 7.3) containing 1% BSA, 50% glycerol and 0.02% sodium azide.
Concentration:	0.5 mg/ml
Purification:	Purified from mouse ascites fluids or tissue culture supernatant by affinity chromatography (protein A/G)
Conjugation:	Biotin
Storage:	Store at -20°C as received.
Stability:	Stable for 12 months from date of receipt.
Predicted Protein Size:	29.4 kDa
Gene Name:	hes family bHLH transcription factor 1
Database Link:	<a href="#">NP_005515</a> <a href="#">Entrez Gene 15205 Mouse</a> <a href="#">Entrez Gene 29577 Rat</a> <a href="#">Entrez Gene 3280 Human</a> <a href="#">Q14469</a>
Background:	This protein belongs to the basic helix-loop-helix family of transcription factors. It is a transcriptional repressor of genes that require a bHLH protein for their transcription. The protein has a particular type of basic domain that contains a helix interrupting protein that binds to the N-box rather than the canonical E-box. [provided by RefSeq]
Synonyms:	bHLHb39; HES-1; HHL; HRY

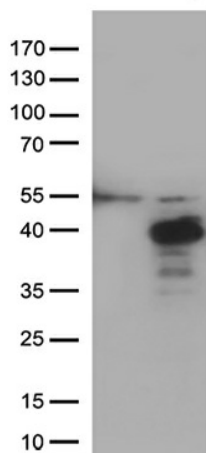


[View online »](#)

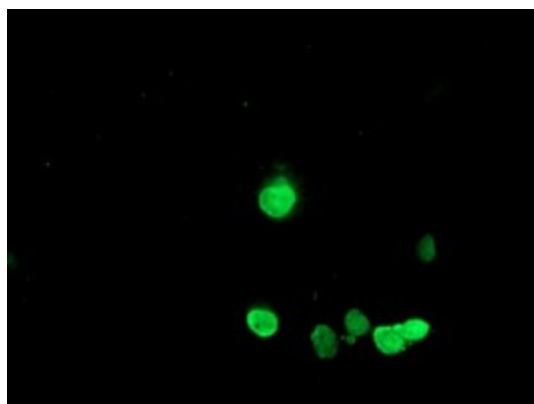
**Protein Families:** Adult stem cells, Cancer stem cells, Druggable Genome, ES Cell Differentiation/IPS, Stem cell relevant signaling - DSL/Notch pathway, Transcription Factors

**Protein Pathways:** Maturity onset diabetes of the young, Notch signaling pathway

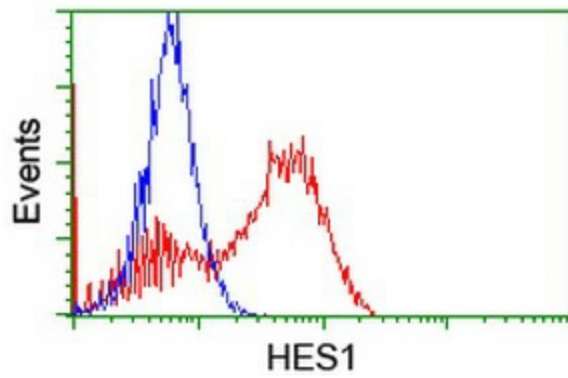
**Product images:**



HEK293T cells were transfected with the pCMV6-ENTRY control (Left lane) or pCMV6-ENTRY HES1 ([RC211709], Right lane) cDNA for 48 hrs and lysed. Equivalent amounts of cell lysates (5 ug per lane) were separated by SDS-PAGE and immunoblotted with anti-HES1 (1:500).



Anti-HES1 mouse monoclonal antibody ([TA503958]) immunofluorescent staining of COS7 cells transiently transfected by pCMV6-ENTRY HES1 ([RC211709]).



HEK293T cells transfected with either [RC211709] overexpress plasmid (Red) or empty vector control plasmid (Blue) were immunostained by anti-HES1 antibody ([TA503958]), and then analyzed by flow cytometry.