

## Product datasheet for **TA503949BM**

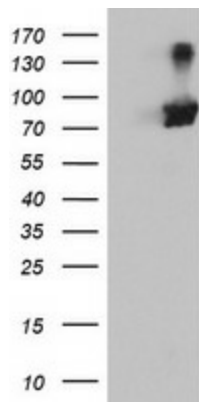
### **RNPEP Mouse Monoclonal Antibody (HRP conjugated) [Clone ID: OTI2G3]**

#### **Product data:**

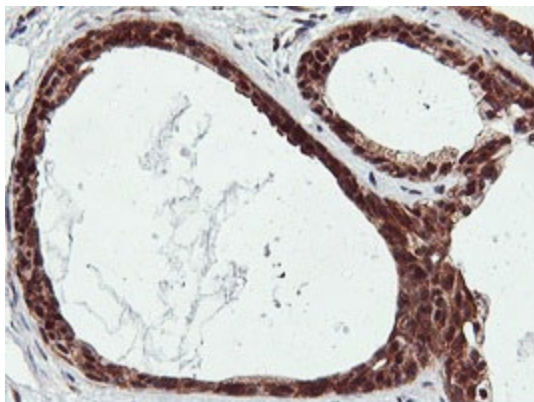
Product Type:	Primary Antibodies
Clone Name:	OTI2G3
Applications:	FC, IHC, WB
Recommended Dilution:	WB 1:2000, IHC 1:150, FLOW 1:100
Reactivity:	Human, Mouse, Rat
Host:	Mouse
Isotype:	IgG1
Clonality:	Monoclonal
Immunogen:	Full length human recombinant protein of human RNPEP(NP_064601) produced in HEK293T cell.
Formulation:	PBS (pH 7.3) containing 1% BSA, 50% glycerol.
Concentration:	0.5 mg/ml
Purification:	Purified from mouse ascites fluids or tissue culture supernatant by affinity chromatography (protein A/G)
Conjugation:	HRP
Storage:	Store at -20°C as received.
Stability:	Stable for 12 months from date of receipt.
Predicted Protein Size:	72.4 kDa
Gene Name:	arginyl aminopeptidase
Database Link:	<a href="#">NP_064601</a> <a href="#">Entrez Gene 215615 Mouse</a> <a href="#">Entrez Gene 6051 Human</a> <a href="#">Q9H4A4</a>
Synonyms:	DKFZp547H084
Protein Families:	Druggable Genome, Protease, Secreted Protein



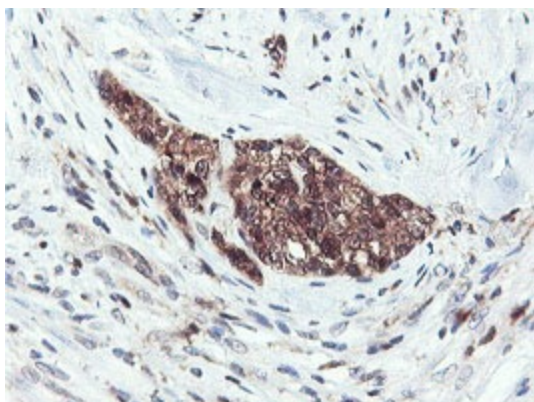
[View online »](#)

**Product images:**

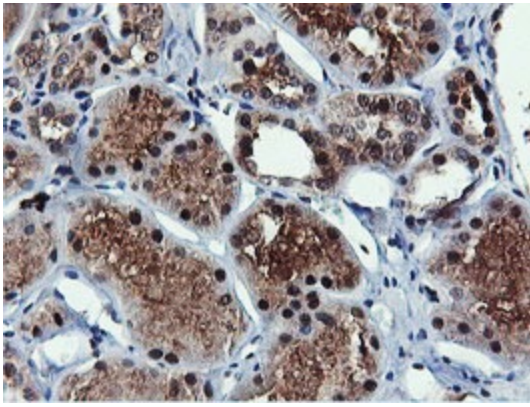
HEK293T cells were transfected with the pCMV6-ENTRY control (Left lane) or pCMV6-ENTRY RNPEP ([RC200756], Right lane) cDNA for 48 hrs and lysed. Equivalent amounts of cell lysates (5 ug per lane) were separated by SDS-PAGE and immunoblotted with anti-RNPEP. Positive lysates [LY412581] (100ug) and [LC412581] (20ug) can be purchased separately from OriGene.



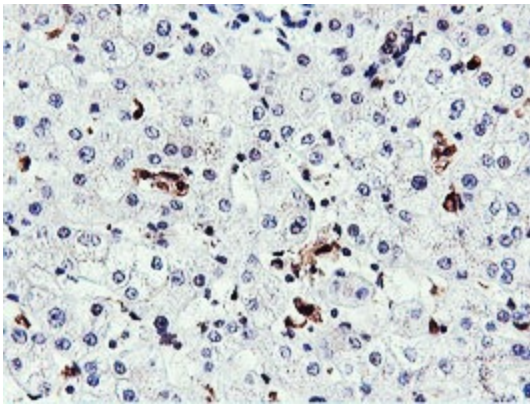
Immunohistochemical staining of paraffin-embedded Human breast tissue within the normal limits using anti-RNPEP mouse monoclonal antibody. (Heat-induced epitope retrieval by 10mM citric buffer, pH6.0, 100°C for 10min, [TA503949])



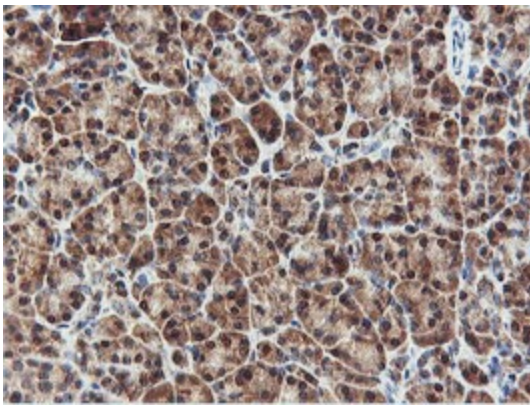
Immunohistochemical staining of paraffin-embedded Adenocarcinoma of Human breast tissue using anti-RNPEP mouse monoclonal antibody. (Heat-induced epitope retrieval by 10mM citric buffer, pH6.0, 100°C for 10min, [TA503949])



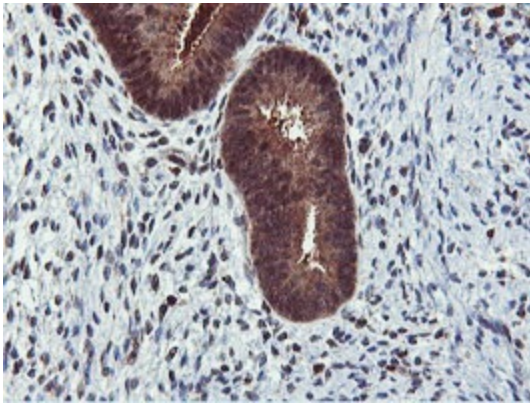
Immunohistochemical staining of paraffin-embedded Human Kidney tissue within the normal limits using anti-RNPEP mouse monoclonal antibody. (Heat-induced epitope retrieval by 10mM citric buffer, pH6.0, 100°C for 10min, [TA503949])



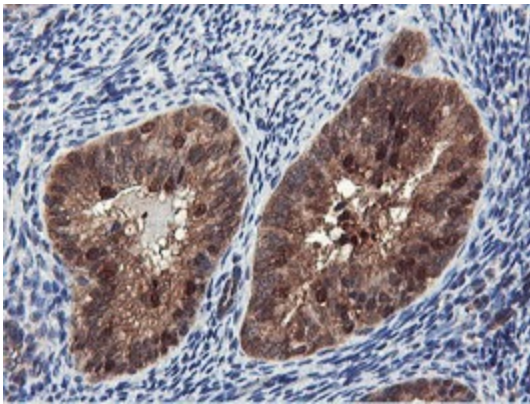
Immunohistochemical staining of paraffin-embedded Human liver tissue within the normal limits using anti-RNPEP mouse monoclonal antibody. (Heat-induced epitope retrieval by 10mM citric buffer, pH6.0, 100°C for 10min, [TA503949])



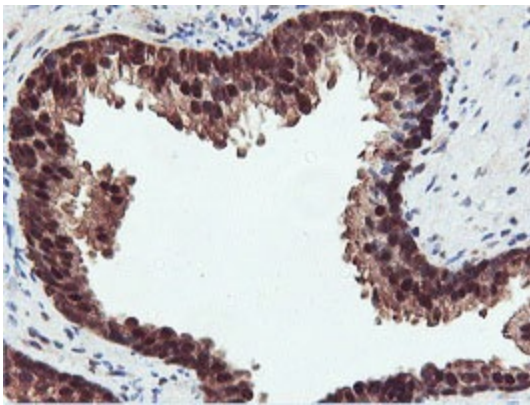
Immunohistochemical staining of paraffin-embedded Human pancreas tissue within the normal limits using anti-RNPEP mouse monoclonal antibody. (Heat-induced epitope retrieval by 10mM citric buffer, pH6.0, 100°C for 10min, [TA503949])



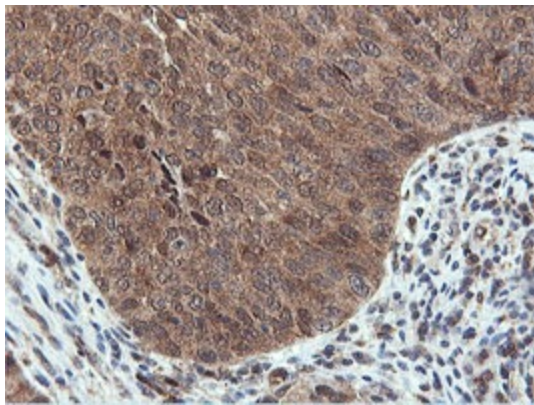
Immunohistochemical staining of paraffin-embedded Human endometrium tissue within the normal limits using anti-RNPEP mouse monoclonal antibody. (Heat-induced epitope retrieval by 10mM citric buffer, pH6.0, 100°C for 10min, [TA503949])



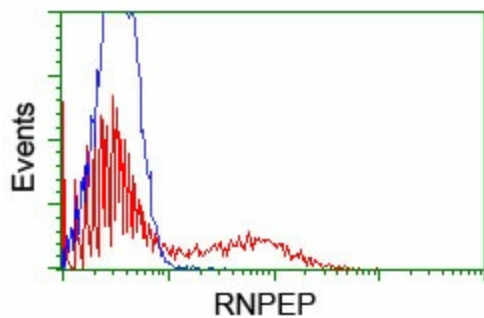
Immunohistochemical staining of paraffin-embedded Adenocarcinoma of Human endometrium tissue using anti-RNPEP mouse monoclonal antibody. (Heat-induced epitope retrieval by 10mM citric buffer, pH6.0, 100°C for 10min, [TA503949])



Immunohistochemical staining of paraffin-embedded Human prostate tissue within the normal limits using anti-RNPEP mouse monoclonal antibody. (Heat-induced epitope retrieval by 10mM citric buffer, pH6.0, 100°C for 10min, [TA503949])



Immunohistochemical staining of paraffin-embedded Carcinoma of Human bladder tissue using anti-RNPEP mouse monoclonal antibody. (Heat-induced epitope retrieval by 10mM citric buffer, pH6.0, 100°C for 10min, [TA503949])



HEK293T cells transfected with either [RC200756] overexpress plasmid (Red) or empty vector control plasmid (Blue) were immunostained by anti-RNPEP antibody ([TA503949]), and then analyzed by flow cytometry.