

## Product datasheet for **TA503946**

### **RGS16 Mouse Monoclonal Antibody [Clone ID: OT11H7]**

#### **Product data:**

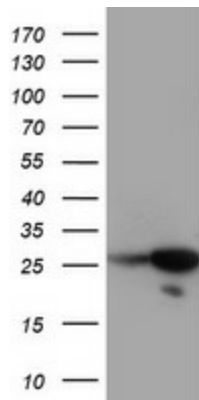
<b>Product Type:</b>	Primary Antibodies
<b>Clone Name:</b>	OT11H7
<b>Applications:</b>	FC, WB
<b>Recommended Dilution:</b>	WB 1:2000, FLOW 1:100
<b>Reactivity:</b>	Human, Mouse, Rat
<b>Host:</b>	Mouse
<b>Isotype:</b>	IgG1
<b>Clonality:</b>	Monoclonal
<b>Immunogen:</b>	Full length human recombinant protein of human RGS16(NP_002919) produced in HEK293T cell.
<b>Formulation:</b>	PBS (pH 7.3) containing 1% BSA, 50% glycerol and 0.02% sodium azide.
<b>Concentration:</b>	0.56 mg/ml
<b>Purification:</b>	Purified from mouse ascites fluids or tissue culture supernatant by affinity chromatography (protein A/G)
<b>Conjugation:</b>	Unconjugated
<b>Storage:</b>	Store at -20°C as received.
<b>Stability:</b>	Stable for 12 months from date of receipt.
<b>Predicted Protein Size:</b>	22.6 kDa
<b>Gene Name:</b>	regulator of G protein signaling 16
<b>Database Link:</b>	<a href="#">NP_002919</a> <a href="#">Entrez Gene 19734 Mouse</a> <a href="#">Entrez Gene 360857 Rat</a> <a href="#">Entrez Gene 6004 Human</a> <a href="#">O15492</a>
<b>Background:</b>	The protein encoded by this gene belongs to the 'regulator of G protein signaling' family. It inhibits signal transduction by increasing the GTPase activity of G protein alpha subunits. It also may play a role in regulating the kinetics of signaling in the phototransduction cascade. [provided by RefSeq]
<b>Synonyms:</b>	A28-RGS14; A28-RGS14P; RGS-R



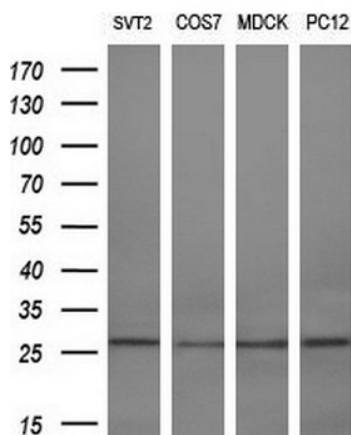
[View online »](#)

Protein Families: Druggable Genome

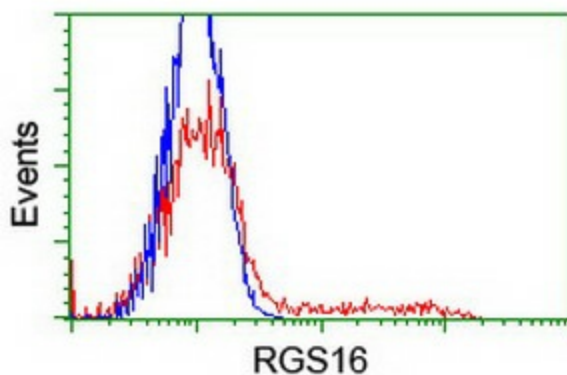
**Product images:**



HEK293T cells were transfected with the pCMV6-ENTRY control (Left lane) or pCMV6-ENTRY RGS16 [RC202430], Right lane) cDNA for 48 hrs and lysed. Equivalent amounts of cell lysates (5 ug per lane) were separated by SDS-PAGE and immunoblotted with anti-RGS16. Positive lysates [LY419009] (100ug) and [LC419009] (20ug) can be purchased separately from OriGene.



Western blot analysis of extracts (10ug) from 4 different cell lines by using anti-RGS16 monoclonal antibody (1:200).



HEK293T cells transfected with either [RC202430] overexpress plasmid (Red) or empty vector control plasmid (Blue) were immunostained by anti-RGS16 antibody (TA503946), and then analyzed by flow cytometry.