

Product datasheet for **TA503945BM**

FBXO31 Mouse Monoclonal Antibody (HRP conjugated) [Clone ID: OTI1H1]

Product data:

Product Type:	Primary Antibodies
Clone Name:	OTI1H1
Applications:	FC, IF, WB
Recommended Dilution:	WB 1:2000, IF 1:100, FLOW 1:100
Reactivity:	Human, Mouse, Rat
Host:	Mouse
Isotype:	IgG2b
Clonality:	Monoclonal
Immunogen:	Full length human recombinant protein of human FBXO31(NP_079011) produced in HEK293T cell.
Formulation:	PBS (pH 7.3) containing 1% BSA, 50% glycerol.
Concentration:	0.5 mg/ml
Purification:	Purified from mouse ascites fluids or tissue culture supernatant by affinity chromatography (protein A/G)
Conjugation:	HRP
Storage:	Store at -20°C as received.
Stability:	Stable for 12 months from date of receipt.
Predicted Protein Size:	60.5 kDa
Gene Name:	F-box protein 31
Database Link:	NP_079011 Entrez Gene 76454 Mouse Entrez Gene 498959 Rat Entrez Gene 79791 Human Q5XUX0
Background:	Members of the F-box protein family, such as FBXO31, are characterized by an approximately 40-amino acid F-box motif. SCF complexes, formed by SKP1 (MIM 601434), cullin (see CUL1; MIM 603134), and F-box proteins, act as protein-ubiquitin ligases. F-box proteins interact with SKP1 through the F box, and they interact with ubiquitination targets through other protein interaction domains (Jin et al., 2004 [PubMed 15520277]). [supplied by OMIM, Mar 2008]

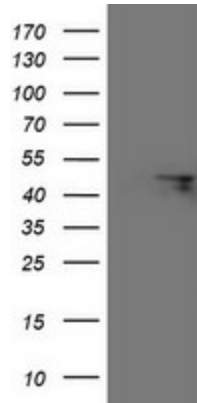


[View online »](#)

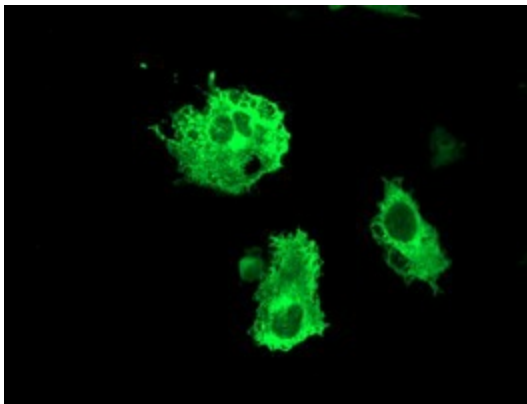
Synonyms: FBX14; Fbx31; FBXO14; MRT45; pp2386

Protein Families: Druggable Genome

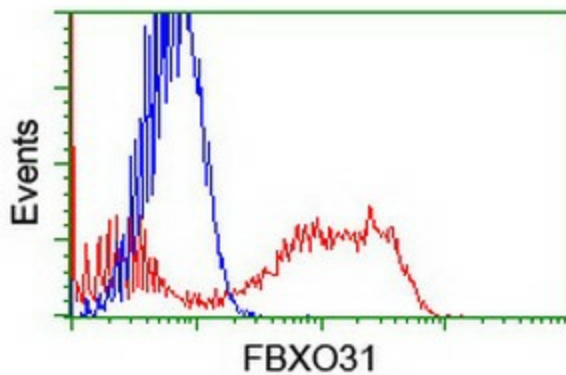
Product images:



HEK293T cells were transfected with the pCMV6-ENTRY control (Cat# [PS100001], Left lane) or pCMV6-ENTRY FBXO31 (Cat# [RC203518], Right lane) cDNA for 48 hrs and lysed. Equivalent amounts of cell lysates (5 ug per lane) were separated by SDS-PAGE and immunoblotted with anti-FBXO31 (Cat# [TA503945]). Positive lysates [LY411131] (100ug) and [LC411131] (20ug) can be purchased separately from OriGene.



Anti-FBXO31 mouse monoclonal antibody ([TA503945]) immunofluorescent staining of COS7 cells transiently transfected by pCMV6-ENTRY FBXO31 ([RC203518]).



HEK293T cells transfected with either [RC203518] overexpress plasmid (Red) or empty vector control plasmid (Blue) were immunostained by anti-FBXO31 antibody ([TA503945]), and then analyzed by flow cytometry.