

## Product datasheet for **TA503945AM**

### **FBXO31 Mouse Monoclonal Antibody (Biotin conjugated) [Clone ID: OTI1H1]**

#### **Product data:**

<b>Product Type:</b>	Primary Antibodies
<b>Clone Name:</b>	OTI1H1
<b>Applications:</b>	FC, IF, WB
<b>Recommended Dilution:</b>	WB 1:2000, IF 1:100, FLOW 1:100
<b>Reactivity:</b>	Human, Mouse, Rat
<b>Host:</b>	Mouse
<b>Isotype:</b>	IgG2b
<b>Clonality:</b>	Monoclonal
<b>Immunogen:</b>	Full length human recombinant protein of human FBXO31(NP_079011) produced in HEK293T cell.
<b>Formulation:</b>	PBS (pH 7.3) containing 1% BSA, 50% glycerol and 0.02% sodium azide.
<b>Concentration:</b>	0.5 mg/ml
<b>Purification:</b>	Purified from mouse ascites fluids or tissue culture supernatant by affinity chromatography (protein A/G)
<b>Conjugation:</b>	Biotin
<b>Storage:</b>	Store at -20°C as received.
<b>Stability:</b>	Stable for 12 months from date of receipt.
<b>Predicted Protein Size:</b>	60.5 kDa
<b>Gene Name:</b>	F-box protein 31
<b>Database Link:</b>	<a href="#">NP_079011</a> <a href="#">Entrez Gene 76454 Mouse</a> <a href="#">Entrez Gene 498959 Rat</a> <a href="#">Entrez Gene 79791 Human</a> <a href="#">Q5XUX0</a>
<b>Background:</b>	Members of the F-box protein family, such as FBXO31, are characterized by an approximately 40-amino acid F-box motif. SCF complexes, formed by SKP1 (MIM 601434), cullin (see CUL1; MIM 603134), and F-box proteins, act as protein-ubiquitin ligases. F-box proteins interact with SKP1 through the F box, and they interact with ubiquitination targets through other protein interaction domains (Jin et al., 2004 [PubMed 15520277]). [supplied by OMIM, Mar 2008]

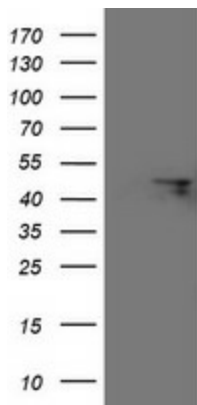


[View online »](#)

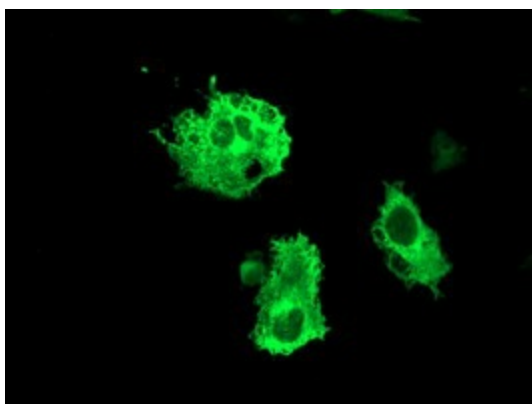
**Synonyms:** FBX14; Fbx31; FBXO14; MRT45; pp2386

**Protein Families:** Druggable Genome

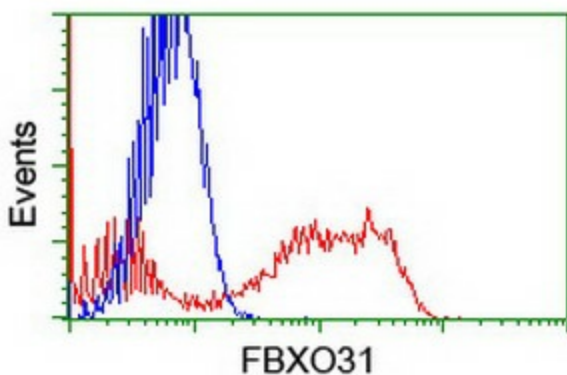
**Product images:**



HEK293T cells were transfected with the pCMV6-ENTRY control (Cat# [PS100001], Left lane) or pCMV6-ENTRY FBXO31 (Cat# [RC203518], Right lane) cDNA for 48 hrs and lysed. Equivalent amounts of cell lysates (5 ug per lane) were separated by SDS-PAGE and immunoblotted with anti-FBXO31 (Cat# [TA503945]). Positive lysates [LY411131] (100ug) and [LC411131] (20ug) can be purchased separately from OriGene.



Anti-FBXO31 mouse monoclonal antibody ([TA503945]) immunofluorescent staining of COS7 cells transiently transfected by pCMV6-ENTRY FBXO31 ([RC203518]).



HEK293T cells transfected with either [RC203518] overexpress plasmid (Red) or empty vector control plasmid (Blue) were immunostained by anti-FBXO31 antibody ([TA503945]), and then analyzed by flow cytometry.