

## Product datasheet for **TA503944BM**

### **DUSP23 Mouse Monoclonal Antibody (HRP conjugated) [Clone ID: OTI3C10]**

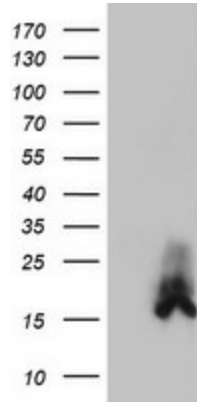
#### **Product data:**

<b>Product Type:</b>	Primary Antibodies
<b>Clone Name:</b>	OTI3C10
<b>Applications:</b>	FC, IF, IHC, WB
<b>Recommended Dilution:</b>	WB 1:2000, IHC 1:150, IF 1:100, FLOW 1:100
<b>Reactivity:</b>	Human, Mouse, Rat
<b>Host:</b>	Mouse
<b>Isotype:</b>	IgG2a
<b>Clonality:</b>	Monoclonal
<b>Immunogen:</b>	Full length human recombinant protein of human DUSP23(NP_060293) produced in HEK293T cell.
<b>Formulation:</b>	PBS (pH 7.3) containing 1% BSA, 50% glycerol.
<b>Concentration:</b>	0.5 mg/ml
<b>Purification:</b>	Purified from mouse ascites fluids or tissue culture supernatant by affinity chromatography (protein A/G)
<b>Conjugation:</b>	HRP
<b>Storage:</b>	Store at -20°C as received.
<b>Stability:</b>	Stable for 12 months from date of receipt.
<b>Predicted Protein Size:</b>	16.4 kDa
<b>Gene Name:</b>	dual specificity phosphatase 23
<b>Database Link:</b>	<a href="#">NP_060293</a> <a href="#">Entrez Gene 54935 Human</a> <a href="#">Q9BVJ7</a>
<b>Synonyms:</b>	DUSP25; LDP-3; MOSP; VHZ
<b>Protein Families:</b>	Druggable Genome, Phosphatase

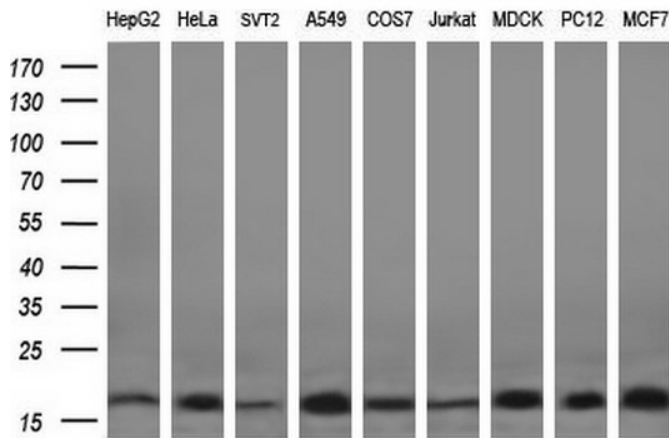


[View online »](#)

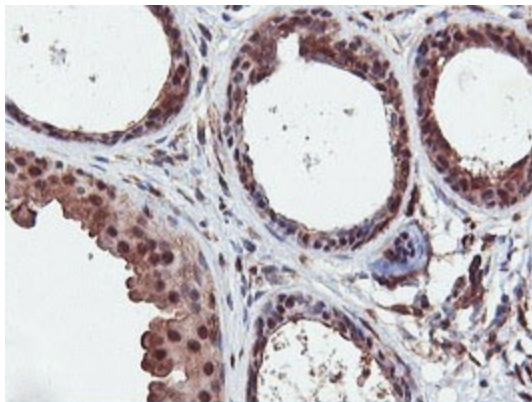
**Product images:**



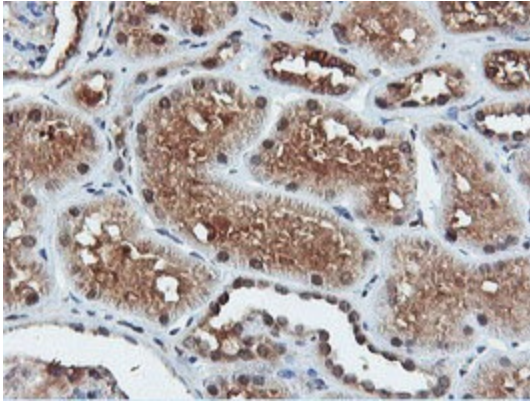
HEK293T cells were transfected with the pCMV6-ENTRY control (Cat# [PS100001], Left lane) or pCMV6-ENTRY DUSP23 (Cat# [RC200171], Right lane) cDNA for 48 hrs and lysed. Equivalent amounts of cell lysates (5 ug per lane) were separated by SDS-PAGE and immunoblotted with anti-DUSP23(Cat# [TA503944]). Positive lysates [LY402621] (100ug) and [LC402621] (20ug) can be purchased separately from OriGene.



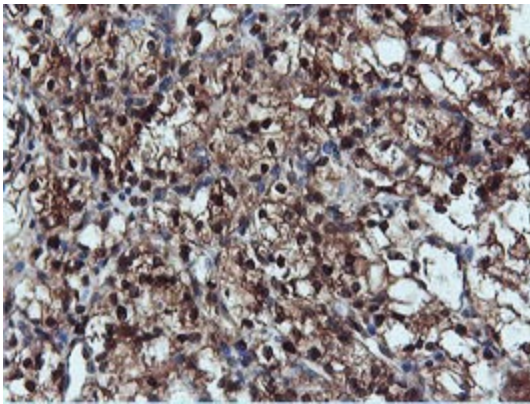
Western blot analysis of extracts (35ug) from 9 different cell lines by using anti-DUSP23 monoclonal antibody (HepG2: human; HeLa: human; SVT2: mouse; A549: human; COS7: monkey; Jurkat: human; MDCK: canine; PC12: rat; MCF7: human) (1:200).



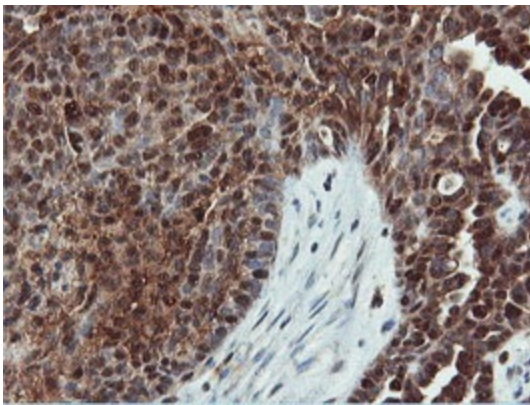
Immunohistochemical staining of paraffin-embedded Human breast tissue within the normal limits using anti-DUSP23 mouse monoclonal antibody. (Heat-induced epitope retrieval by 10mM citric buffer, pH6.0, 100°C for 10min, [TA503944])



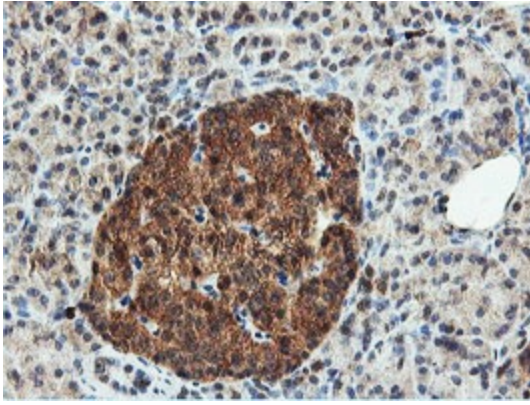
Immunohistochemical staining of paraffin-embedded Human Kidney tissue within the normal limits using anti-DUSP23 mouse monoclonal antibody. (Heat-induced epitope retrieval by 10mM citric buffer, pH6.0, 100°C for 10min, [TA503944])



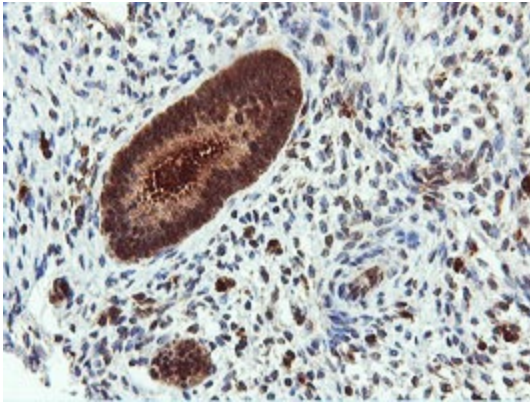
Immunohistochemical staining of paraffin-embedded Carcinoma of Human kidney tissue using anti-DUSP23 mouse monoclonal antibody. (Heat-induced epitope retrieval by 10mM citric buffer, pH6.0, 100°C for 10min, [TA503944])



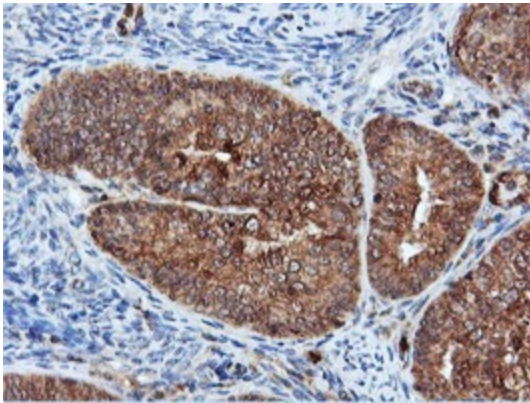
Immunohistochemical staining of paraffin-embedded Adenocarcinoma of Human ovary tissue using anti-DUSP23 mouse monoclonal antibody. (Heat-induced epitope retrieval by 10mM citric buffer, pH6.0, 100°C for 10min, [TA503944])



Immunohistochemical staining of paraffin-embedded Human pancreas tissue within the normal limits using anti-DUSP23 mouse monoclonal antibody. (Heat-induced epitope retrieval by 10mM citric buffer, pH6.0, 100°C for 10min, [TA503944])

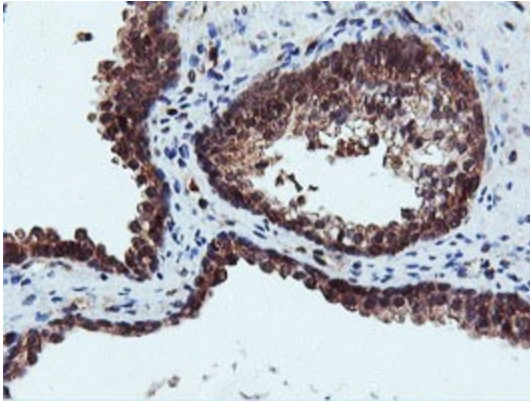


Immunohistochemical staining of paraffin-embedded Human endometrium tissue within the normal limits using anti-DUSP23 mouse monoclonal antibody. (Heat-induced epitope retrieval by 10mM citric buffer, pH6.0, 100°C for 10min, [TA503944])

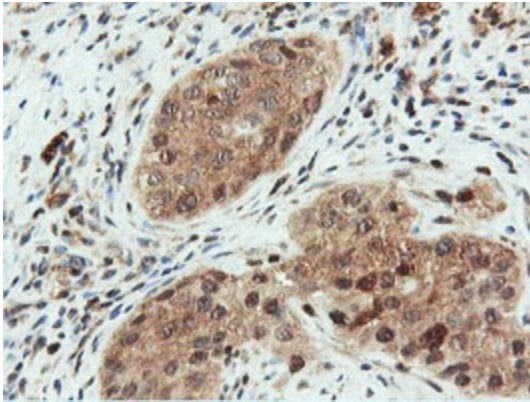


Immunohistochemical staining of paraffin-embedded Adenocarcinoma of Human endometrium tissue using anti-DUSP23 mouse monoclonal antibody. (Heat-induced epitope retrieval by 10mM citric buffer, pH6.0, 100°C for 10min, [TA503944])

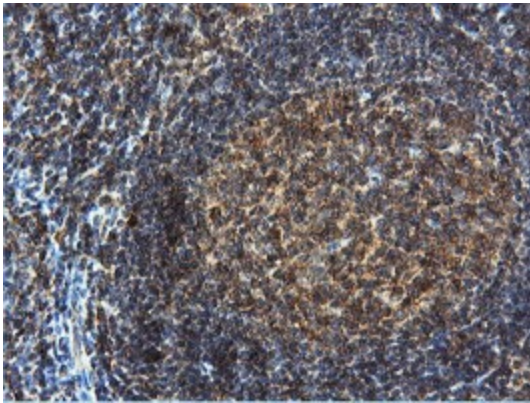




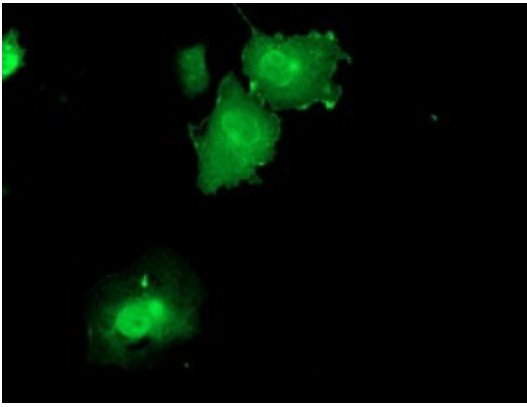
Immunohistochemical staining of paraffin-embedded Human prostate tissue within the normal limits using anti-DUSP23 mouse monoclonal antibody. (Heat-induced epitope retrieval by 10mM citric buffer, pH6.0, 100°C for 10min, [TA503944])



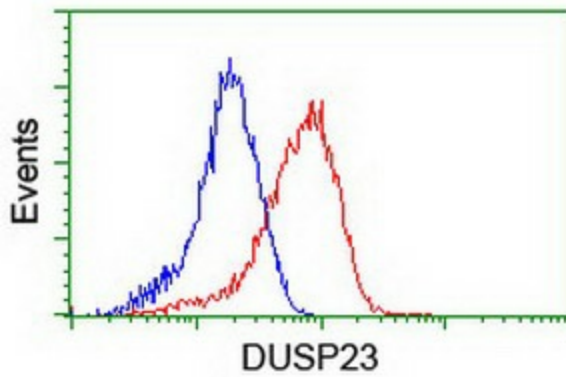
Immunohistochemical staining of paraffin-embedded Carcinoma of Human bladder tissue using anti-DUSP23 mouse monoclonal antibody. (Heat-induced epitope retrieval by 10mM citric buffer, pH6.0, 100°C for 10min, [TA503944])



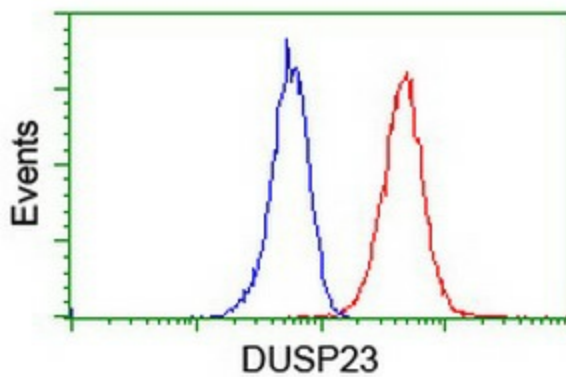
Immunohistochemical staining of paraffin-embedded Human tonsil within the normal limits using anti-DUSP23 mouse monoclonal antibody. (Heat-induced epitope retrieval by 10mM citric buffer, pH6.0, 100°C for 10min, [TA503944])



Anti-DUSP23 mouse monoclonal antibody ([TA503944]) immunofluorescent staining of COS7 cells transiently transfected by pCMV6-ENTRY DUSP23 ([RC200171]).



Flow cytometric Analysis of HeLa cells, using anti-DUSP23 antibody ([TA503944]), (Red), compared to a nonspecific negative control antibody, (Blue).



Flow cytometric Analysis of Jurkat cells, using anti-DUSP23 antibody ([TA503944]), (Red), compared to a nonspecific negative control antibody, (Blue).