

Product datasheet for **TA503932BM**

TUBAL3 Mouse Monoclonal Antibody (HRP conjugated) [Clone ID: OTI3B7]

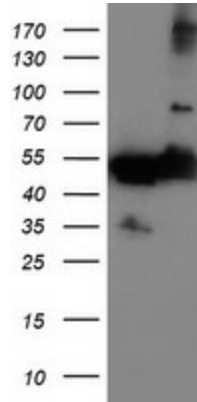
Product data:

Product Type:	Primary Antibodies
Clone Name:	OTI3B7
Applications:	FC, IF, WB
Recommended Dilution:	WB 1:2000, IF 1:100, FLOW 1:100
Reactivity:	Human
Host:	Mouse
Isotype:	IgG2b
Clonality:	Monoclonal
Immunogen:	Human recombinant protein fragment corresponding to amino acids 150-446 of human (NP_079079) produced in E.coli.
Formulation:	PBS (pH 7.3) containing 1% BSA, 50% glycerol.
Concentration:	0.5 mg/ml
Purification:	Purified from mouse ascites fluids or tissue culture supernatant by affinity chromatography (protein A/G)
Conjugation:	HRP
Storage:	Store at -20°C as received.
Stability:	Stable for 12 months from date of receipt.
Predicted Protein Size:	49.7 kDa
Gene Name:	tubulin alpha like 3
Database Link:	NP_079079 Entrez Gene 79861 Human A6NHL2
Synonyms:	FLJ21665; MGC119347; MGC119349
Protein Families:	Druggable Genome
Protein Pathways:	Gap junction, Pathogenic Escherichia coli infection

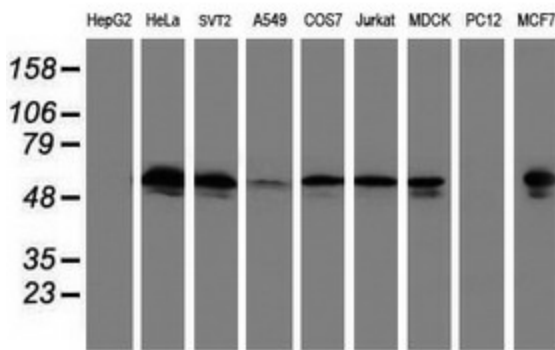


[View online »](#)

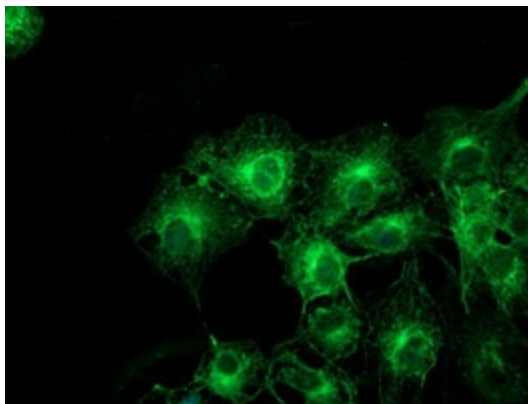
Product images:



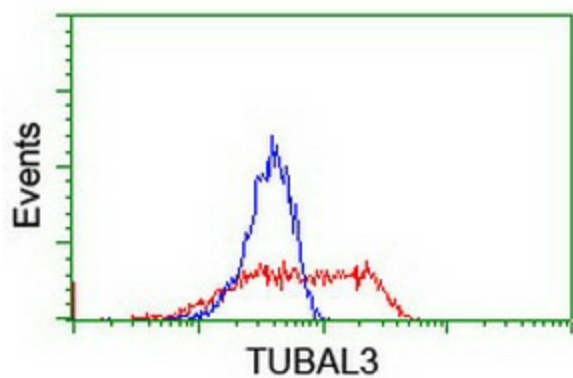
HEK293T cells were transfected with the pCMV6-ENTRY control (Left lane) or pCMV6-ENTRY TUBAL3 ([RC216194], Right lane) cDNA for 48 hrs and lysed. Equivalent amounts of cell lysates (5 ug per lane) were separated by SDS-PAGE and immunoblotted with anti-TUBAL3. Positive lysates [LY411058] (100ug) and [LC411058] (20ug) can be purchased separately from OriGene.



Western blot analysis of extracts (35ug) from 9 different cell lines by using anti-TUBAL3 monoclonal antibody (HepG2: human; HeLa: human; SVT2: mouse; A549: human; COS7: monkey; Jurkat: human; MDCK: canine; PC12: rat; MCF7: human).



Anti-TUBAL3 mouse monoclonal antibody ([TA503932]) immunofluorescent staining of COS7 cells transiently transfected by pCMV6-ENTRY TUBAL3 ([RC216194]).



HEK293T cells transfected with either [RC216194] overexpress plasmid (Red) or empty vector control plasmid (Blue) were immunostained by anti-TUBAL3 antibody ([TA503932]), and then analyzed by flow cytometry.