

Product datasheet for **TA503930S**

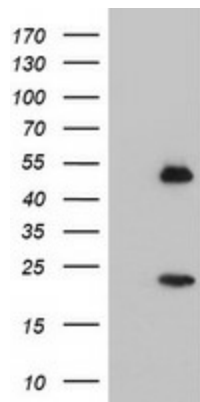
Nucleobindin 1 (NUCB1) Mouse Monoclonal Antibody [Clone ID: OTI2A5]

Product data:

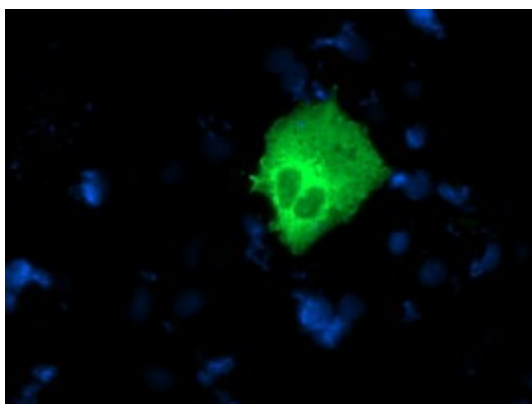
| | |
|-------------------------|--|
| Product Type: | Primary Antibodies |
| Clone Name: | OTI2A5 |
| Applications: | IF, WB |
| Recommended Dilution: | WB 1:500, IF 1:100 |
| Reactivity: | Human, Mouse, Rat |
| Host: | Mouse |
| Isotype: | IgG1 |
| Clonality: | Monoclonal |
| Immunogen: | Full length human recombinant protein of human NUCB1(NP_006175) produced in HEK293T cell. |
| Formulation: | PBS (pH 7.3) containing 1% BSA, 50% glycerol and 0.02% sodium azide. |
| Concentration: | 0.65 mg/ml |
| Purification: | Purified from mouse ascites fluids or tissue culture supernatant by affinity chromatography (protein A/G) |
| Conjugation: | Unconjugated |
| Storage: | Store at -20°C as received. |
| Stability: | Stable for 12 months from date of receipt. |
| Predicted Protein Size: | 53.7 kDa |
| Gene Name: | nucleobindin 1 |
| Database Link: | NP_006175 Entrez Gene 84595 Rat Entrez Gene 4924 Human Q02818 |
| Background: | This gene encodes a member of a small calcium-binding EF-hand protein family. The encoded protein is thought to have a key role in Golgi calcium homeostasis and Ca(2+)-regulated signal transduction events. [provided by RefSeq] |
| Synonyms: | CALNUC; NUC |



[View online »](#)

Product images:

HEK293T cells were transfected with the pCMV6-ENTRY control (Left lane) or pCMV6-ENTRY NUCB1 ([RC201786], Right lane) cDNA for 48 hrs and lysed. Equivalent amounts of cell lysates (5 ug per lane) were separated by SDS-PAGE and immunoblotted with anti-NUCB1. Positive lysates [LY416822] (100ug) and [LC416822] (20ug) can be purchased separately from OriGene.



Anti-NUCB1 mouse monoclonal antibody ([TA503930]) immunofluorescent staining of COS7 cells transiently transfected by pCMV6-ENTRY NUCB1 ([RC201786]).