

Product datasheet for **TA503930**

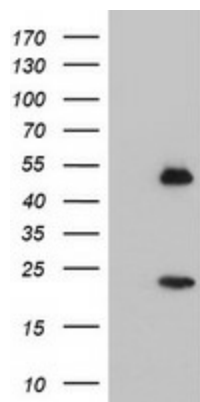
Nucleobindin 1 (NUCB1) Mouse Monoclonal Antibody [Clone ID: OTI2A5]

Product data:

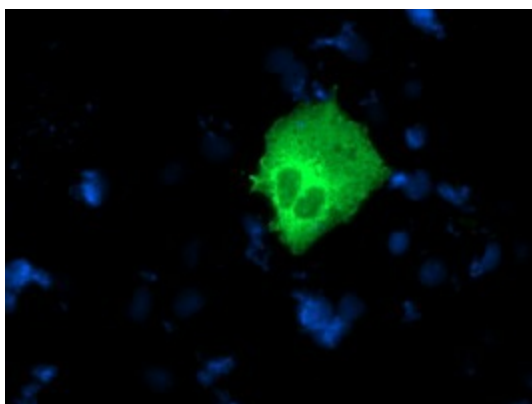
Product Type:	Primary Antibodies
Clone Name:	OTI2A5
Applications:	IF, WB
Recommended Dilution:	WB 1:500, IF 1:100
Reactivity:	Human, Mouse, Rat
Host:	Mouse
Isotype:	IgG1
Clonality:	Monoclonal
Immunogen:	Full length human recombinant protein of human NUCB1(NP_006175) produced in HEK293T cell.
Formulation:	PBS (pH 7.3) containing 1% BSA, 50% glycerol and 0.02% sodium azide.
Concentration:	0.65 mg/ml
Purification:	Purified from mouse ascites fluids or tissue culture supernatant by affinity chromatography (protein A/G)
Conjugation:	Unconjugated
Storage:	Store at -20°C as received.
Stability:	Stable for 12 months from date of receipt.
Predicted Protein Size:	53.7 kDa
Gene Name:	nucleobindin 1
Database Link:	NP_006175 Entrez Gene 84595 Rat Entrez Gene 4924 Human Q02818
Background:	This gene encodes a member of a small calcium-binding EF-hand protein family. The encoded protein is thought to have a key role in Golgi calcium homeostasis and Ca(2+)-regulated signal transduction events. [provided by RefSeq]
Synonyms:	CALNUC; NUC



[View online »](#)

Product images:

HEK293T cells were transfected with the pCMV6-ENTRY control (Left lane) or pCMV6-ENTRY NUCB1 ([RC201786], Right lane) cDNA for 48 hrs and lysed. Equivalent amounts of cell lysates (5 ug per lane) were separated by SDS-PAGE and immunoblotted with anti-NUCB1. Positive lysates [LY416822] (100ug) and [LC416822] (20ug) can be purchased separately from OriGene.



Anti-NUCB1 mouse monoclonal antibody (TA503930) immunofluorescent staining of COS7 cells transiently transfected by pCMV6-ENTRY NUCB1 ([RC201786]).