

## Product datasheet for **TA503928S**

### **SERPINB2 Mouse Monoclonal Antibody [Clone ID: OTI1F6]**

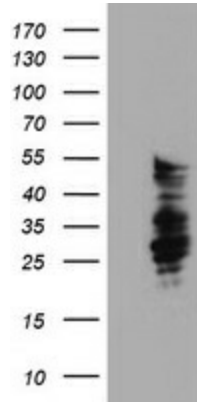
#### **Product data:**

<b>Product Type:</b>	Primary Antibodies
<b>Clone Name:</b>	OTI1F6
<b>Applications:</b>	FC, IHC, WB
<b>Recommended Dilution:</b>	WB 1:2000, IHC 1:150, FLOW 1:100
<b>Reactivity:</b>	Human
<b>Host:</b>	Mouse
<b>Isotype:</b>	IgG1
<b>Clonality:</b>	Monoclonal
<b>Immunogen:</b>	Full length human recombinant protein of human SERPINB2(NP_002566) produced in HEK293T cell.
<b>Formulation:</b>	PBS (pH 7.3) containing 1% BSA, 50% glycerol and 0.02% sodium azide.
<b>Concentration:</b>	0.82 mg/ml
<b>Purification:</b>	Purified from mouse ascites fluids or tissue culture supernatant by affinity chromatography (protein A/G)
<b>Conjugation:</b>	Unconjugated
<b>Storage:</b>	Store at -20°C as received.
<b>Stability:</b>	Stable for 12 months from date of receipt.
<b>Predicted Protein Size:</b>	46.4 kDa
<b>Gene Name:</b>	serpin family B member 2
<b>Database Link:</b>	<a href="#">NP_002566</a> <a href="#">Entrez Gene 5055 Human</a> <a href="#">P05120</a>
<b>Synonyms:</b>	HsT1201; PAI; PAI-2; PAI2; PLANH2
<b>Protein Families:</b>	Druggable Genome, Secreted Protein

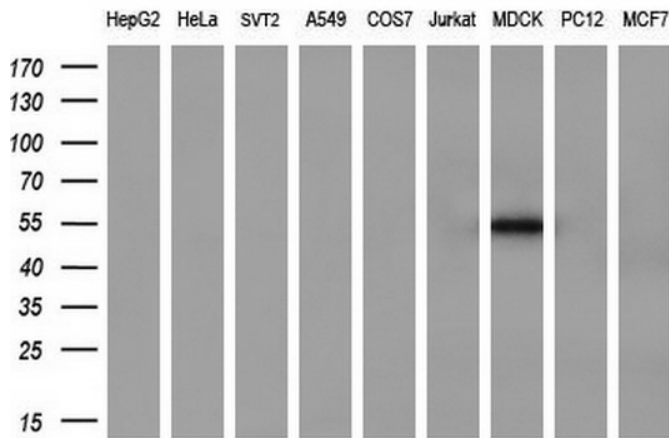


[View online »](#)

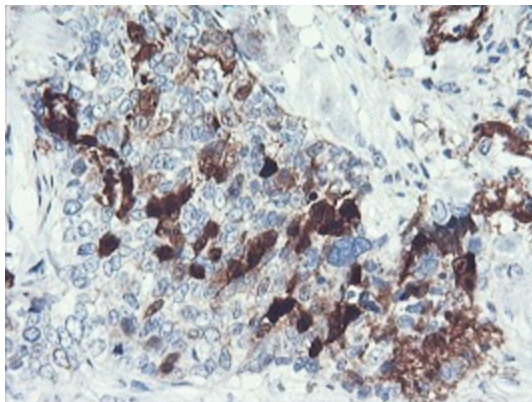
**Product images:**



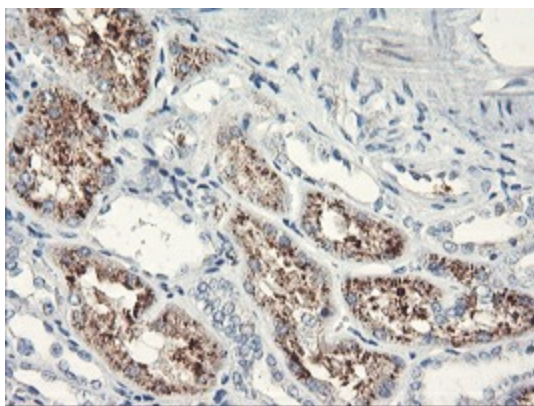
HEK293T cells were transfected with the pCMV6-ENTRY control (Left lane) or pCMV6-ENTRY SERPINB2 ([RC203139], Right lane) cDNA for 48 hrs and lysed. Equivalent amounts of cell lysates (5 ug per lane) were separated by SDS-PAGE and immunoblotted with anti-SERPINB2. Positive lysates [LY400915] (100ug) and [LC400915] (20ug) can be purchased separately from OriGene.



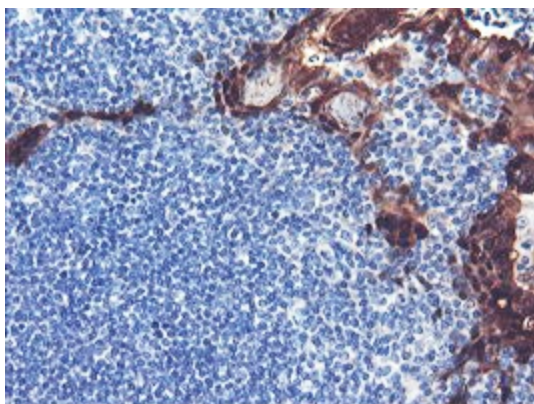
Western blot analysis of extracts (35ug) from 9 different cell lines by using anti-SERPINB2 monoclonal antibody (HepG2: human; HeLa: human; SVT2: mouse; A549: human; COS7: monkey; Jurkat: human; MDCK: canine; PC12: rat; MCF7: human) (1:200).



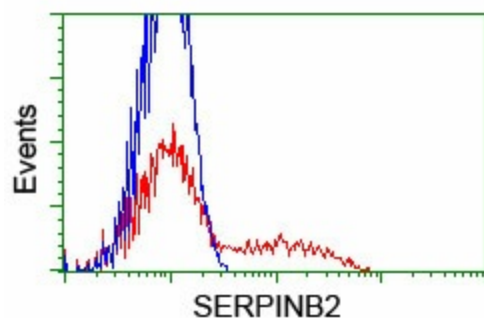
Immunohistochemical staining of paraffin-embedded Adenocarcinoma of Human breast tissue using anti-SERPINB2 mouse monoclonal antibody. (Heat-induced epitope retrieval by 10mM citric buffer, pH6.0, 100°C for 10min, [TA503928])



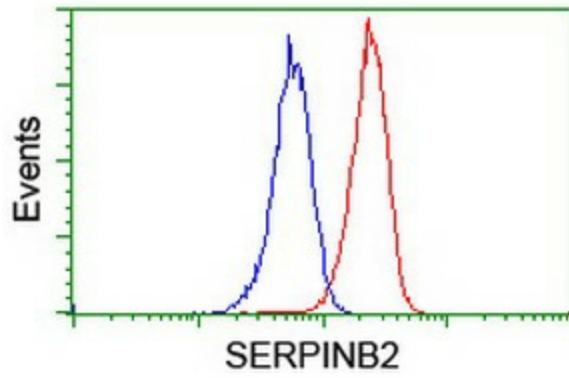
Immunohistochemical staining of paraffin-embedded Human Kidney tissue within the normal limits using anti-SERPINB2 mouse monoclonal antibody. (Heat-induced epitope retrieval by 10mM citric buffer, pH6.0, 100°C for 10min, [TA503928])



Immunohistochemical staining of paraffin-embedded Human tonsil within the normal limits using anti-SERPINB2 mouse monoclonal antibody. (Heat-induced epitope retrieval by 10mM citric buffer, pH6.0, 100°C for 10min, [TA503928])



HEK293T cells transfected with either [RC203139] overexpress plasmid (Red) or empty vector control plasmid (Blue) were immunostained by anti-SERPINB2 antibody ([TA503928]), and then analyzed by flow cytometry.



Flow cytometric Analysis of Jurkat cells, using anti-SERPINB2 antibody ([TA503928]), (Red), compared to a nonspecific negative control antibody, (Blue).