

Product datasheet for **TA503928BM**

SERPINB2 Mouse Monoclonal Antibody (HRP conjugated) [Clone ID: OT11F6]

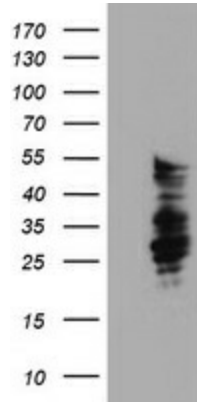
Product data:

Product Type:	Primary Antibodies
Clone Name:	OT11F6
Applications:	FC, IHC, WB
Recommended Dilution:	WB 1:2000, IHC 1:150, FLOW 1:100
Reactivity:	Human
Host:	Mouse
Isotype:	IgG1
Clonality:	Monoclonal
Immunogen:	Full length human recombinant protein of human SERPINB2(NP_002566) produced in HEK293T cell.
Formulation:	PBS (pH 7.3) containing 1% BSA, 50% glycerol.
Concentration:	0.5 mg/ml
Purification:	Purified from mouse ascites fluids or tissue culture supernatant by affinity chromatography (protein A/G)
Conjugation:	HRP
Storage:	Store at -20°C as received.
Stability:	Stable for 12 months from date of receipt.
Predicted Protein Size:	46.4 kDa
Gene Name:	serpin family B member 2
Database Link:	NP_002566 Entrez Gene 5055 Human P05120
Synonyms:	HsT1201; PAI; PAI-2; PAI2; PLANH2
Protein Families:	Druggable Genome, Secreted Protein

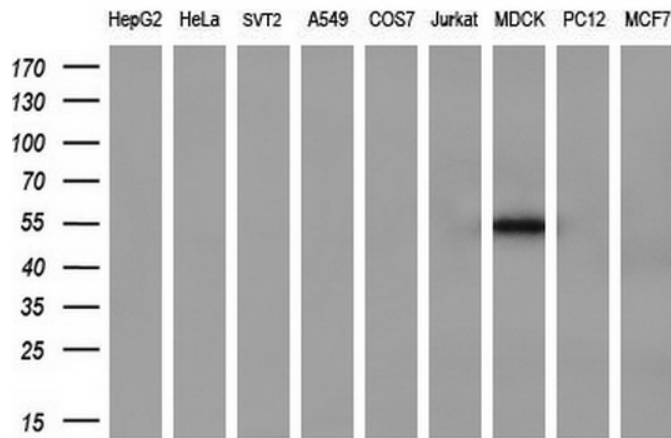


[View online »](#)

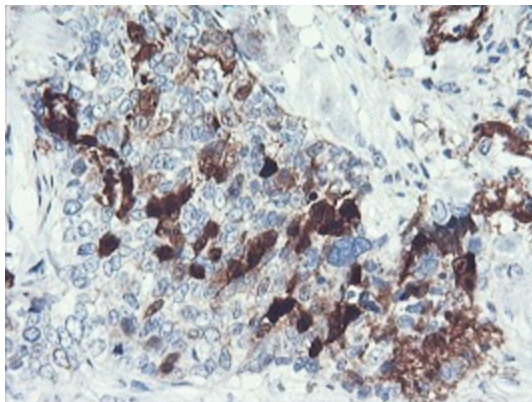
Product images:



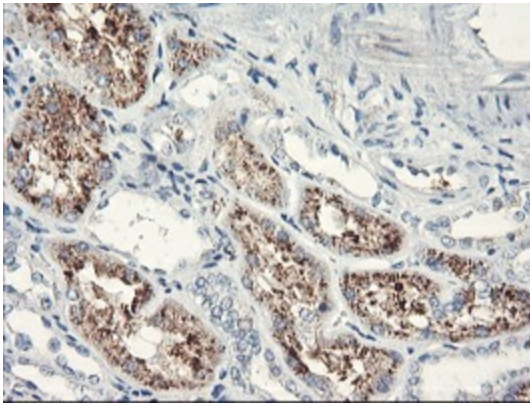
HEK293T cells were transfected with the pCMV6-ENTRY control (Left lane) or pCMV6-ENTRY SERPINB2 ([RC203139], Right lane) cDNA for 48 hrs and lysed. Equivalent amounts of cell lysates (5 ug per lane) were separated by SDS-PAGE and immunoblotted with anti-SERPINB2. Positive lysates [LY400915] (100ug) and [LC400915] (20ug) can be purchased separately from OriGene.



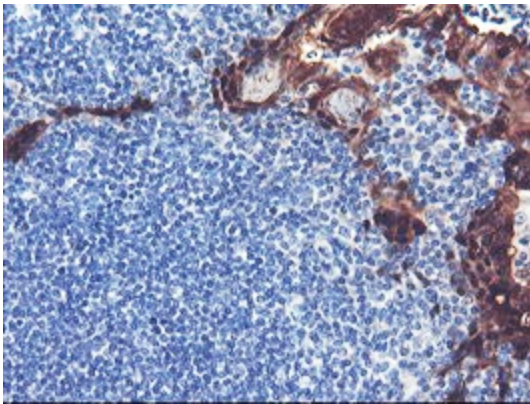
Western blot analysis of extracts (35ug) from 9 different cell lines by using anti-SERPINB2 monoclonal antibody (HepG2: human; HeLa: human; SVT2: mouse; A549: human; COS7: monkey; Jurkat: human; MDCK: canine; PC12: rat; MCF7: human) (1:200).



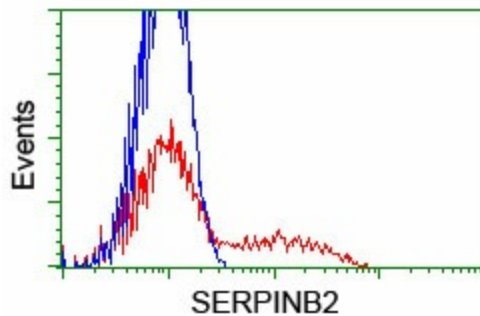
Immunohistochemical staining of paraffin-embedded Adenocarcinoma of Human breast tissue using anti-SERPINB2 mouse monoclonal antibody. (Heat-induced epitope retrieval by 10mM citric buffer, pH6.0, 100°C for 10min, [TA503928])



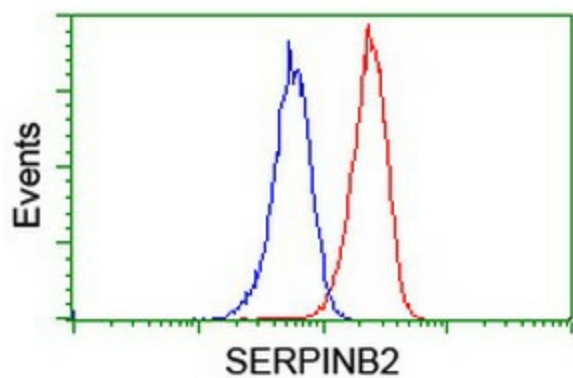
Immunohistochemical staining of paraffin-embedded Human Kidney tissue within the normal limits using anti-SERPINB2 mouse monoclonal antibody. (Heat-induced epitope retrieval by 10mM citric buffer, pH6.0, 100°C for 10min, [TA503928])



Immunohistochemical staining of paraffin-embedded Human tonsil within the normal limits using anti-SERPINB2 mouse monoclonal antibody. (Heat-induced epitope retrieval by 10mM citric buffer, pH6.0, 100°C for 10min, [TA503928])



HEK293T cells transfected with either [RC203139] overexpress plasmid (Red) or empty vector control plasmid (Blue) were immunostained by anti-SERPINB2 antibody ([TA503928]), and then analyzed by flow cytometry.



Flow cytometric Analysis of Jurkat cells, using anti-SERPINB2 antibody ([TA503928]), (Red), compared to a nonspecific negative control antibody, (Blue).