

Product datasheet for **TA503921AM**

TAL1 Mouse Monoclonal Antibody (Biotin conjugated) [Clone ID: OTI6A2]

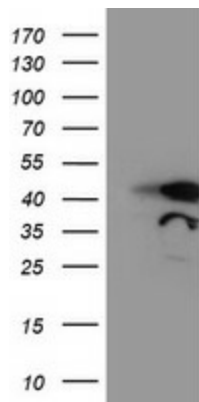
Product data:

| | |
|-------------------------|--|
| Product Type: | Primary Antibodies |
| Clone Name: | OTI6A2 |
| Applications: | FC, IF, WB |
| Recommended Dilution: | WB 1:2000, IF 1:100, FLOW 1:100 |
| Reactivity: | Human, Mouse, Rat |
| Host: | Mouse |
| Isotype: | IgG1 |
| Clonality: | Monoclonal |
| Immunogen: | Full length human recombinant protein of human TAL1(NP_003180) produced in HEK293T cell. |
| Formulation: | PBS (pH 7.3) containing 1% BSA, 50% glycerol and 0.02% sodium azide. |
| Concentration: | 0.5 mg/ml |
| Purification: | Purified from mouse ascites fluids or tissue culture supernatant by affinity chromatography (protein A/G) |
| Conjugation: | Biotin |
| Storage: | Store at -20°C as received. |
| Stability: | Stable for 12 months from date of receipt. |
| Predicted Protein Size: | 34.1 kDa |
| Gene Name: | TAL bHLH transcription factor 1, erythroid differentiation factor |
| Database Link: | NP_003180 Entrez Gene 21349 Mouse Entrez Gene 313507 Rat Entrez Gene 6886 Human P17542 |
| Synonyms: | bHLHa17; SCL; tal-1; TCL5 |
| Protein Families: | Adult stem cells, Druggable Genome, ES Cell Differentiation/IPS, Transcription Factors |

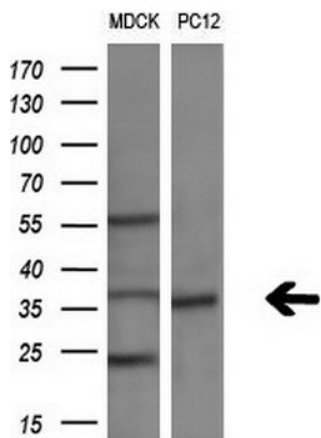


[View online »](#)

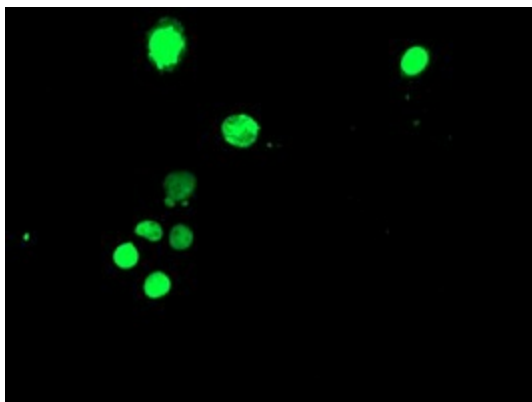
Product images:



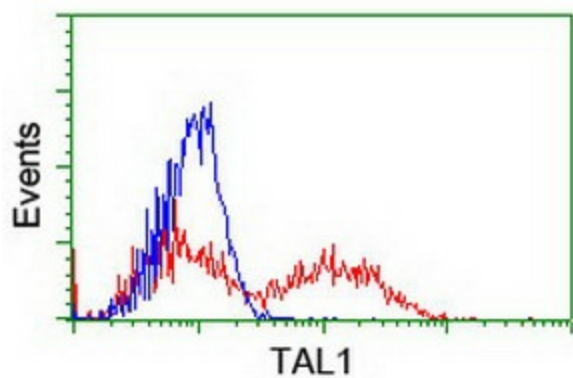
HEK293T cells were transfected with the pCMV6-ENTRY control (Left lane) or pCMV6-ENTRY TAL1 ([RC222628], Right lane) cDNA for 48 hrs and lysed. Equivalent amounts of cell lysates (5 ug per lane) were separated by SDS-PAGE and immunoblotted with anti-TAL1. Positive lysates [LY418842] (100ug) and [LC418842] (20ug) can be purchased separately from OriGene.



Western blot analysis of extracts (10ug) from 2 different cell lines by using anti-TAL1 monoclonal antibody (1:200).



Anti-TAL1 mouse monoclonal antibody ([TA503921]) immunofluorescent staining of COS7 cells transiently transfected by pCMV6-ENTRY TAL1 ([RC222628]).



HEK293T cells transfected with either [RC222628] overexpress plasmid (Red) or empty vector control plasmid (Blue) were immunostained by anti-TAL1 antibody ([TA503921]), and then analyzed by flow cytometry.