

Product datasheet for **TA503915S**

Aminopeptidase A (ENPEP) Mouse Monoclonal Antibody [Clone ID: OTI1D6]

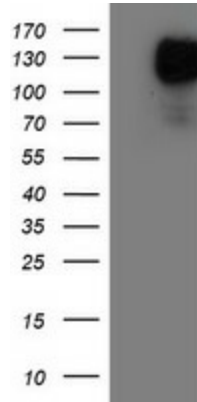
Product data:

Product Type:	Primary Antibodies
Clone Name:	OTI1D6
Applications:	FC, IF, WB
Recommended Dilution:	WB 1:2000, IF 1:100, FLOW 1:100
Reactivity:	Human
Host:	Mouse
Isotype:	IgG2b
Clonality:	Monoclonal
Immunogen:	Full length human recombinant protein of human ENPEP(NP_001948) produced in HEK293T cell.
Formulation:	PBS (pH 7.3) containing 1% BSA, 50% glycerol and 0.02% sodium azide.
Concentration:	0.54 mg/ml
Purification:	Purified from mouse ascites fluids or tissue culture supernatant by affinity chromatography (protein A/G)
Conjugation:	Unconjugated
Storage:	Store at -20°C as received.
Stability:	Stable for 12 months from date of receipt.
Predicted Protein Size:	109.1 kDa
Gene Name:	glutamyl aminopeptidase
Database Link:	NP_001968 Entrez Gene 2028 Human Q07075
Synonyms:	APA; CD249; gp160
Protein Families:	Druggable Genome, ES Cell Differentiation/IPS, Protease, Transmembrane
Protein Pathways:	Renin-angiotensin system

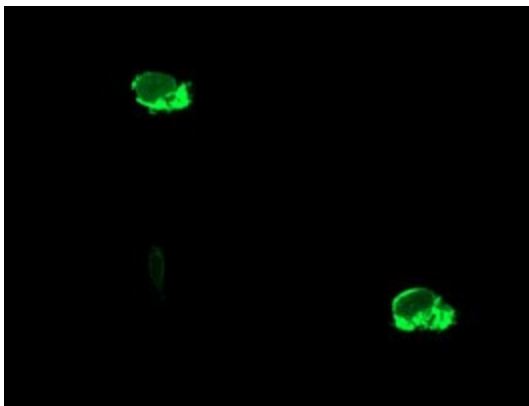


[View online »](#)

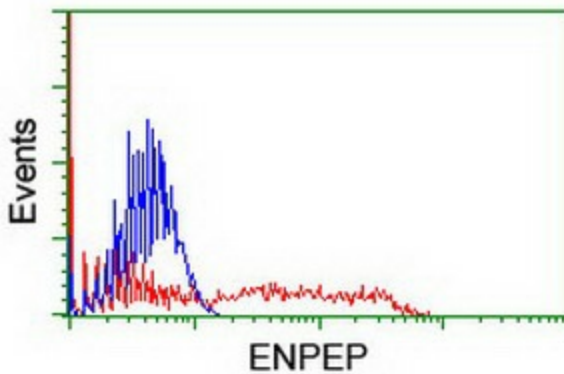
Product images:



HEK293T cells were transfected with the pCMV6-ENTRY control (Left lane) or pCMV6-ENTRY ENPEP ([RC210521], Right lane) cDNA for 48 hrs and lysed. Equivalent amounts of cell lysates (5 ug per lane) were separated by SDS-PAGE and immunoblotted with anti-ENPEP. Positive lysates [LY419610] (100ug) and [LC419610] (20ug) can be purchased separately from OriGene.



Anti-ENPEP mouse monoclonal antibody ([TA503915]) immunofluorescent staining of COS7 cells transiently transfected by pCMV6-ENTRY ENPEP ([RC210521]).



HEK293T cells transfected with either [RC210521] overexpress plasmid (Red) or empty vector control plasmid (Blue) were immunostained by anti-ENPEP antibody ([TA503915]), and then analyzed by flow cytometry.