

Product datasheet for **TA503908BM**

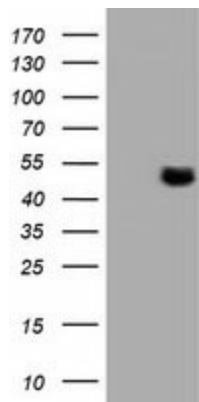
TUBAL3 Mouse Monoclonal Antibody (HRP conjugated) [Clone ID: OTI4D9]

Product data:

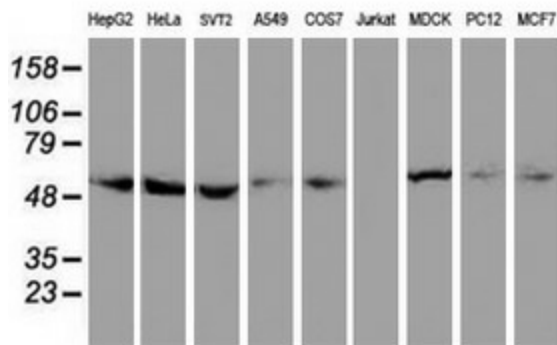
Product Type:	Primary Antibodies
Clone Name:	OTI4D9
Applications:	FC, IHC, WB
Recommended Dilution:	WB 1:500~2000, IHC 1:150, FLOW 1:100
Reactivity:	Human, Dog, Rat, Monkey, Mouse
Host:	Mouse
Isotype:	IgG2b
Clonality:	Monoclonal
Immunogen:	Human recombinant protein fragment corresponding to amino acids 150-446 of human TUBAL3(NP_079079) produced in E.coli.
Formulation:	PBS (pH 7.3) containing 1% BSA, 50% glycerol.
Concentration:	0.5 mg/ml
Purification:	Purified from mouse ascites fluids or tissue culture supernatant by affinity chromatography (protein A/G)
Conjugation:	HRP
Storage:	Store at -20°C as received.
Stability:	Stable for 12 months from date of receipt.
Predicted Protein Size:	49.7 kDa
Gene Name:	tubulin alpha like 3
Database Link:	NP_079079 Entrez Gene 238463 MouseEntrez Gene 291287 RatEntrez Gene 487148 DogEntrez Gene 722506 MonkeyEntrez Gene 79861 Human A6NHL2
Synonyms:	FLJ21665; MGC119347; MGC119349
Protein Families:	Druggable Genome
Protein Pathways:	Gap junction, Pathogenic Escherichia coli infection



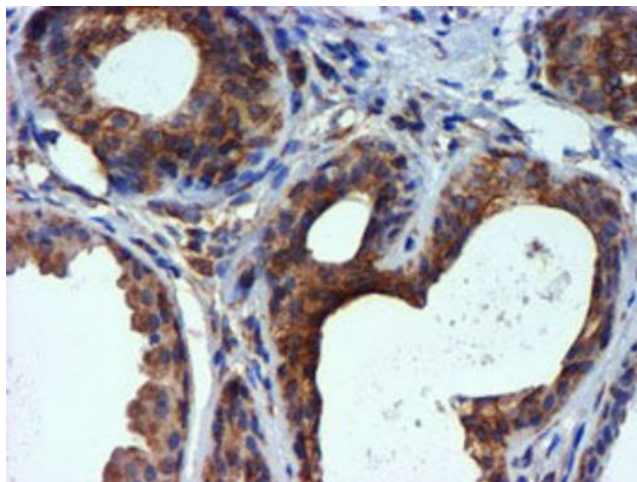
[View online »](#)

Product images:


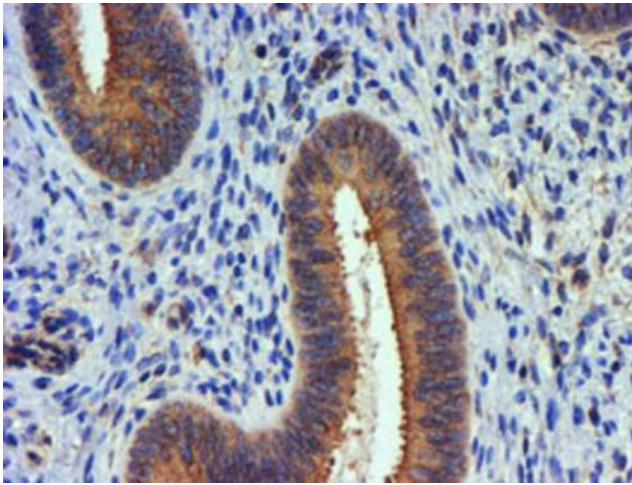
HEK293T cells were transfected with the pCMV6-ENTRY control (Left lane) or pCMV6-ENTRY TUBAL3 ([RC216194], Right lane) cDNA for 48 hrs and lysed. Equivalent amounts of cell lysates (5 ug per lane) were separated by SDS-PAGE and immunoblotted with anti-TUBAL3. Positive lysates [LY411058] (100ug) and [LC411058] (20ug) can be purchased separately from OriGene.



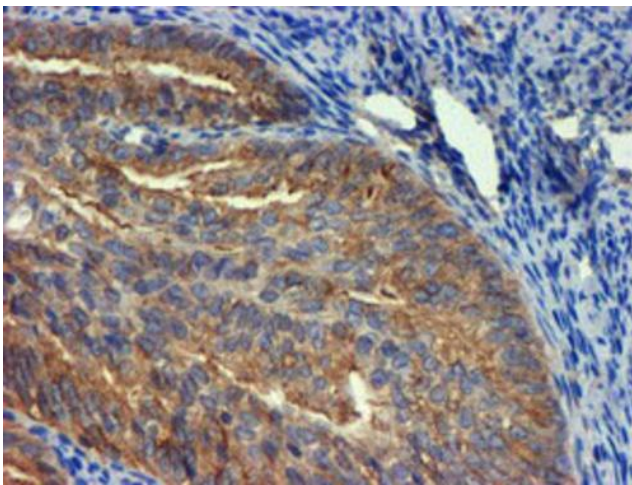
Western blot analysis of extracts (35ug) from 9 different cell lines by using anti-TUBAL3 monoclonal antibody.



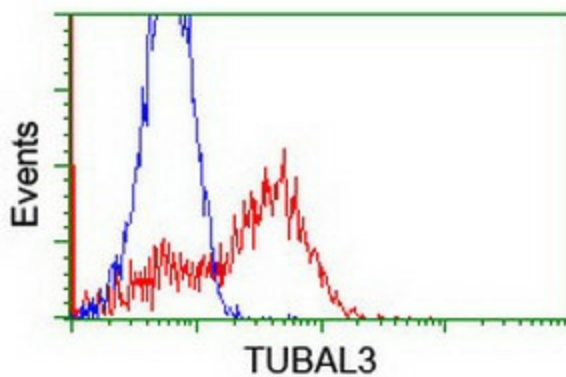
Immunohistochemical staining of paraffin-embedded Human breast tissue within the normal limits using anti-TUBAL3 mouse monoclonal antibody. (Heat-induced epitope retrieval by 10mM citric buffer, pH6.0, 100°C for 10min, [TA503908])



Immunohistochemical staining of paraffin-embedded Human endometrium tissue within the normal limits using anti-TUBAL3 mouse monoclonal antibody. (Heat-induced epitope retrieval by 10mM citric buffer, pH6.0, 100°C for 10min, [TA503908])



Immunohistochemical staining of paraffin-embedded Adenocarcinoma of Human endometrium tissue using anti-TUBAL3 mouse monoclonal antibody. (Heat-induced epitope retrieval by 10mM citric buffer, pH6.0, 100°C for 10min, [TA503908])



HEK293T cells transfected with either [RC216194] overexpress plasmid (Red) or empty vector control plasmid (Blue) were immunostained by anti-TUBAL3 antibody ([TA503908]), and then analyzed by flow cytometry.