

Product datasheet for **TA503892BM**

NAPE PLD (NAPEPLD) Mouse Monoclonal Antibody (HRP conjugated) [Clone ID: OTI1H4]

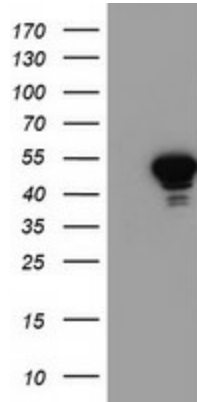
Product data:

Product Type:	Primary Antibodies
Clone Name:	OTI1H4
Applications:	IF, WB
Recommended Dilution:	WB 1:2000, IF 1:100
Reactivity:	Human, Mouse, Rat
Host:	Mouse
Isotype:	IgG1
Clonality:	Monoclonal
Immunogen:	Full length human recombinant protein of human NAPEPLD(NP_945341) produced in HEK293T cell.
Formulation:	PBS (pH 7.3) containing 1% BSA, 50% glycerol.
Concentration:	0.5 mg/ml
Purification:	Purified from mouse ascites fluids or tissue culture supernatant by affinity chromatography (protein A/G)
Conjugation:	HRP
Storage:	Store at -20°C as received.
Stability:	Stable for 12 months from date of receipt.
Predicted Protein Size:	45.4 kDa
Gene Name:	N-acyl phosphatidylethanolamine phospholipase D
Database Link:	NP_945341 Entrez Gene 242864 MouseEntrez Gene 296757 RatEntrez Gene 222236 Human Q6IQ20
Background:	NAPEPLD is a phospholipase D type enzyme that catalyzes the release of N-acylethanolamine (NAE) from N-acyl-phosphatidylethanolamine (NAPE) in the second step of the biosynthesis of N-acylethanolamine (Okamoto et al., 2004 [PubMed 14634025]). [supplied by OMIM]
Synonyms:	FMP30; NAPE-PLD

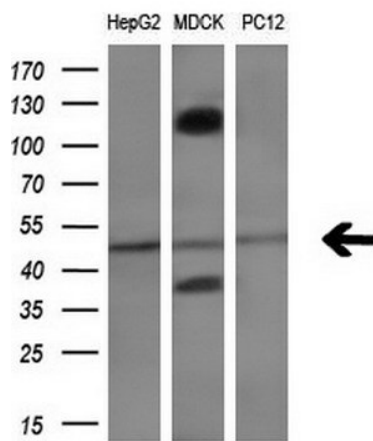


[View online »](#)

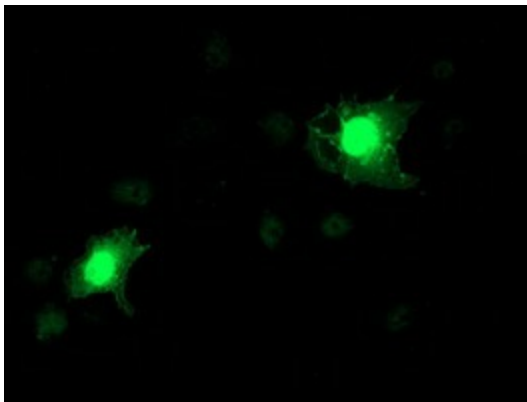
Product images:



HEK293T cells were transfected with the pCMV6-ENTRY control (Left lane) or pCMV6-ENTRY NAPEPLD ([RC209877], Right lane) cDNA for 48 hrs and lysed. Equivalent amounts of cell lysates (5 ug per lane) were separated by SDS-PAGE and immunoblotted with anti-NAPEPLD. Positive lysates [LY404703] (100ug) and [LC404703] (20ug) can be purchased separately from OriGene.



Western blot analysis of extracts (10ug) from 3 different cell lines by using anti-NAPEPLD monoclonal antibody (1:200).



Anti-NAPEPLD mouse monoclonal antibody ([TA503892]) immunofluorescent staining of COS7 cells transiently transfected by pCMV6-ENTRY NAPEPLD ([RC209877]).