

Product datasheet for **TA503891S**

RHOD Mouse Monoclonal Antibody [Clone ID: OTI2F7]

Product data:

Product Type:	Primary Antibodies
Clone Name:	OTI2F7
Applications:	FC, IF, WB
Recommended Dilution:	WB 1:2000, IF 1:100, FLOW 1:100
Reactivity:	Human
Host:	Mouse
Isotype:	IgG2b
Clonality:	Monoclonal
Immunogen:	Full length human recombinant protein of human RHOD(NP_055393) produced in HEK293T cell.
Formulation:	PBS (pH 7.3) containing 1% BSA, 50% glycerol and 0.02% sodium azide.
Concentration:	0.85 mg/ml
Purification:	Purified from mouse ascites fluids or tissue culture supernatant by affinity chromatography (protein A/G)
Conjugation:	Unconjugated
Storage:	Store at -20°C as received.
Stability:	Stable for 12 months from date of receipt.
Predicted Protein Size:	23.3 kDa
Gene Name:	ras homolog family member D
Database Link:	NP_055393 Entrez Gene 29984 Human O00212
Background:	Ras homolog, or Rho, proteins interact with protein kinases and may serve as targets for activated GTPase. They play a critical role in muscle differentiation. The protein encoded by this gene binds GTP and is a member of the small GTPase superfamily. It is involved in endosome dynamics and reorganization of the actin cytoskeleton, and it may coordinate membrane transport with the function of the cytoskeleton. [provided by RefSeq, Jul

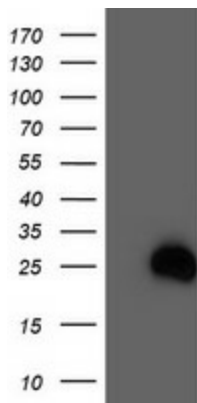


[View online »](#)

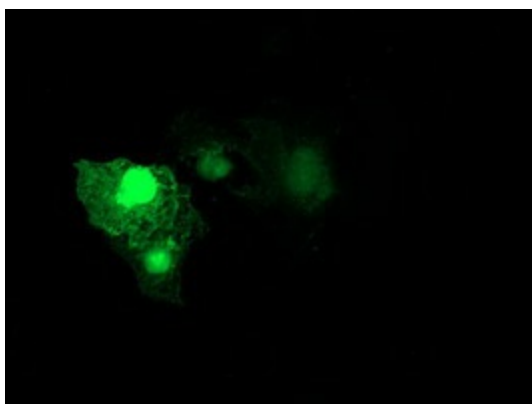
Synonyms: ARHD; Rho; RHOHP1; RHOM

Protein Pathways: Axon guidance

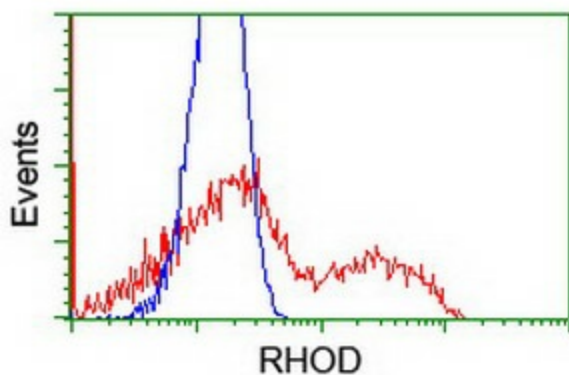
Product images:



HEK293T cells were transfected with the pCMV6-ENTRY control (Cat# [PS100001], Left lane) or pCMV6-ENTRY RHOD (Cat# [RC201722], Right lane) cDNA for 48 hrs and lysed. Equivalent amounts of cell lysates (5 ug per lane) were separated by SDS-PAGE and immunoblotted with anti-RHOD (Cat# [TA503891]). Positive lysates [LY415197] (100ug) and [LC415197] (20ug) can be purchased separately from OriGene.



Anti-RHOD mouse monoclonal antibody ([TA503891]) immunofluorescent staining of COS7 cells transiently transfected by pCMV6-ENTRY RHOD ([RC201722]).



HEK293T cells transfected with either [RC201722] overexpress plasmid (Red) or empty vector control plasmid (Blue) were immunostained by anti-RHOD antibody ([TA503891]), and then analyzed by flow cytometry.