

Product datasheet for **TA503891M**

RHOD Mouse Monoclonal Antibody [Clone ID: OTI2F7]

Product data:

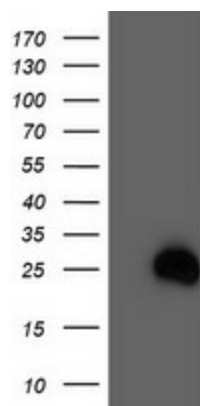
| | |
|-------------------------|--|
| Product Type: | Primary Antibodies |
| Clone Name: | OTI2F7 |
| Applications: | FC, IF, WB |
| Recommended Dilution: | WB 1:2000, IF 1:100, FLOW 1:100 |
| Reactivity: | Human |
| Host: | Mouse |
| Isotype: | IgG2b |
| Clonality: | Monoclonal |
| Immunogen: | Full length human recombinant protein of human RHOD(NP_055393) produced in HEK293T cell. |
| Formulation: | PBS (pH 7.3) containing 1% BSA, 50% glycerol and 0.02% sodium azide. |
| Concentration: | 0.85 mg/ml |
| Purification: | Purified from mouse ascites fluids or tissue culture supernatant by affinity chromatography (protein A/G) |
| Conjugation: | Unconjugated |
| Storage: | Store at -20°C as received. |
| Stability: | Stable for 12 months from date of receipt. |
| Predicted Protein Size: | 23.3 kDa |
| Gene Name: | ras homolog family member D |
| Database Link: | NP_055393 Entrez Gene 29984 Human O00212 |
| Background: | Ras homolog, or Rho, proteins interact with protein kinases and may serve as targets for activated GTPase. They play a critical role in muscle differentiation. The protein encoded by this gene binds GTP and is a member of the small GTPase superfamily. It is involved in endosome dynamics and reorganization of the actin cytoskeleton, and it may coordinate membrane transport with the function of the cytoskeleton. [provided by RefSeq, Jul |


[View online »](#)

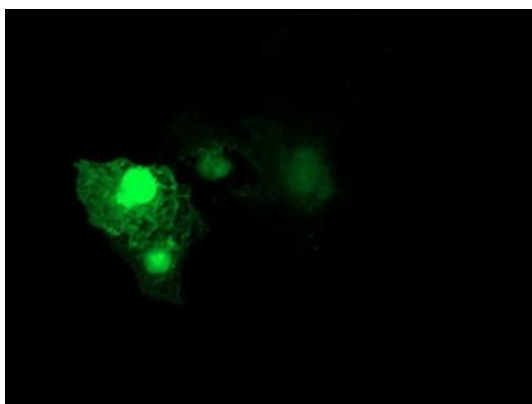
Synonyms: ARHD; Rho; RHOHP1; RHOM

Protein Pathways: Axon guidance

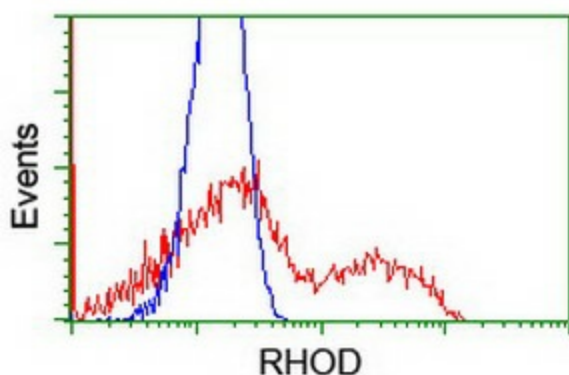
Product images:



HEK293T cells were transfected with the pCMV6-ENTRY control (Cat# [PS100001], Left lane) or pCMV6-ENTRY RHOD (Cat# [RC201722], Right lane) cDNA for 48 hrs and lysed. Equivalent amounts of cell lysates (5 ug per lane) were separated by SDS-PAGE and immunoblotted with anti-RHOD (Cat# [TA503891]). Positive lysates [LY415197] (100ug) and [LC415197] (20ug) can be purchased separately from OriGene.



Anti-RHOD mouse monoclonal antibody ([TA503891]) immunofluorescent staining of COS7 cells transiently transfected by pCMV6-ENTRY RHOD ([RC201722]).



HEK293T cells transfected with either [RC201722] overexpress plasmid (Red) or empty vector control plasmid (Blue) were immunostained by anti-RHOD antibody ([TA503891]), and then analyzed by flow cytometry.