

Product datasheet for **TA503889S**

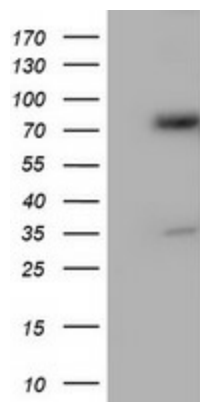
ERp72 (PDIA4) Mouse Monoclonal Antibody [Clone ID: OTI2A11]

Product data:

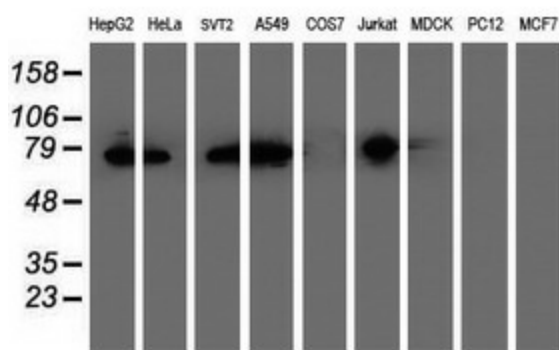
Product Type:	Primary Antibodies
Clone Name:	OTI2A11
Applications:	IHC, WB
Recommended Dilution:	WB 1:500~2000, IHC 1:150
Reactivity:	Human, Mouse, Rat
Host:	Mouse
Isotype:	IgG1
Clonality:	Monoclonal
Immunogen:	Full length human recombinant protein of human PDIA4(NP_004902) produce in HEK293T cell.
Formulation:	PBS (pH 7.3) containing 1% BSA, 50% glycerol and 0.02% sodium azide.
Concentration:	0.99 mg/ml
Purification:	Purified from mouse ascites fluids or tissue culture supernatant by affinity chromatography (protein A/G)
Conjugation:	Unconjugated
Storage:	Store at -20°C as received.
Stability:	Stable for 12 months from date of receipt.
Predicted Protein Size:	72.8 kDa
Gene Name:	protein disulfide isomerase family A member 4
Database Link:	NP_004902 Entrez Gene 12304 Mouse Entrez Gene 116598 Rat Entrez Gene 9601 Human P13667
Synonyms:	ERp-72; ERP70; ERP72
Protein Families:	Druggable Genome, Transmembrane
Protein Pathways:	Vibrio cholerae infection



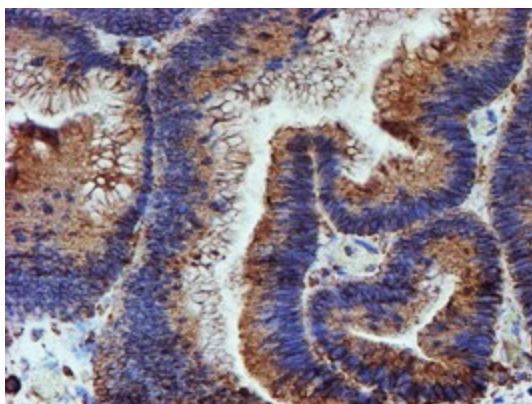
[View online »](#)

Product images:


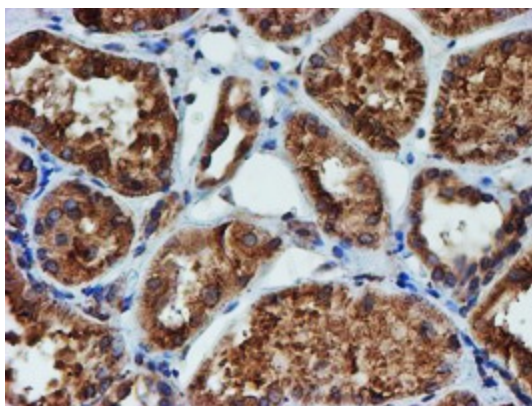
HEK293T cells were transfected with the pCMV6-ENTRY control (Left lane) or pCMV6-ENTRY PDIA4 ([RC204041], Right lane) cDNA for 48 hrs and lysed. Equivalent amounts of cell lysates (5 ug per lane) were separated by SDS-PAGE and immunoblotted with anti-PDIA4. Positive lysates [LY401531] (100ug) and [LC401531] (20ug) can be purchased separately from OriGene.



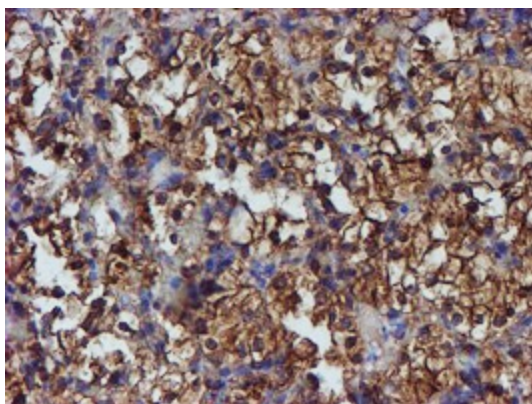
Western blot analysis of extracts (35ug) from 9 different cell lines by using anti-PDIA4 monoclonal antibody.



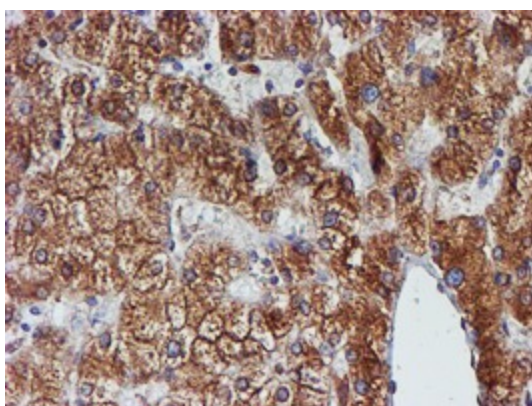
Immunohistochemical staining of paraffin-embedded Adenocarcinoma of Human colon tissue using anti-PDIA4 mouse monoclonal antibody. (Heat-induced epitope retrieval by 10mM citric buffer, pH6.0, 100°C for 10min, [TA503889])



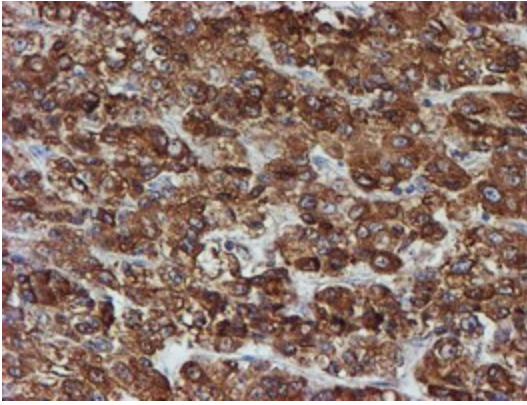
Immunohistochemical staining of paraffin-embedded Human Kidney tissue within the normal limits using anti-PDIA4 mouse monoclonal antibody. (Heat-induced epitope retrieval by 10mM citric buffer, pH6.0, 100°C for 10min, [TA503889])



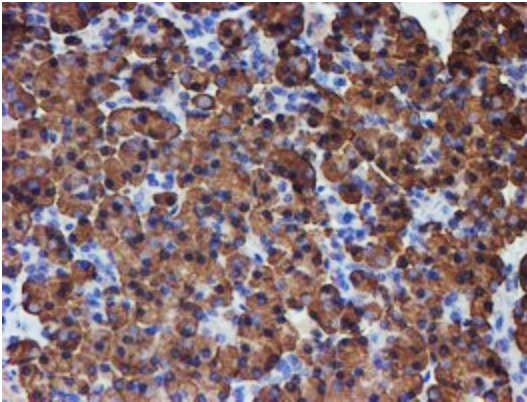
Immunohistochemical staining of paraffin-embedded Carcinoma of Human kidney tissue using anti-PDIA4 mouse monoclonal antibody. (Heat-induced epitope retrieval by 10mM citric buffer, pH6.0, 100°C for 10min, [TA503889])



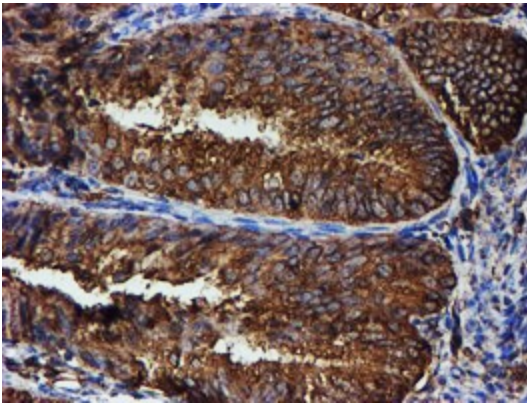
Immunohistochemical staining of paraffin-embedded Human liver tissue within the normal limits using anti-PDIA4 mouse monoclonal antibody. (Heat-induced epitope retrieval by 10mM citric buffer, pH6.0, 100°C for 10min, [TA503889])



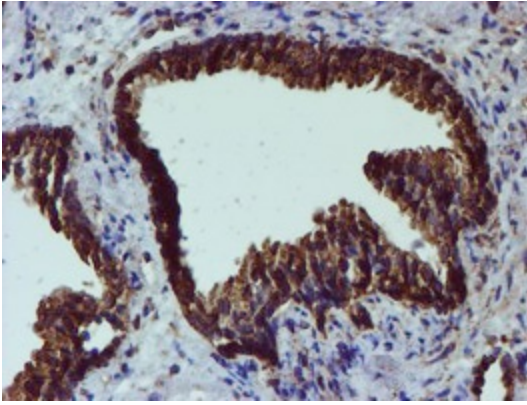
Immunohistochemical staining of paraffin-embedded Carcinoma of Human liver tissue using anti-PDIA4 mouse monoclonal antibody. (Heat-induced epitope retrieval by 10mM citric buffer, pH6.0, 100°C for 10min, [TA503889])



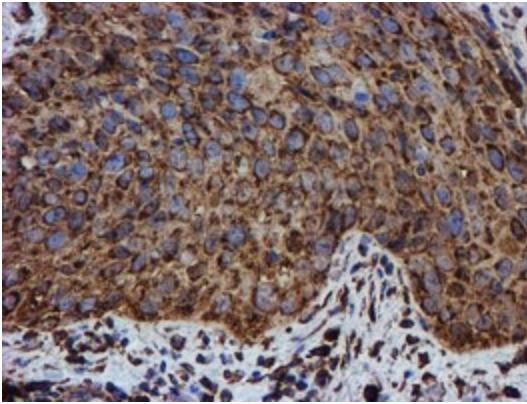
Immunohistochemical staining of paraffin-embedded Human pancreas tissue within the normal limits using anti-PDIA4 mouse monoclonal antibody. (Heat-induced epitope retrieval by 10mM citric buffer, pH6.0, 100°C for 10min, [TA503889])



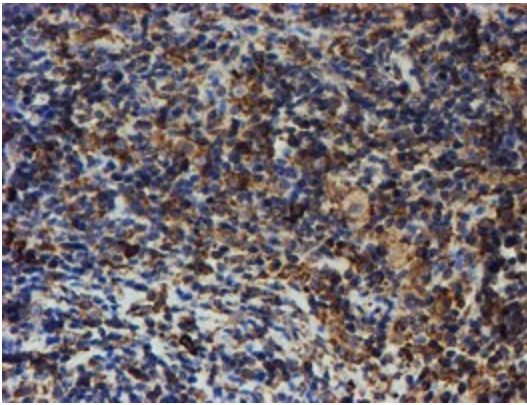
Immunohistochemical staining of paraffin-embedded Adenocarcinoma of Human endometrium tissue using anti-PDIA4 mouse monoclonal antibody. (Heat-induced epitope retrieval by 10mM citric buffer, pH6.0, 100°C for 10min, [TA503889])



Immunohistochemical staining of paraffin-embedded Human prostate tissue within the normal limits using anti-PDIA4 mouse monoclonal antibody. (Heat-induced epitope retrieval by 10mM citric buffer, pH6.0, 100°C for 10min, [TA503889])



Immunohistochemical staining of paraffin-embedded Carcinoma of Human bladder tissue using anti-PDIA4 mouse monoclonal antibody. (Heat-induced epitope retrieval by 10mM citric buffer, pH6.0, 100°C for 10min, [TA503889])



Immunohistochemical staining of paraffin-embedded Human Lymphoma tissue using anti-PDIA4 mouse monoclonal antibody. (Heat-induced epitope retrieval by 10mM citric buffer, pH6.0, 100°C for 10min, [TA503889])