

## Product datasheet for **TA503878AM**

### USP10 Mouse Monoclonal Antibody (Biotin conjugated) [Clone ID: OTI2E1]

#### Product data:

Product Type:	Primary Antibodies
Clone Name:	OTI2E1
Applications:	FC, IF, IHC, WB
Recommended Dilution:	WB 1:500~2000, IHC 1:150, IF 1:100, FLOW 1:100
Reactivity:	Human, Dog, Rat, Monkey, Mouse
Host:	Mouse
Isotype:	IgG1
Clonality:	Monoclonal
Immunogen:	Full length human recombinant protein of human USP10(NP_005144) produced in HEK293T cell.
Formulation:	PBS (pH 7.3) containing 1% BSA, 50% glycerol and 0.02% sodium azide.
Concentration:	0.5 mg/ml
Purification:	Purified from mouse ascites fluids or tissue culture supernatant by affinity chromatography (protein A/G)
Conjugation:	Biotin
Storage:	Store at -20°C as received.
Stability:	Stable for 12 months from date of receipt.
Predicted Protein Size:	87 kDa
Gene Name:	ubiquitin specific peptidase 10
Database Link:	<a href="#">NP_005144</a> <a href="#">Entrez Gene 22224 Mouse</a> <a href="#">Entrez Gene 307905 Rat</a> <a href="#">Entrez Gene 479625 Dog</a> <a href="#">Entrez Gene 718471 Monkey</a> <a href="#">Entrez Gene 9100 Human</a> <a href="#">Q14694</a>



[View online »](#)

**Background:**

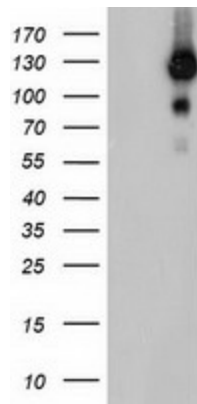
Ubiquitin is a highly conserved protein that is covalently linked to other proteins to regulate their function and degradation. This gene encodes a member of the ubiquitin-specific protease family of cysteine proteases. The enzyme specifically cleaves ubiquitin from ubiquitin-conjugated protein substrates. The protein is found in the nucleus and cytoplasm. It functions as a co-factor of the DNA-bound androgen receptor complex, and is inhibited by a protein in the Ras-GTPase pathway. The human genome contains several pseudogenes similar to this gene. [provided by RefSeq]

**Synonyms:**

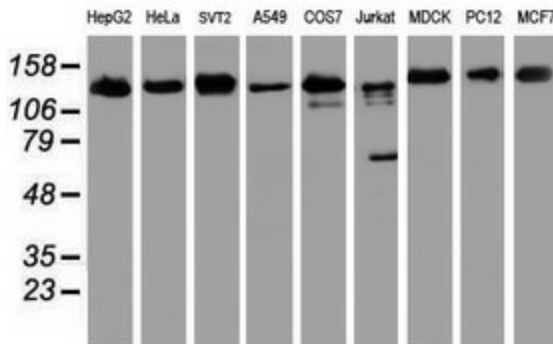
UBPO

**Protein Families:**

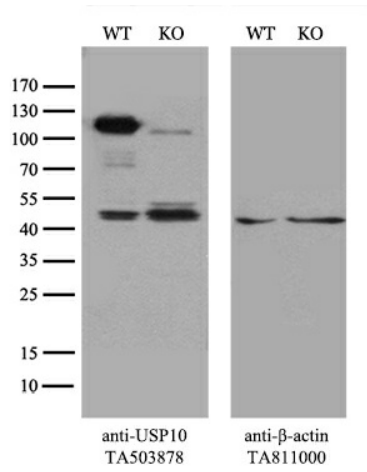
Druggable Genome, Protease

**Product images:**


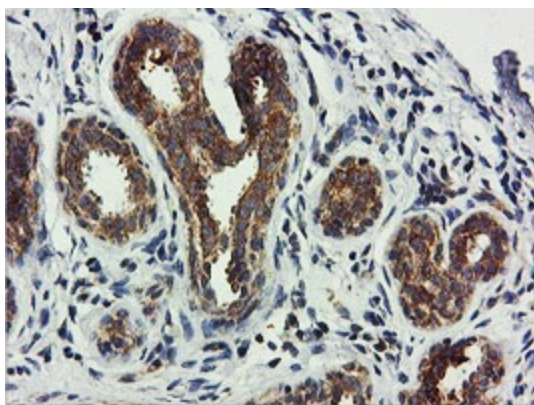
HEK293T cells were transfected with the pCMV6-ENTRY control (Cat# [PS100001], Left lane) or pCMV6-ENTRY USP10 (Cat# [RC200835], Right lane) cDNA for 48 hrs and lysed. Equivalent amounts of cell lysates (5 ug per lane) were separated by SDS-PAGE and immunoblotted with anti-USP10(Cat# [TA503878]). Positive lysates [LY417493] (100ug) and [LC417493] (20ug) can be purchased separately from OriGene.



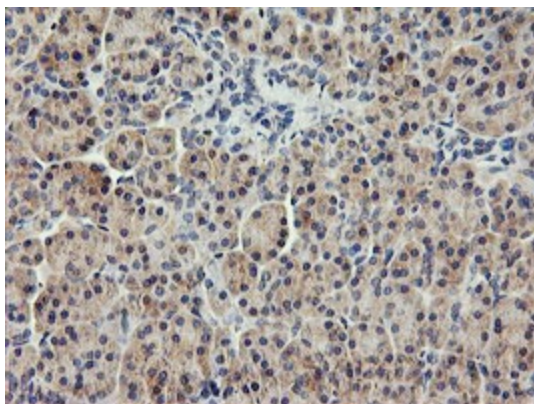
Western blot analysis of extracts (35ug) from 9 different cell lines by using anti-USP10 monoclonal antibody.



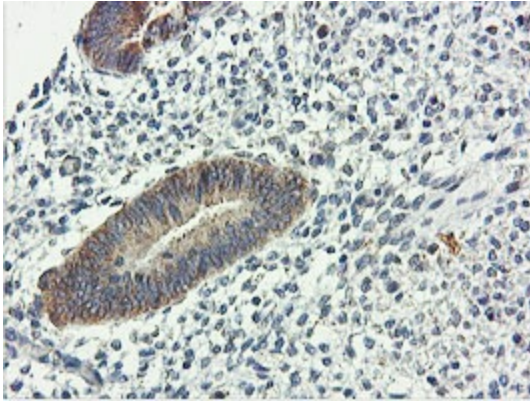
Equivalent amounts of cell lysates (10  $\mu$ g per lane) of wild-type HeLa cells (WT, Cat# LC810HELA) and USP10-Knockout HeLa cells (KO, Cat# [LC810881]) were separated by SDS-PAGE and immunoblotted with anti-USP10 monoclonal antibody [TA503878], (1:500). Then the blotted membrane was stripped and reprobed with anti- $\beta$ -actin antibody ([TA811000]) as a loading control.



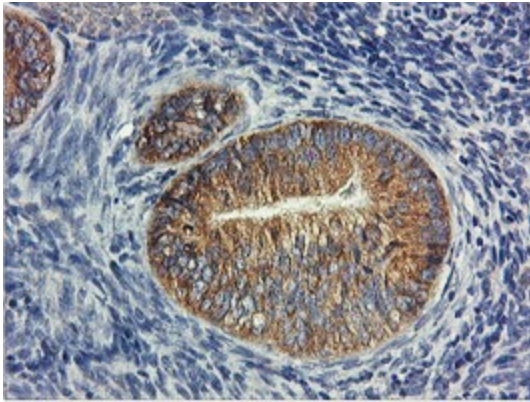
Immunohistochemical staining of paraffin-embedded Human breast tissue within the normal limits using anti-USP10 mouse monoclonal antibody. (Heat-induced epitope retrieval by 10mM citric buffer, pH6.0, 100°C for 10min, [TA503878])



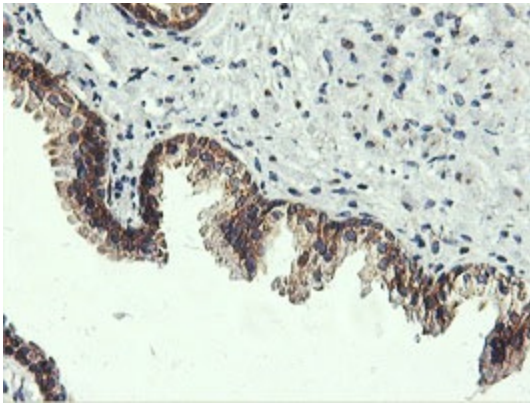
Immunohistochemical staining of paraffin-embedded Human pancreas tissue within the normal limits using anti-USP10 mouse monoclonal antibody. (Heat-induced epitope retrieval by 10mM citric buffer, pH6.0, 100°C for 10min, [TA503878])



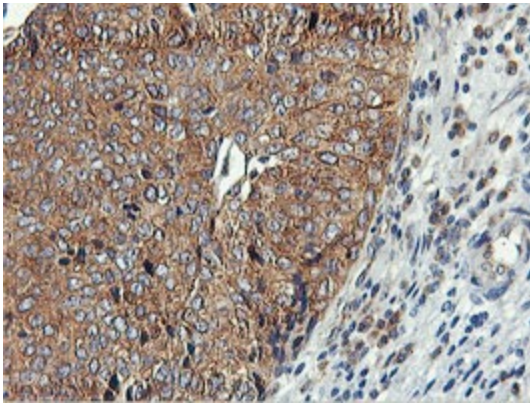
Immunohistochemical staining of paraffin-embedded Human endometrium tissue within the normal limits using anti-USP10 mouse monoclonal antibody. (Heat-induced epitope retrieval by 10mM citric buffer, pH6.0, 100°C for 10min, [TA503878])



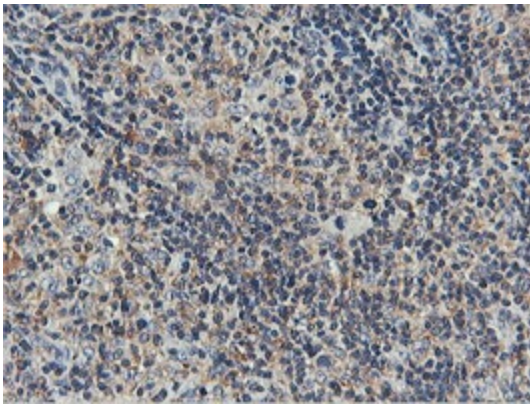
Immunohistochemical staining of paraffin-embedded Adenocarcinoma of Human endometrium tissue using anti-USP10 mouse monoclonal antibody. (Heat-induced epitope retrieval by 10mM citric buffer, pH6.0, 100°C for 10min, [TA503878])



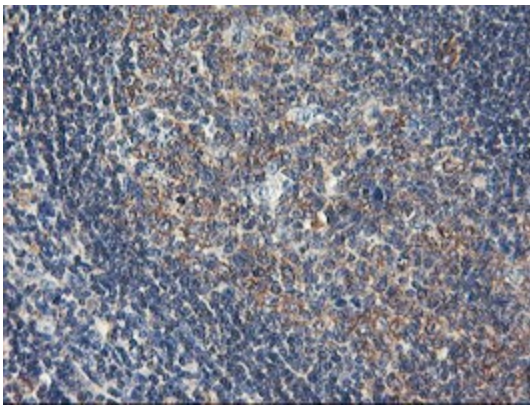
Immunohistochemical staining of paraffin-embedded Human prostate tissue within the normal limits using anti-USP10 mouse monoclonal antibody. (Heat-induced epitope retrieval by 10mM citric buffer, pH6.0, 100°C for 10min, [TA503878])



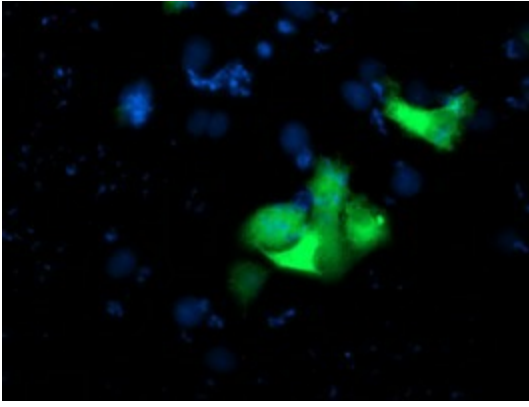
Immunohistochemical staining of paraffin-embedded Carcinoma of Human bladder tissue using anti-USP10 mouse monoclonal antibody. (Heat-induced epitope retrieval by 10mM citric buffer, pH6.0, 100°C for 10min, [TA503878])



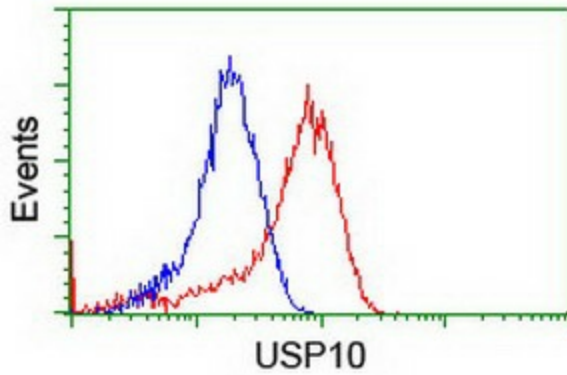
Immunohistochemical staining of paraffin-embedded Human lymphoma tissue using anti-USP10 mouse monoclonal antibody. (Heat-induced epitope retrieval by 10mM citric buffer, pH6.0, 100°C for 10min, [TA503878])



Immunohistochemical staining of paraffin-embedded Human tonsil within the normal limits using anti-USP10 mouse monoclonal antibody. (Heat-induced epitope retrieval by 10mM citric buffer, pH6.0, 100°C for 10min, [TA503878])



Anti-USP10 mouse monoclonal antibody ([TA503878]) immunofluorescent staining of COS7 cells transiently transfected by pCMV6-ENTRY USP10 ([RC200835]).



Flow cytometric Analysis of HeLa cells, using anti-USP10 antibody ([TA503878]), (Red), compared to a nonspecific negative control antibody, (Blue).