

## Product datasheet for **TA503861S**

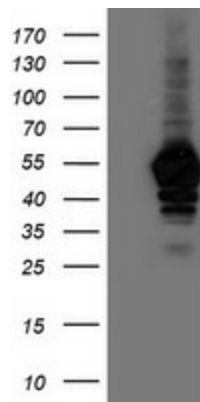
### NAPE PLD (NAPEPLD) Mouse Monoclonal Antibody [Clone ID: OTI7B9]

#### Product data:

Product Type:	Primary Antibodies
Clone Name:	OTI7B9
Applications:	FC, IF, IHC, WB
Recommended Dilution:	WB 1:2000, IHC 1:150, IF 1:100, FLOW 1:100
Reactivity:	Human, Mouse, Rat
Host:	Mouse
Isotype:	IgG1
Clonality:	Monoclonal
Immunogen:	Full length human recombinant protein of human NAPEPLD(NP_945341) produced in HEK293T cell.
Formulation:	PBS (pH 7.3) containing 1% BSA, 50% glycerol and 0.02% sodium azide.
Concentration:	0.78 mg/ml
Purification:	Purified from mouse ascites fluids or tissue culture supernatant by affinity chromatography (protein A/G)
Conjugation:	Unconjugated
Storage:	Store at -20°C as received.
Stability:	Stable for 12 months from date of receipt.
Predicted Protein Size:	45.4 kDa
Gene Name:	N-acyl phosphatidylethanolamine phospholipase D
Database Link:	<a href="#">NP_945341</a> <a href="#">Entrez Gene 242864</a> <a href="#">MouseEntrez Gene 296757</a> <a href="#">RatEntrez Gene 222236</a> <a href="#">Human Q6IQ20</a>
Background:	NAPEPLD is a phospholipase D type enzyme that catalyzes the release of N-acylethanolamine (NAE) from N-acyl-phosphatidylethanolamine (NAPE) in the second step of the biosynthesis of N-acylethanolamine (Okamoto et al., 2004 [PubMed 14634025]). [supplied by OMIM, Oct 2008]
Synonyms:	FMP30; NAPE-PLD



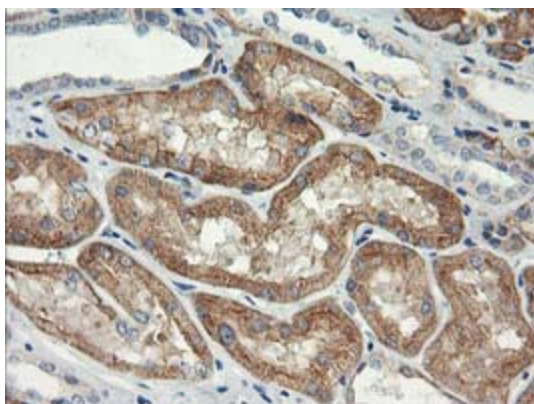
[View online »](#)

**Product images:**

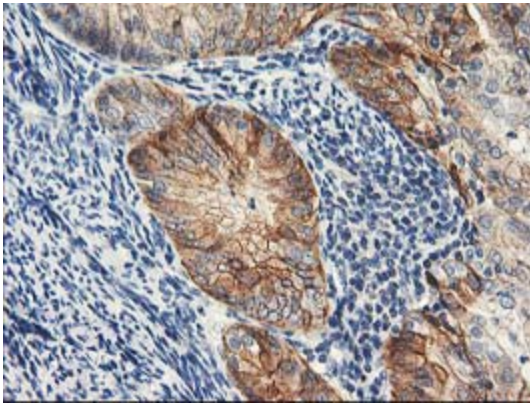
HEK293T cells were transfected with the pCMV6-ENTRY control (Left lane) or pCMV6-ENTRY NAPEPLD ([RC209877], Right lane) cDNA for 48 hrs and lysed. Equivalent amounts of cell lysates (5 ug per lane) were separated by SDS-PAGE and immunoblotted with anti-NAPEPLD. Positive lysates [LY404703] (100ug) and [LC404703] (20ug) can be purchased separately from OriGene.



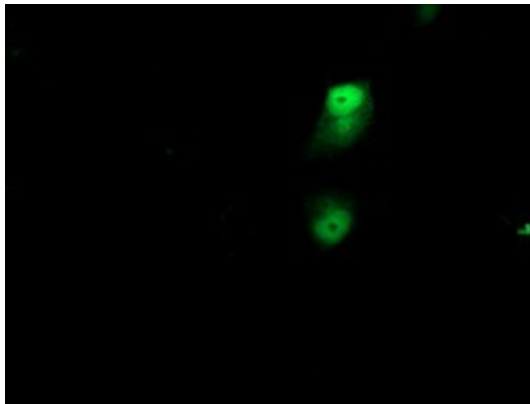
Immunohistochemical staining of paraffin-embedded Human colon tissue within the normal limits using anti-NAPEPLD mouse monoclonal antibody. (Heat-induced epitope retrieval by 10mM citric buffer, pH6.0, 100°C for 10min, [TA503861])



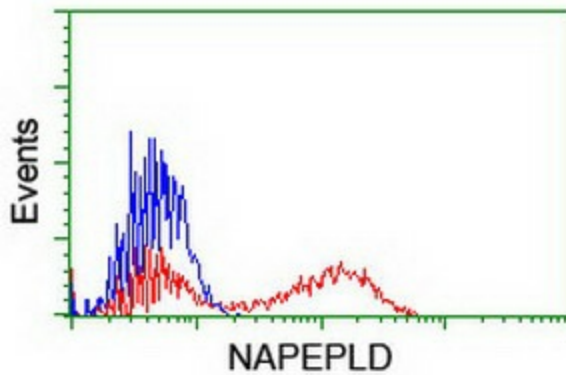
Immunohistochemical staining of paraffin-embedded Human Kidney tissue within the normal limits using anti-NAPEPLD mouse monoclonal antibody. (Heat-induced epitope retrieval by 10mM citric buffer, pH6.0, 100°C for 10min, [TA503861])



Immunohistochemical staining of paraffin-embedded Adenocarcinoma of Human endometrium tissue using anti-NAPEPLD mouse monoclonal antibody. (Heat-induced epitope retrieval by 10mM citric buffer, pH6.0, 100°C for 10min, [TA503861])



Anti-NAPEPLD mouse monoclonal antibody ([TA503861]) immunofluorescent staining of COS7 cells transiently transfected by pCMV6-ENTRY NAPEPLD ([RC209877]).



HEK293T cells transfected with either [RC209877] overexpress plasmid (Red) or empty vector control plasmid (Blue) were immunostained by anti-NAPEPLD antibody ([TA503861]), and then analyzed by flow cytometry.