

Product datasheet for **TA503858BM**

TRK fused gene (TFG) Mouse Monoclonal Antibody (HRP conjugated) [Clone ID: OTI2C3]

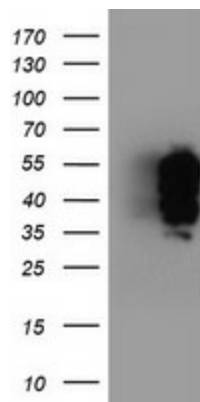
Product data:

| | |
|-------------------------|---|
| Product Type: | Primary Antibodies |
| Clone Name: | OTI2C3 |
| Applications: | IHC, WB |
| Recommended Dilution: | WB 1:2000, IHC 1:150 |
| Reactivity: | Human, Mouse, Rat |
| Host: | Mouse |
| Isotype: | IgG1 |
| Clonality: | Monoclonal |
| Immunogen: | Full length human recombinant protein of human TFG(NP_001007566) produced in HEK293T cell. |
| Formulation: | PBS (pH 7.3) containing 1% BSA, 50% glycerol. |
| Concentration: | 0.5 mg/ml |
| Purification: | Purified from mouse ascites fluids or tissue culture supernatant by affinity chromatography (protein A/G) |
| Conjugation: | HRP |
| Storage: | Store at -20°C as received. |
| Stability: | Stable for 12 months from date of receipt. |
| Predicted Protein Size: | 43.3 kDa |
| Gene Name: | trafficking from ER to golgi regulator |
| Database Link: | NP_001007566 Entrez Gene 360709 Rat Entrez Gene 10342 Human Q92734 |
| Background: | There are several documented fusion oncoproteins encoded partially by this gene. This gene also participates in several oncogenic rearrangements resulting in anaplastic lymphoma and mixoid chondrosarcoma, and may play a role in the NF-kappaB pathway. Multiple transcript variants have been found for this gene. [provided by RefSeq] |
| Synonyms: | HMSNP; SPG57; TF6; TRKT3 |

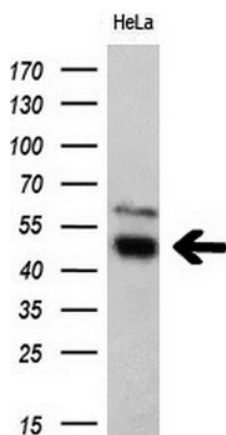

[View online »](#)

Protein Pathways: Pathways in cancer, Thyroid cancer

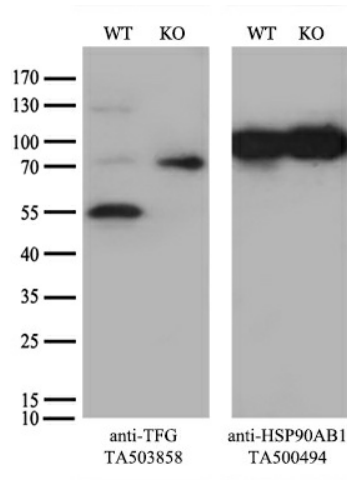
Product images:



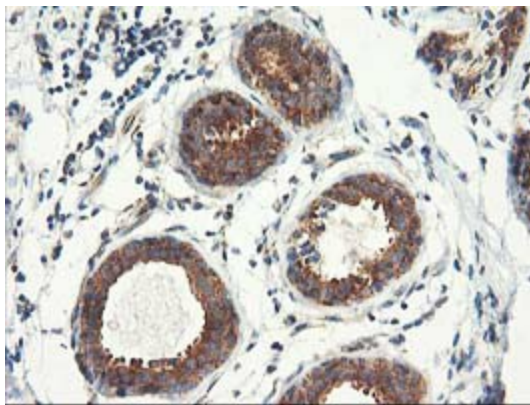
HEK293T cells were transfected with the pCMV6-ENTRY control (Cat# [PS100001], Left lane) or pCMV6-ENTRY TFG (Cat# [RC200293], Right lane) cDNA for 48 hrs and lysed. Equivalent amounts of cell lysates (5 ug per lane) were separated by SDS-PAGE and immunoblotted with anti-TFG(Cat# [TA503858]). Positive lysates [LY423514] (100ug) and [LC423514] (20ug) can be purchased separately from OriGene.



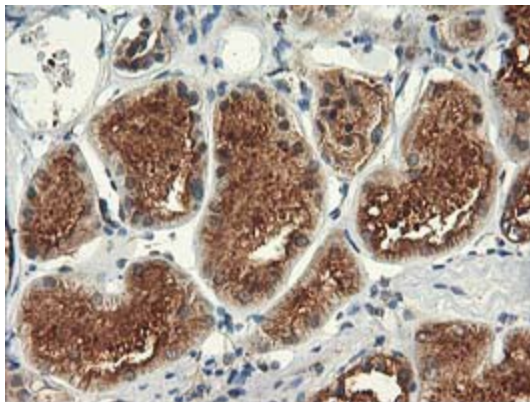
Western blot analysis of extracts (10ug) from 1 cell line by using anti-TFG monoclonal antibody (1:200).



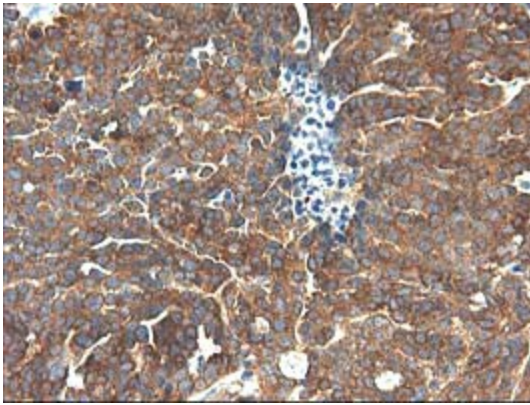
Equivalent amounts of cell lysates (10 ug per lane) of wild-type HeLa cells (WT, Cat# LC810HELA) and TFG-Knockout HeLa cells (KO, Cat# [LC831921]) were separated by SDS-PAGE and immunoblotted with anti-TFG monoclonal antibody [TA503858] (1:200). Then the blotted membrane was stripped and reprobed with anti-PCNA antibody as a loading control.



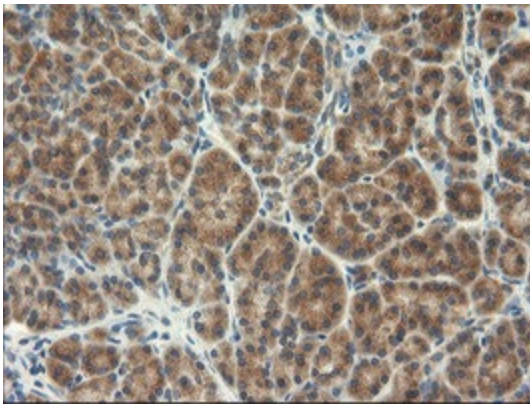
Immunohistochemical staining of paraffin-embedded Human breast tissue within the normal limits using anti-TFG mouse monoclonal antibody. (Heat-induced epitope retrieval by 10mM citric buffer, pH6.0, 100°C for 10min, [TA503858])



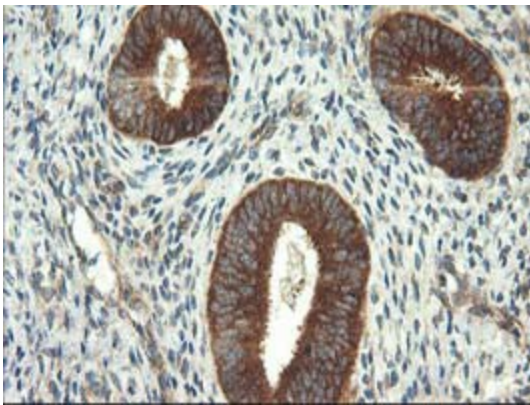
Immunohistochemical staining of paraffin-embedded Human Kidney tissue within the normal limits using anti-TFG mouse monoclonal antibody. (Heat-induced epitope retrieval by 10mM citric buffer, pH6.0, 100°C for 10min, [TA503858])



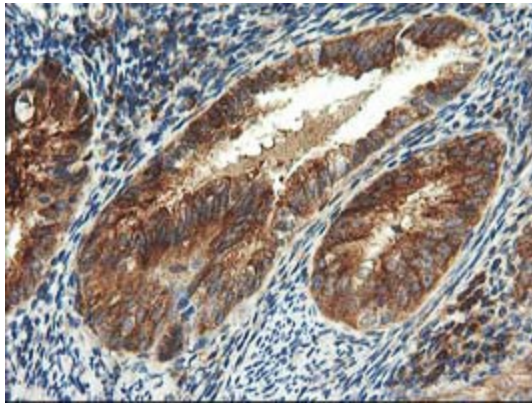
Immunohistochemical staining of paraffin-embedded Adenocarcinoma of Human ovary tissue using anti-TFG mouse monoclonal antibody. (Heat-induced epitope retrieval by 10mM citric buffer, pH6.0, 100°C for 10min, [TA503858])



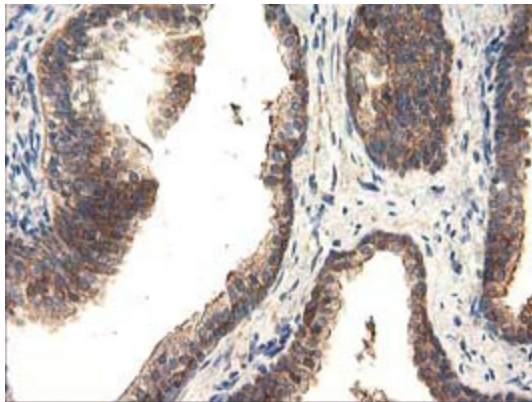
Immunohistochemical staining of paraffin-embedded Human pancreas tissue within the normal limits using anti-TFG mouse monoclonal antibody. (Heat-induced epitope retrieval by 10mM citric buffer, pH6.0, 100°C for 10min, [TA503858])



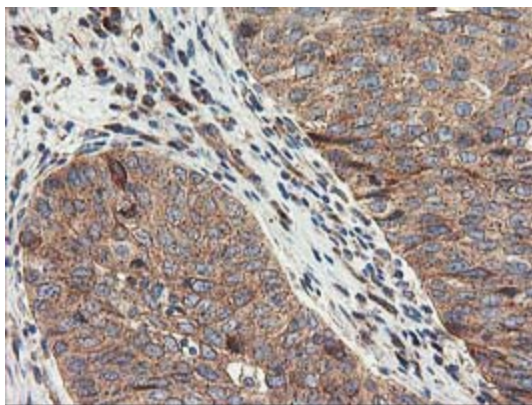
Immunohistochemical staining of paraffin-embedded Human endometrium tissue within the normal limits using anti-TFG mouse monoclonal antibody. (Heat-induced epitope retrieval by 10mM citric buffer, pH6.0, 100°C for 10min, [TA503858])



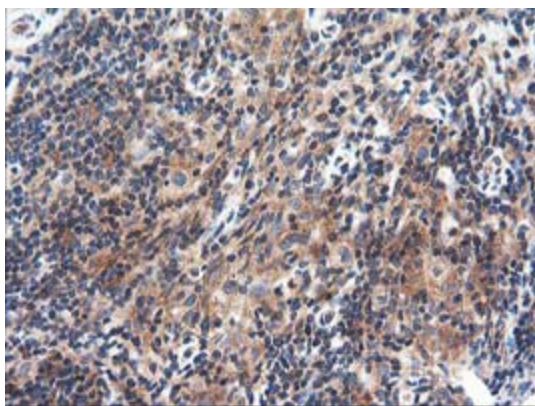
Immunohistochemical staining of paraffin-embedded Adenocarcinoma of Human endometrium tissue using anti-TFG mouse monoclonal antibody. (Heat-induced epitope retrieval by 10mM citric buffer, pH6.0, 100°C for 10min, [TA503858])



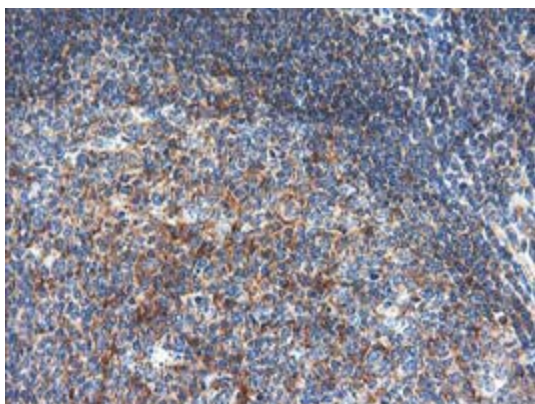
Immunohistochemical staining of paraffin-embedded Human prostate tissue within the normal limits using anti-TFG mouse monoclonal antibody. (Heat-induced epitope retrieval by 10mM citric buffer, pH6.0, 100°C for 10min, [TA503858])



Immunohistochemical staining of paraffin-embedded Carcinoma of Human bladder tissue using anti-TFG mouse monoclonal antibody. (Heat-induced epitope retrieval by 10mM citric buffer, pH6.0, 100°C for 10min, [TA503858])



Immunohistochemical staining of paraffin-embedded Human lymphoma tissue using anti-TFG mouse monoclonal antibody. (Heat-induced epitope retrieval by 10mM citric buffer, pH6.0, 100°C for 10min, [TA503858])



Immunohistochemical staining of paraffin-embedded Human tonsil within the normal limits using anti-TFG mouse monoclonal antibody. (Heat-induced epitope retrieval by 10mM citric buffer, pH6.0, 100°C for 10min, [TA503858])