

## Product datasheet for **TA503851BM**

### ARH (LDLRAP1) Mouse Monoclonal Antibody (HRP conjugated) [Clone ID: OTI5A12]

#### Product data:

Product Type:	Primary Antibodies
Clone Name:	OTI5A12
Applications:	FC, IF, WB
Recommended Dilution:	WB 1:2000, IF 1:100, FLOW 1:100
Reactivity:	Human, Mouse, Rat
Host:	Mouse
Isotype:	IgG1
Clonality:	Monoclonal
Immunogen:	Full length human recombinant protein of human LDLRAP1(NP_056442) produced in HEK293T cell.
Formulation:	PBS (pH 7.3) containing 1% BSA, 50% glycerol.
Concentration:	0.5 mg/ml
Purification:	Purified from mouse ascites fluids or tissue culture supernatant by affinity chromatography (protein A/G)
Conjugation:	HRP
Storage:	Store at -20°C as received.
Stability:	Stable for 12 months from date of receipt.
Predicted Protein Size:	33.7 kDa
Gene Name:	low density lipoprotein receptor adaptor protein 1
Database Link:	<a href="#">NP_056442</a> <a href="#">Entrez Gene 100017 Mouse</a> <a href="#">Entrez Gene 500564 Rat</a> <a href="#">Entrez Gene 26119 Human</a> <a href="#">Q5SW96</a>
Background:	The protein encoded by this gene is a cytosolic protein which contains a phosphotyrosine binding (PTD) domain. The PTD domain has been found to interact with the cytoplasmic tail of the LDL receptor. Mutations in this gene lead to LDL receptor malfunction and cause the disorder autosomal recessive hypercholesterolaemia. [provided by RefSeq, Jul 2008]
Synonyms:	ARH; ARH1; ARH2; FHCB1; FHCB2

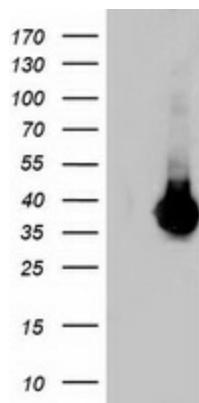


[View online »](#)

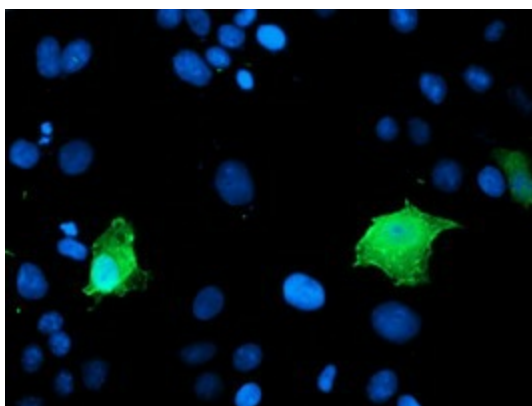
Protein Families: Druggable Genome

Protein Pathways: Endocytosis

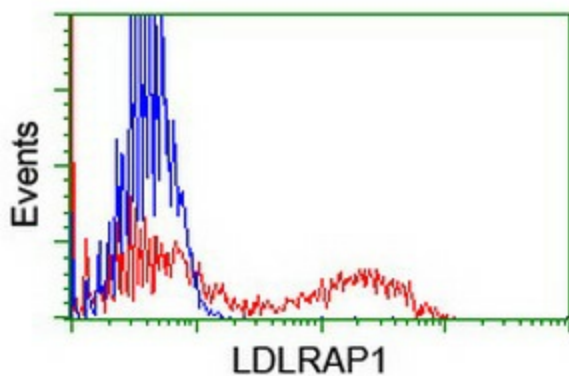
**Product images:**



HEK293T cells were transfected with the pCMV6-ENTRY control (Left lane) or pCMV6-ENTRY LDLRAP1 ([RC206643], Right lane) cDNA for 48 hrs and lysed. Equivalent amounts of cell lysates (5 ug per lane) were separated by SDS-PAGE and immunoblotted with anti-LDLRAP1. Positive lysates [LY414462] (100ug) and [LC414462] (20ug) can be purchased separately from OriGene.



Anti-LDLRAP1 mouse monoclonal antibody ([TA503851]) immunofluorescent staining of COS7 cells transiently transfected by pCMV6-ENTRY LDLRAP1 ([RC206643]).



HEK293T cells transfected with either [RC206643] overexpress plasmid (Red) or empty vector control plasmid (Blue) were immunostained by anti-LDLRAP1 antibody ([TA503851]), and then analyzed by flow cytometry.