

## Product datasheet for **TA503847S**

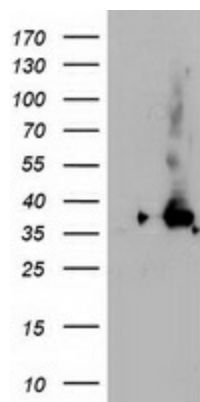
### NUDT18 Mouse Monoclonal Antibody [Clone ID: OTI5D7]

#### Product data:

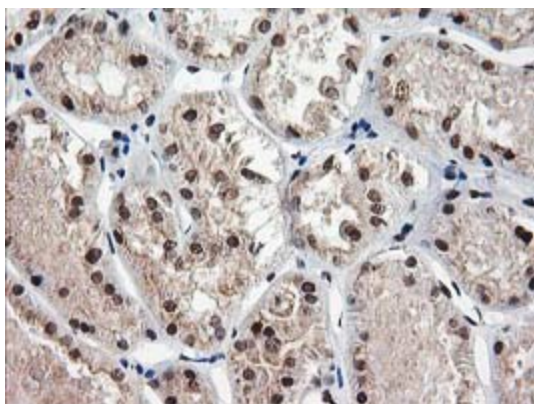
Product Type:	Primary Antibodies
Clone Name:	OTI5D7
Applications:	FC, IF, IHC, WB
Recommended Dilution:	WB 1:2000, IHC 1:150, IF 1:100, FLOW 1:100
Reactivity:	Human
Host:	Mouse
Isotype:	IgG1
Clonality:	Monoclonal
Immunogen:	Full length human recombinant protein of human NUDT18(NP_079091) produced in HEK293T cell.
Formulation:	PBS (pH 7.3) containing 1% BSA, 50% glycerol and 0.02% sodium azide.
Concentration:	0.55 mg/ml
Purification:	Purified from mouse ascites fluids or tissue culture supernatant by affinity chromatography (protein A/G)
Conjugation:	Unconjugated
Storage:	Store at -20°C as received.
Stability:	Stable for 12 months from date of receipt.
Predicted Protein Size:	35.3 kDa
Gene Name:	nudix hydrolase 18
Database Link:	<a href="#">NP_079091</a> <a href="#">Entrez Gene 79873 Human</a> <a href="#">Q6ZVK8</a>
Synonyms:	MTH3



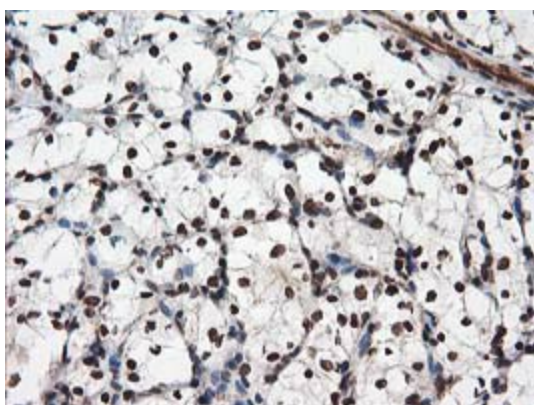
[View online »](#)

**Product images:**

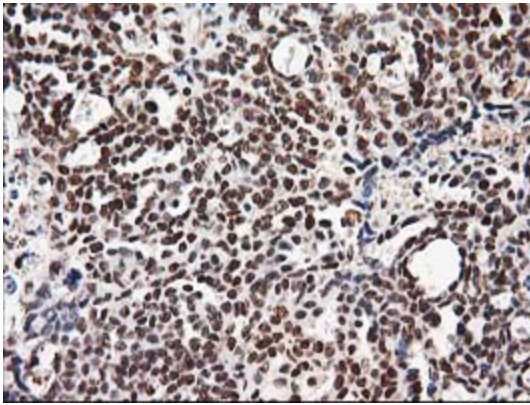
HEK293T cells were transfected with the pCMV6-ENTRY control (Cat# [PS100001], Left lane) or pCMV6-ENTRY NUDT18 (Cat# [RC204376], Right lane) cDNA for 48 hrs and lysed. Equivalent amounts of cell lysates (5 ug per lane) were separated by SDS-PAGE and immunoblotted with anti-NUDT18 (Cat# [TA503847]). Positive lysates [LY403033] (100ug) and [LC403033] (20ug) can be purchased separately from OriGene.



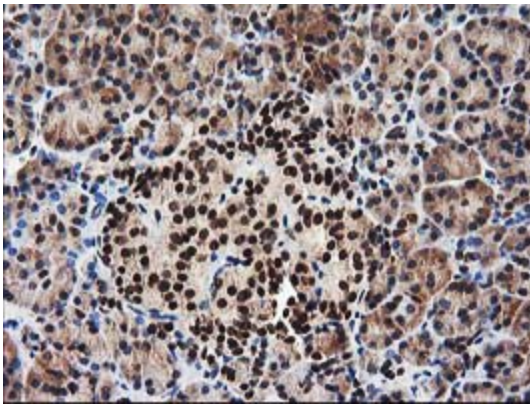
Immunohistochemical staining of paraffin-embedded Human Kidney tissue within the normal limits using anti-NUDT18 mouse monoclonal antibody. (Heat-induced epitope retrieval by 10mM citric buffer, pH6.0, 100°C for 10min, [TA503847])



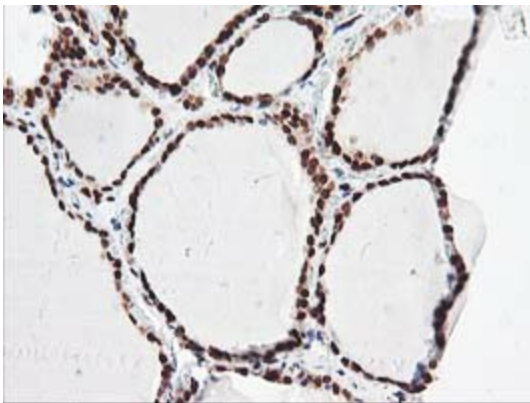
Immunohistochemical staining of paraffin-embedded Carcinoma of Human kidney tissue using anti-NUDT18 mouse monoclonal antibody. (Heat-induced epitope retrieval by 10mM citric buffer, pH6.0, 100°C for 10min, [TA503847])



Immunohistochemical staining of paraffin-embedded Adenocarcinoma of Human ovary tissue using anti-NUDT18 mouse monoclonal antibody. (Heat-induced epitope retrieval by 10mM citric buffer, pH6.0, 100°C for 10min, [TA503847])

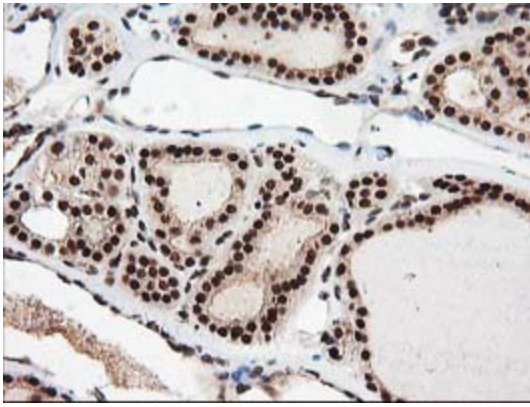


Immunohistochemical staining of paraffin-embedded Human pancreas tissue within the normal limits using anti-NUDT18 mouse monoclonal antibody. (Heat-induced epitope retrieval by 10mM citric buffer, pH6.0, 100°C for 10min, [TA503847])

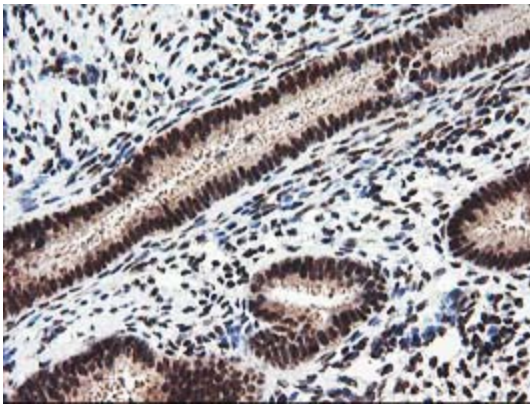


Immunohistochemical staining of paraffin-embedded Human thyroid tissue within the normal limits using anti-NUDT18 mouse monoclonal antibody. (Heat-induced epitope retrieval by 10mM citric buffer, pH6.0, 100°C for 10min, [TA503847])

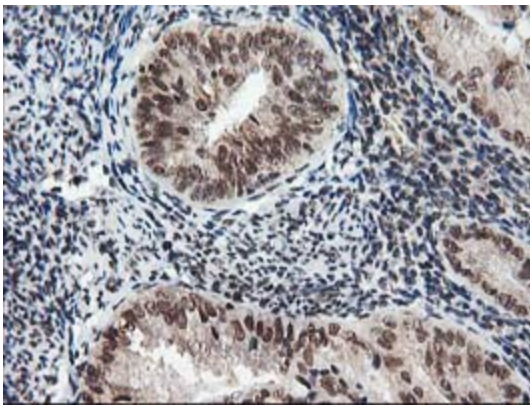




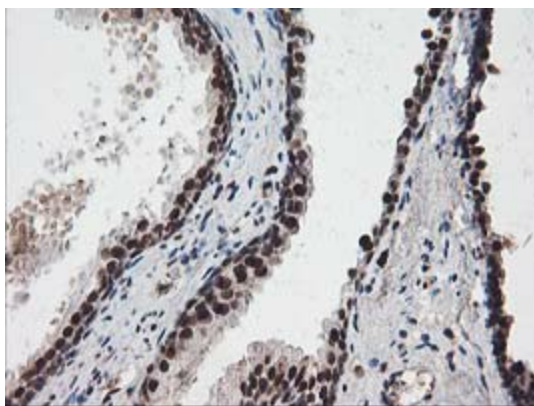
Immunohistochemical staining of paraffin-embedded Carcinoma of Human thyroid tissue using anti-NUDT18 mouse monoclonal antibody. (Heat-induced epitope retrieval by 10mM citric buffer, pH6.0, 100°C for 10min, [TA503847])



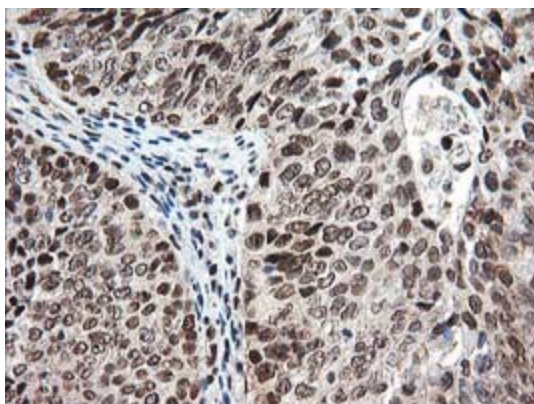
Immunohistochemical staining of paraffin-embedded Human endometrium tissue within the normal limits using anti-NUDT18 mouse monoclonal antibody. (Heat-induced epitope retrieval by 10mM citric buffer, pH6.0, 100°C for 10min, [TA503847])



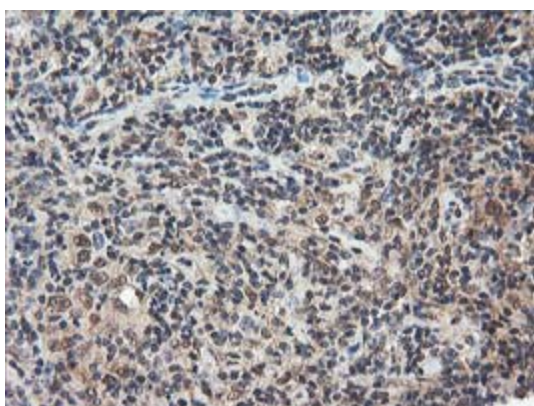
Immunohistochemical staining of paraffin-embedded Adenocarcinoma of Human endometrium tissue using anti-NUDT18 mouse monoclonal antibody. (Heat-induced epitope retrieval by 10mM citric buffer, pH6.0, 100°C for 10min, [TA503847])



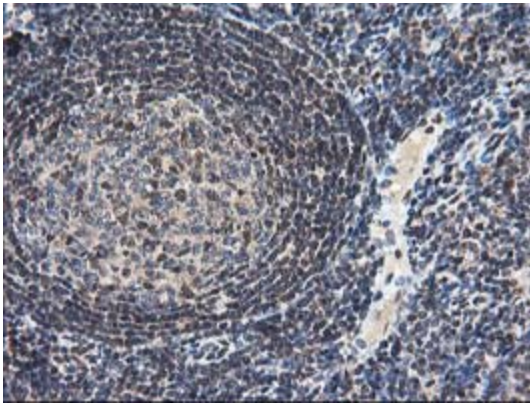
Immunohistochemical staining of paraffin-embedded Human prostate tissue within the normal limits using anti-NUDT18 mouse monoclonal antibody. (Heat-induced epitope retrieval by 10mM citric buffer, pH6.0, 100°C for 10min, [TA503847])



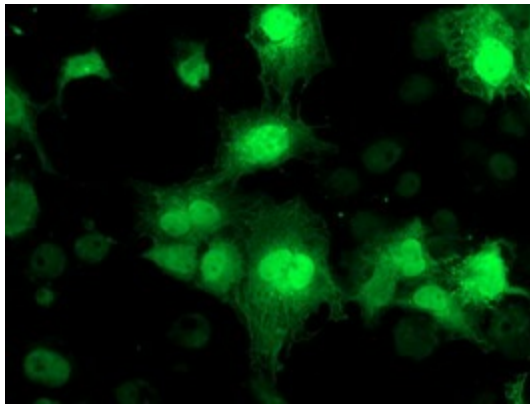
Immunohistochemical staining of paraffin-embedded Carcinoma of Human bladder tissue using anti-NUDT18 mouse monoclonal antibody. (Heat-induced epitope retrieval by 10mM citric buffer, pH6.0, 100°C for 10min, [TA503847])



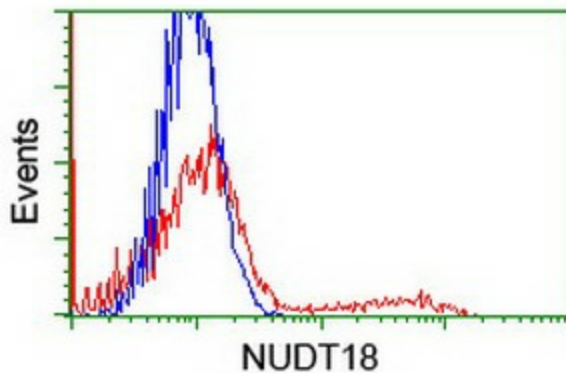
Immunohistochemical staining of paraffin-embedded Human Lymphoma tissue using anti-NUDT18 mouse monoclonal antibody. (Heat-induced epitope retrieval by 10mM citric buffer, pH6.0, 100°C for 10min, [TA503847])



Immunohistochemical staining of paraffin-embedded Human tonsil within the normal limits using anti-NUDT18 mouse monoclonal antibody. (Heat-induced epitope retrieval by 10mM citric buffer, pH6.0, 100°C for 10min, [TA503847])



Anti-NUDT18 mouse monoclonal antibody ([TA503847]) immunofluorescent staining of COS7 cells transiently transfected by pCMV6-ENTRY NUDT18 ([RC204376]).



HEK293T cells transfected with either [RC204376] overexpress plasmid (Red) or empty vector control plasmid (Blue) were immunostained by anti-NUDT18 antibody ([TA503847]), and then analyzed by flow cytometry.