

## Product datasheet for **TA503822S**

### Heme oxygenase 2 (HMOX2) Mouse Monoclonal Antibody [Clone ID: OTI1B4]

#### Product data:

Product Type:	Primary Antibodies
Clone Name:	OTI1B4
Applications:	IHC, WB
Recommended Dilution:	WB 1:2000, IHC 1:150
Reactivity:	Human, Mouse, Rat
Host:	Mouse
Isotype:	IgG1
Clonality:	Monoclonal
Immunogen:	Full length human recombinant protein of human HMOX2(NP_002125) produced in HEK293T cell.
Formulation:	PBS (pH 7.3) containing 1% BSA, 50% glycerol and 0.02% sodium azide.
Concentration:	1 mg/ml
Purification:	Purified from mouse ascites fluids or tissue culture supernatant by affinity chromatography (protein A/G)
Conjugation:	Unconjugated
Storage:	Store at -20°C as received.
Stability:	Stable for 12 months from date of receipt.
Predicted Protein Size:	35.9 kDa
Gene Name:	heme oxygenase 2
Database Link:	<a href="#">NP_002125</a> <a href="#">Entrez Gene 15369 Mouse</a> <a href="#">Entrez Gene 79239 Rat</a> <a href="#">Entrez Gene 3163 Human</a> <a href="#">P30519</a>



[View online »](#)

**Background:**

Heme oxygenase, an essential enzyme in heme catabolism, cleaves heme to form biliverdin, which is subsequently converted to bilirubin by biliverdin reductase, and carbon monoxide, a putative neurotransmitter. Heme oxygenase activity is induced by its substrate heme and by various nonheme substances. Heme oxygenase occurs as 2 isozymes, an inducible heme oxygenase-1 and a constitutive heme oxygenase-2. HMOX1 and HMOX2 belong to the heme oxygenase family. Alternative splice variants encoding the same protein have been identified at this locus. [provided by RefSeq]

**Synonyms:**

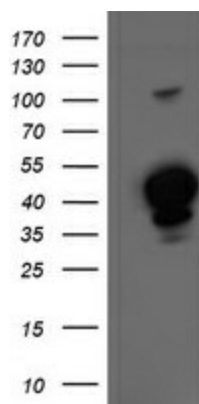
HO-2

**Protein Families:**

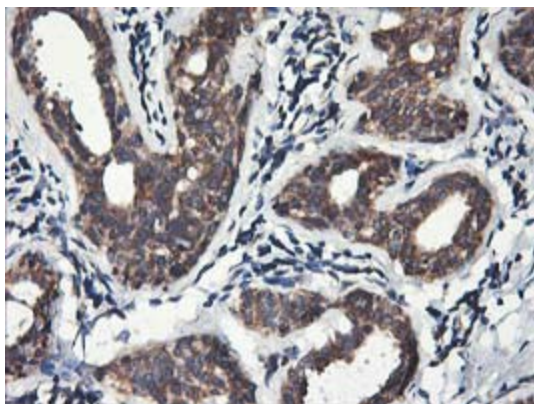
Transmembrane

**Protein Pathways:**

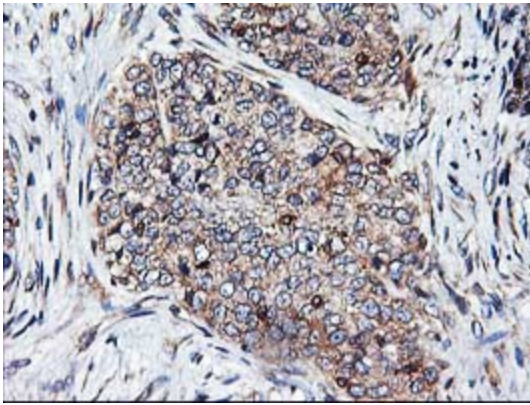
Porphyrin and chlorophyll metabolism

**Product images:**

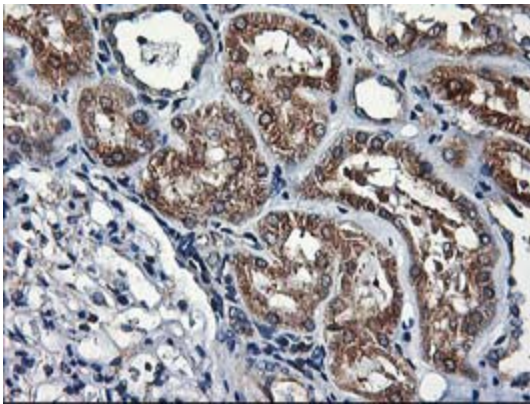
HEK293T cells were transfected with the pCMV6-ENTRY control (Left lane) or pCMV6-ENTRY HMOX2 ([RC201777], Right lane) cDNA for 48 hrs and lysed. Equivalent amounts of cell lysates (5 ug per lane) were separated by SDS-PAGE and immunoblotted with anti-HMOX2. Positive lysates [LY419512] (100ug) and [LC419512] (20ug) can be purchased separately from OriGene.



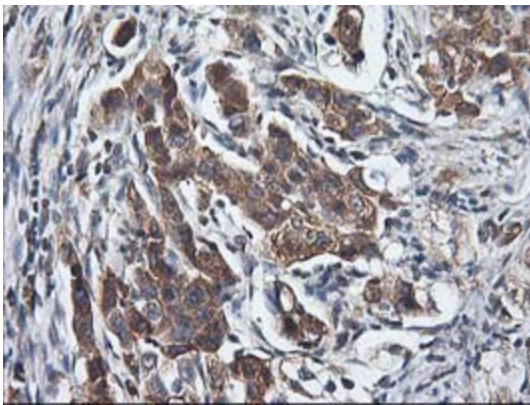
Immunohistochemical staining of paraffin-embedded Human breast tissue within the normal limits using anti-HMOX2 mouse monoclonal antibody. (Heat-induced epitope retrieval by 10mM citric buffer, pH6.0, 100°C for 10min, [TA503822])



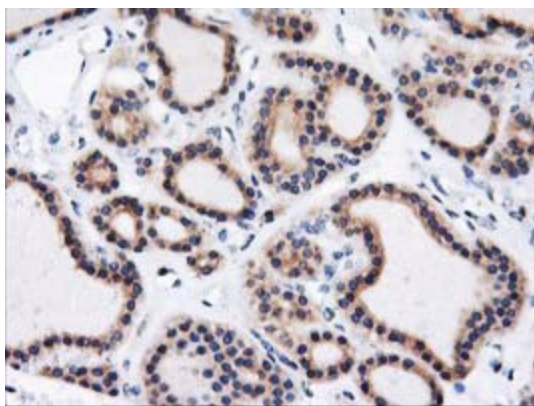
Immunohistochemical staining of paraffin-embedded Adenocarcinoma of Human breast tissue using anti-HMOX2 mouse monoclonal antibody. (Heat-induced epitope retrieval by 10mM citric buffer, pH6.0, 100°C for 10min, [TA503822])



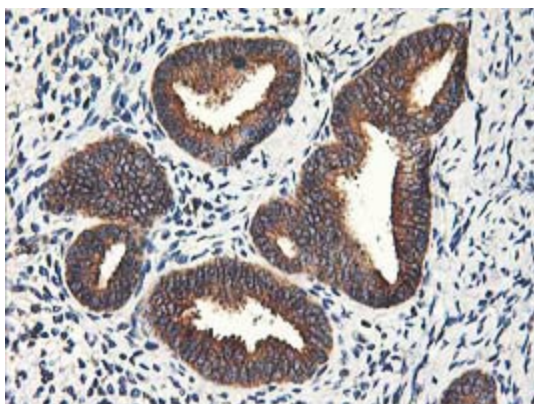
Immunohistochemical staining of paraffin-embedded Human Kidney tissue within the normal limits using anti-HMOX2 mouse monoclonal antibody. (Heat-induced epitope retrieval by 10mM citric buffer, pH6.0, 100°C for 10min, [TA503822])



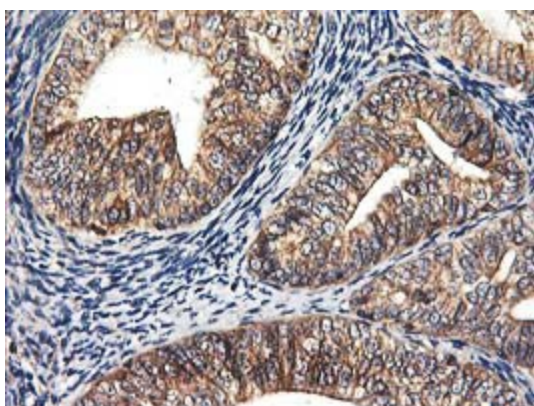
Immunohistochemical staining of paraffin-embedded Carcinoma of Human lung tissue using anti-HMOX2 mouse monoclonal antibody. (Heat-induced epitope retrieval by 10mM citric buffer, pH6.0, 100°C for 10min, [TA503822])



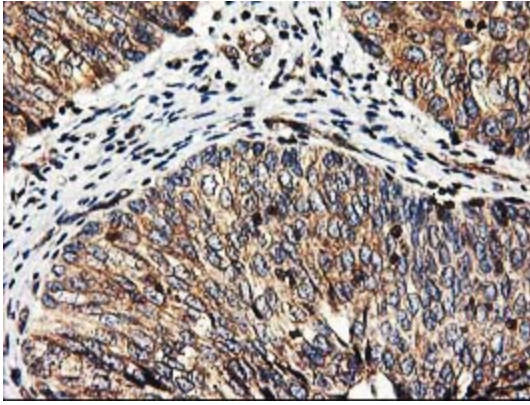
Immunohistochemical staining of paraffin-embedded Carcinoma of Human thyroid tissue using anti-HMOX2 mouse monoclonal antibody. (Heat-induced epitope retrieval by 10mM citric buffer, pH6.0, 100°C for 10min, [TA503822])



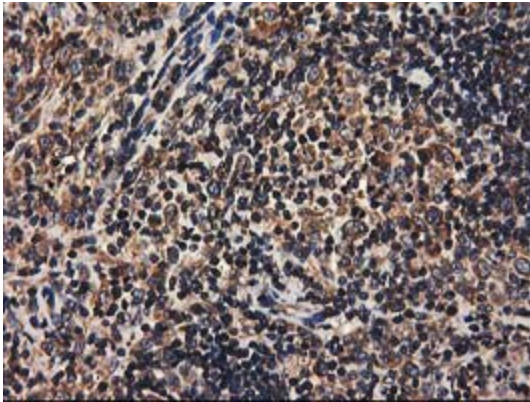
Immunohistochemical staining of paraffin-embedded Human endometrium tissue within the normal limits using anti-HMOX2 mouse monoclonal antibody. (Heat-induced epitope retrieval by 10mM citric buffer, pH6.0, 100°C for 10min, [TA503822])



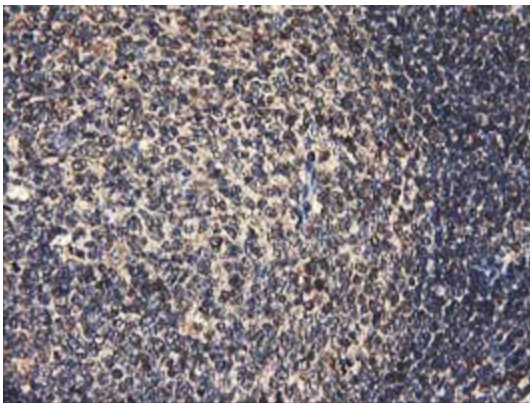
Immunohistochemical staining of paraffin-embedded Adenocarcinoma of Human endometrium tissue using anti-HMOX2 mouse monoclonal antibody. (Heat-induced epitope retrieval by 10mM citric buffer, pH6.0, 100°C for 10min, [TA503822])



Immunohistochemical staining of paraffin-embedded Carcinoma of Human bladder tissue using anti-HMOX2 mouse monoclonal antibody. (Heat-induced epitope retrieval by 10mM citric buffer, pH6.0, 100°C for 10min, [TA503822])



Immunohistochemical staining of paraffin-embedded Human lymphoma tissue using anti-HMOX2 mouse monoclonal antibody. (Heat-induced epitope retrieval by 10mM citric buffer, pH6.0, 100°C for 10min, [TA503822])



Immunohistochemical staining of paraffin-embedded Human tonsil within the normal limits using anti-HMOX2 mouse monoclonal antibody. (Heat-induced epitope retrieval by 10mM citric buffer, pH6.0, 100°C for 10min, [TA503822])