

## Product datasheet for **TA503815AM**

### WDR4 Mouse Monoclonal Antibody (Biotin conjugated) [Clone ID: OTI4G1]

#### Product data:

Product Type:	Primary Antibodies
Clone Name:	OTI4G1
Applications:	FC, IF, WB
Recommended Dilution:	WB 1:2000, IF 1:100, FLOW 1:100
Reactivity:	Human
Host:	Mouse
Isotype:	IgG1
Clonality:	Monoclonal
Immunogen:	Full length human recombinant protein of human WDR4(NP_387510) produced in HEK293T cell.
Formulation:	PBS (pH 7.3) containing 1% BSA, 50% glycerol and 0.02% sodium azide.
Concentration:	0.5 mg/ml
Purification:	Purified from mouse ascites fluids or tissue culture supernatant by affinity chromatography (protein A/G)
Conjugation:	Biotin
Storage:	Store at -20°C as received.
Stability:	Stable for 12 months from date of receipt.
Predicted Protein Size:	45.3 kDa
Gene Name:	WD repeat domain 4
Database Link:	<a href="#">NP_387510</a> <a href="#">Entrez Gene 10785 Human</a> <a href="#">P57081</a>

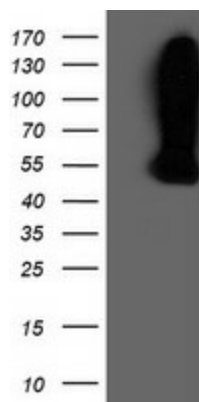
[View online »](#)

**Background:**

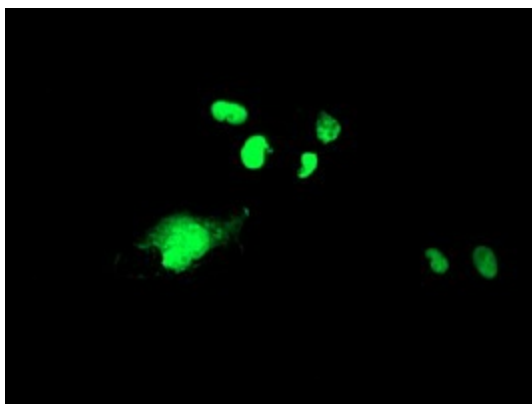
This gene encodes a member of the WD repeat protein family. WD repeats are minimally conserved regions of approximately 40 amino acids typically bracketed by gly-his and trp-aspartate (GH-WD), which may facilitate formation of heterotrimeric or multiprotein complexes. Members of this family are involved in a variety of cellular processes, including cell cycle progression, signal transduction, apoptosis, and gene regulation. This gene is excluded as a candidate for a form of nonsyndromic deafness (DFNB10), but is still a candidate for other disorders mapped to 21q22.3 as well as for the development of Down syndrome phenotypes. Alternatively spliced transcript variants have been found for this gene. [provided by RefSeq, May 2012]

**Synonyms:**

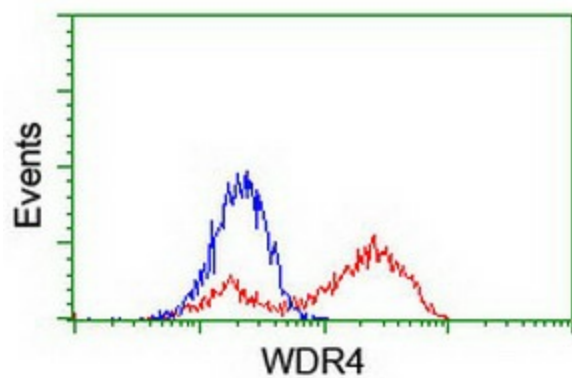
TRM82; TRMT82

**Product images:**


HEK293T cells were transfected with the pCMV6-ENTRY control (Cat# [PS100001], Left lane) or pCMV6-ENTRY WDR4 (Cat# [RC217569], Right lane) cDNA for 48 hrs and lysed. Equivalent amounts of cell lysates (5 ug per lane) were separated by SDS-PAGE and immunoblotted with anti-WDR4 (Cat# [TA503815]). Positive lysates [LY403257] (100ug) and [LC403257] (20ug) can be purchased separately from OriGene.



Anti-WDR4 mouse monoclonal antibody ([TA503815]) immunofluorescent staining of COS7 cells transiently transfected by pCMV6-ENTRY WDR4 ([RC217569]).



HEK293T cells transfected with either [RC217569] overexpress plasmid (Red) or empty vector control plasmid (Blue) were immunostained by anti-WDR4 antibody ([TA503815]), and then analyzed by flow cytometry.