

Product datasheet for **TA503809AM**

RbAp46 (RBBP7) Mouse Monoclonal Antibody (Biotin conjugated) [Clone ID: OTI3A12]

Product data:

Product Type:	Primary Antibodies
Clone Name:	OTI3A12
Applications:	IF, WB
Recommended Dilution:	WB 1:100, IF 1:100
Reactivity:	Human, Mouse, Rat
Host:	Mouse
Isotype:	IgG1
Clonality:	Monoclonal
Immunogen:	Full length human recombinant protein of human RBBP7(NP_002884) produced in HEK293T cell.
Formulation:	PBS (pH 7.3) containing 1% BSA, 50% glycerol and 0.02% sodium azide.
Concentration:	0.5 mg/ml
Purification:	Purified from mouse ascites fluids or tissue culture supernatant by affinity chromatography (protein A/G)
Conjugation:	Biotin
Storage:	Store at -20°C as received.
Stability:	Stable for 12 months from date of receipt.
Predicted Protein Size:	47.6 kDa
Gene Name:	RB binding protein 7, chromatin remodeling factor
Database Link:	NP_002884 Entrez Gene 83712 Rat Entrez Gene 245688 Mouse Entrez Gene 5931 Human Q16576



[View online »](#)

Background:

This protein is a ubiquitously expressed nuclear protein and belongs to a highly conserved subfamily of WD-repeat proteins. It is found among several proteins that binds directly to retinoblastoma protein, which regulates cell proliferation. The encoded protein is found in many histone deacetylase complexes, including mSin3 co-repressor complex. It is also present in protein complexes involved in chromatin assembly. This protein can interact with BRCA1 tumor-suppressor gene and may have a role in the regulation of cell proliferation and differentiation. Two transcript variants encoding different isoforms have been found for this gene. [provided by RefSeq]

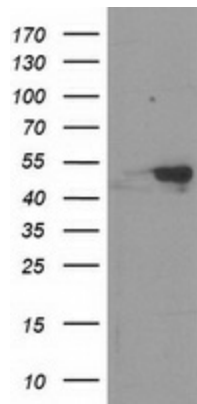
Synonyms:

RbAp46

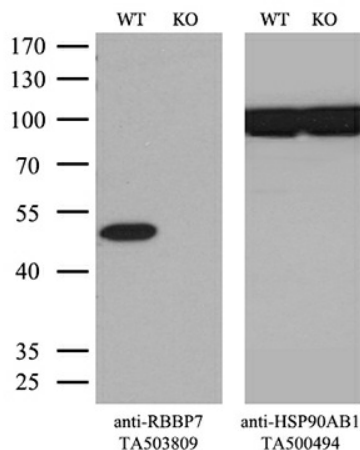
Protein Families:

Druggable Genome

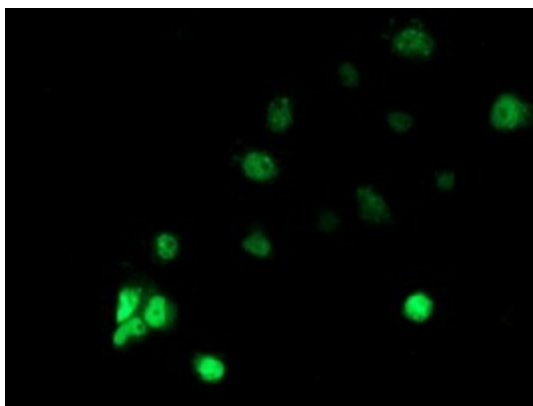
Product images:



HEK293T cells were transfected with the pCMV6-ENTRY control (Left lane) or pCMV6-ENTRY RBBP7 [RC217969], Right lane) cDNA for 48 hrs and lysed. Equivalent amounts of cell lysates (5 ug per lane) were separated by SDS-PAGE and immunoblotted with anti-RBBP7. Positive lysates [LY419038] (100ug) and [LC419038] (20ug) can be purchased separately from OriGene.



Equivalent amounts of cell lysates (10 ug per lane) of wild-type HeLa cells (WT, Cat# LC810HELA) and RBBP7-Knockout HeLa cells (KO, Cat# [LC810200]) were separated by SDS-PAGE and immunoblotted with anti-RBBP7 monoclonal antibody [TA503809]. Then the blotted membrane was stripped and reprobed with anti-HSP90AB1 antibody ([TA500494]) as a loading control (1:500).



Anti-RBBP7 mouse monoclonal antibody ([TA503809]) immunofluorescent staining of COS7 cells transiently transfected by pCMV6-ENTRY RBBP7 ([RC217969]).