

## Product datasheet for **TA503803BM**

### **FAM119A (METTL21A) Mouse Monoclonal Antibody (HRP conjugated) [Clone ID: OTI2D3]**

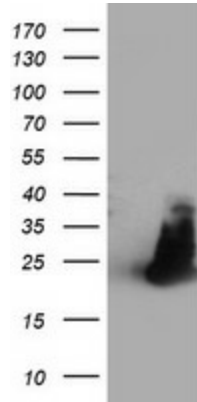
#### **Product data:**

Product Type:	Primary Antibodies
Clone Name:	OTI2D3
Applications:	IF, WB
Recommended Dilution:	WB 1:2000, IF 1:100
Reactivity:	Human, Mouse, Rat
Host:	Mouse
Isotype:	IgG2b
Clonality:	Monoclonal
Immunogen:	Full length human recombinant protein of human FAM119A(NP_660323) produced in HEK293T cell.
Formulation:	PBS (pH 7.3) containing 1% BSA, 50% glycerol.
Concentration:	0.5 mg/ml
Purification:	Purified from mouse ascites fluids or tissue culture supernatant by affinity chromatography (protein A/G)
Conjugation:	HRP
Storage:	Store at -20°C as received.
Stability:	Stable for 12 months from date of receipt.
Predicted Protein Size:	24.4 kDa
Gene Name:	methyltransferase 21A, HSPA lysine
Database Link:	<a href="#">NP_660323</a> <a href="#">Entrez Gene 67099 Mouse</a> <a href="#">Entrez Gene 102553119 Rat</a> <a href="#">Entrez Gene 151194 Human</a> <a href="#">Q8WXB1</a>
Synonyms:	FAM119A; HCA557b; HSPA-KMT

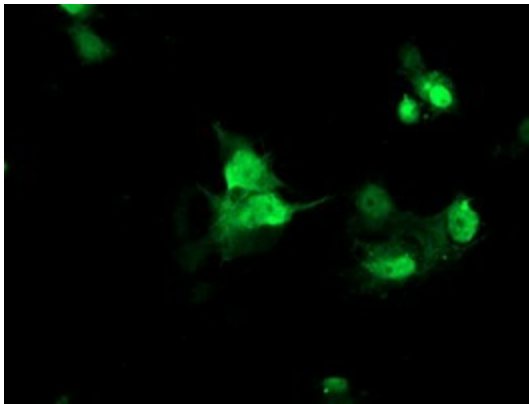


[View online »](#)

**Product images:**



HEK293T cells were transfected with the pCMV6-ENTRY control (Left lane) or pCMV6-ENTRY FAM119A ([RC207629], Right lane) cDNA for 48 hrs and lysed. Equivalent amounts of cell lysates (5 ug per lane) were separated by SDS-PAGE and immunoblotted with anti-FAM119A. Positive lysates [LY408004] (100ug) and [LC408004] (20ug) can be purchased separately from OriGene.



Anti-FAM119A mouse monoclonal antibody ([TA503803]) immunofluorescent staining of COS7 cells transiently transfected by pCMV6-ENTRY FAM119A ([RC207629]).