

Product datasheet for **TA503798BM**

ALS2CR1 (NIF3L1) Mouse Monoclonal Antibody (HRP conjugated) [Clone ID: OTI4B5]

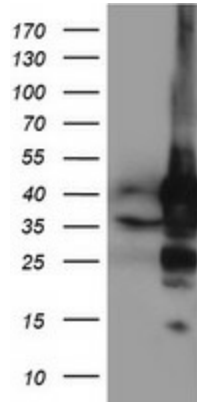
Product data:

Product Type:	Primary Antibodies
Clone Name:	OTI4B5
Applications:	IHC, WB
Recommended Dilution:	WB 1:2000, IHC 1:150
Reactivity:	Human, Rat
Host:	Mouse
Isotype:	IgG1
Clonality:	Monoclonal
Immunogen:	Full length human recombinant protein of human NIF3L1(NP_068596) produced in HEK293T cell.
Formulation:	PBS (pH 7.3) containing 1% BSA, 50% glycerol.
Concentration:	0.5 mg/ml
Purification:	Purified from mouse ascites fluids or tissue culture supernatant by affinity chromatography (protein A/G)
Conjugation:	HRP
Storage:	Store at -20°C as received.
Stability:	Stable for 12 months from date of receipt.
Predicted Protein Size:	38.8 kDa
Gene Name:	NGG1 interacting factor 3 like 1
Database Link:	NP_068596 Entrez Gene 301431 Rat Entrez Gene 60491 Human Q9GZT8
Synonyms:	ALS2CR1; CALS-7; MDS015

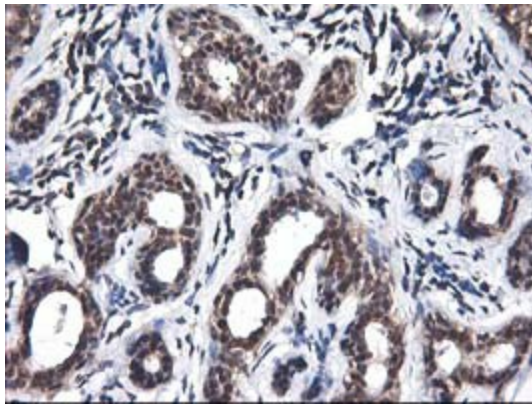


[View online »](#)

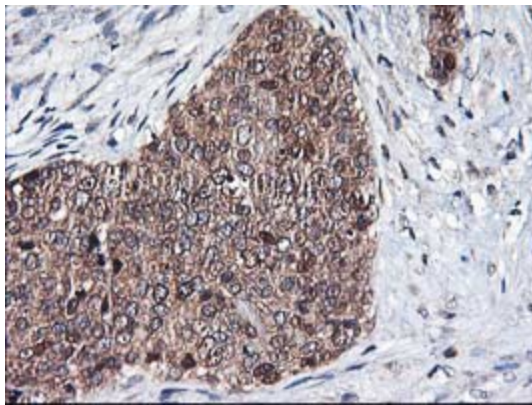
Product images:



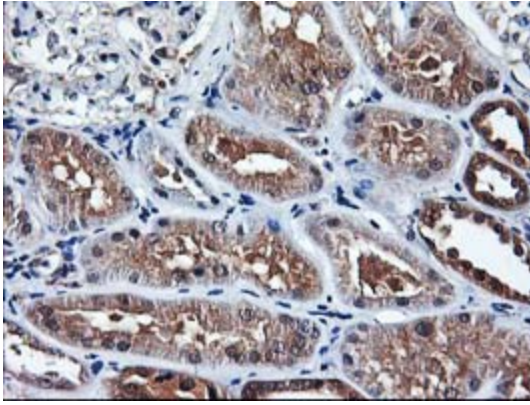
HEK293T cells were transfected with the pCMV6-ENTRY control (Left lane) or pCMV6-ENTRY NIF3L1 ([RC200827], Right lane) cDNA for 48 hrs and lysed. Equivalent amounts of cell lysates (5 ug per lane) were separated by SDS-PAGE and immunoblotted with anti-NIF3L1. Positive lysates [LY411906] (100ug) and [LC411906] (20ug) can be purchased separately from OriGene.



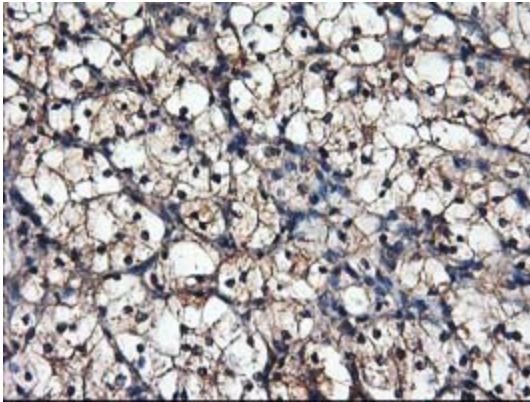
Immunohistochemical staining of paraffin-embedded Human breast tissue within the normal limits using anti-NIF3L1 mouse monoclonal antibody. (Heat-induced epitope retrieval by 10mM citric buffer, pH6.0, 100°C for 10min, [TA503798])



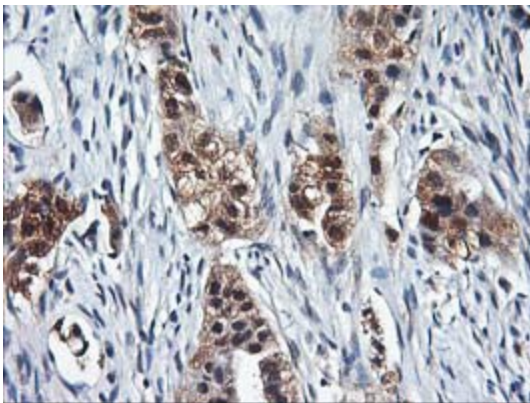
Immunohistochemical staining of paraffin-embedded Adenocarcinoma of Human breast tissue using anti-NIF3L1 mouse monoclonal antibody. (Heat-induced epitope retrieval by 10mM citric buffer, pH6.0, 100°C for 10min, [TA503798])



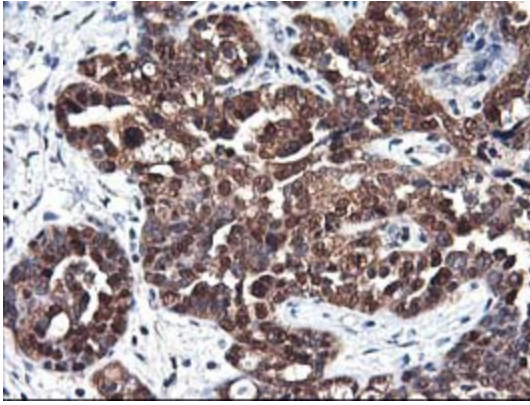
Immunohistochemical staining of paraffin-embedded Human Kidney tissue within the normal limits using anti-NIF3L1 mouse monoclonal antibody. (Heat-induced epitope retrieval by 10mM citric buffer, pH6.0, 100°C for 10min, [TA503798])



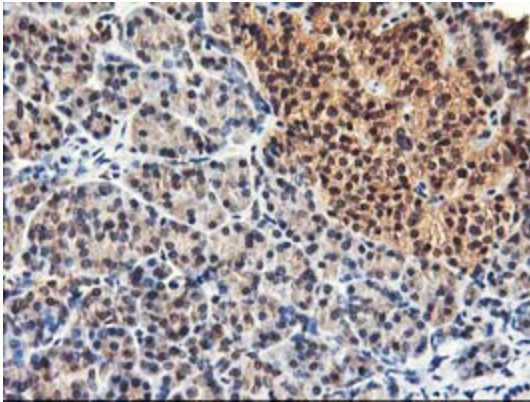
Immunohistochemical staining of paraffin-embedded Carcinoma of Human kidney tissue using anti-NIF3L1 mouse monoclonal antibody. (Heat-induced epitope retrieval by 10mM citric buffer, pH6.0, 100°C for 10min, [TA503798])



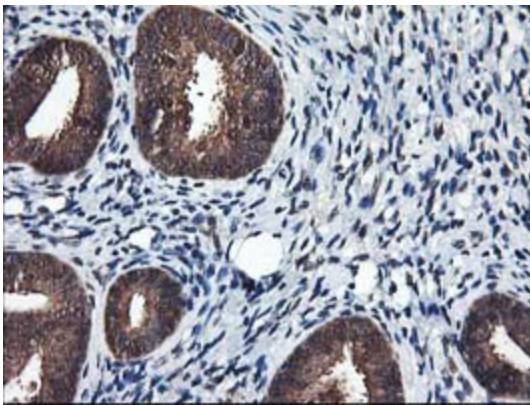
Immunohistochemical staining of paraffin-embedded Carcinoma of Human lung tissue using anti-NIF3L1 mouse monoclonal antibody. (Heat-induced epitope retrieval by 10mM citric buffer, pH6.0, 100°C for 10min, [TA503798])



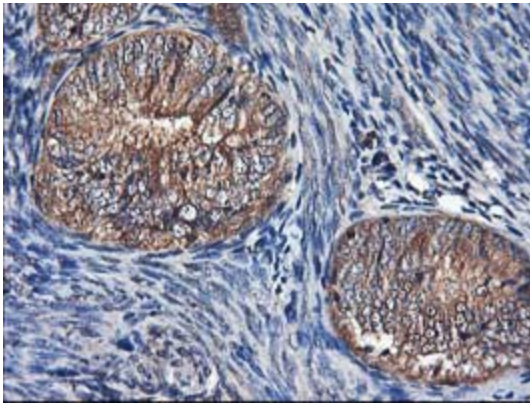
Immunohistochemical staining of paraffin-embedded Adenocarcinoma of Human ovary tissue using anti-NIF3L1 mouse monoclonal antibody. (Heat-induced epitope retrieval by 10mM citric buffer, pH6.0, 100°C for 10min, [TA503798])



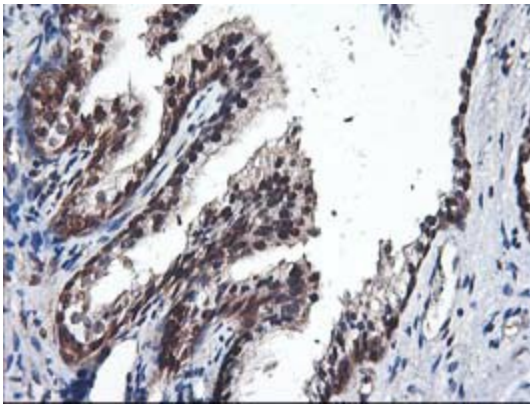
Immunohistochemical staining of paraffin-embedded Human pancreas tissue within the normal limits using anti-NIF3L1 mouse monoclonal antibody. (Heat-induced epitope retrieval by 10mM citric buffer, pH6.0, 100°C for 10min, [TA503798])



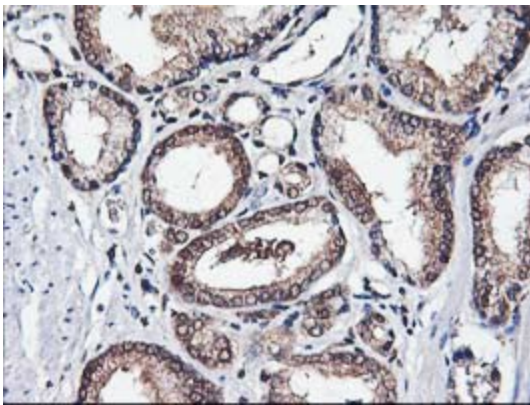
Immunohistochemical staining of paraffin-embedded Human endometrium tissue within the normal limits using anti-NIF3L1 mouse monoclonal antibody. (Heat-induced epitope retrieval by 10mM citric buffer, pH6.0, 100°C for 10min, [TA503798])



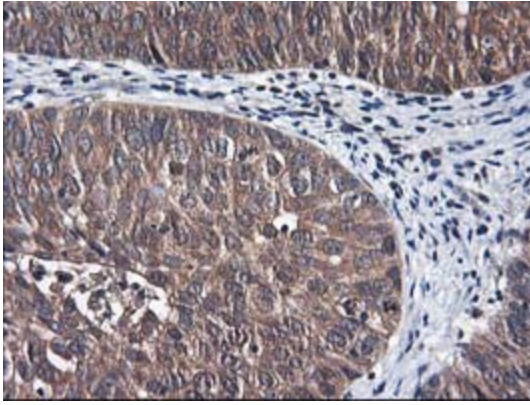
Immunohistochemical staining of paraffin-embedded Adenocarcinoma of Human endometrium tissue using anti-NIF3L1 mouse monoclonal antibody. (Heat-induced epitope retrieval by 10mM citric buffer, pH6.0, 100°C for 10min, [TA503798])



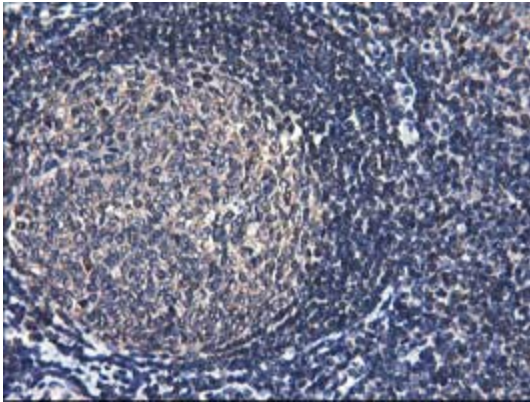
Immunohistochemical staining of paraffin-embedded Human prostate tissue within the normal limits using anti-NIF3L1 mouse monoclonal antibody. (Heat-induced epitope retrieval by 10mM citric buffer, pH6.0, 100°C for 10min, [TA503798])



Immunohistochemical staining of paraffin-embedded Carcinoma of Human prostate tissue using anti-NIF3L1 mouse monoclonal antibody. (Heat-induced epitope retrieval by 10mM citric buffer, pH6.0, 100°C for 10min, [TA503798])



Immunohistochemical staining of paraffin-embedded Carcinoma of Human bladder tissue using anti-NIF3L1 mouse monoclonal antibody. (Heat-induced epitope retrieval by 10mM citric buffer, pH6.0, 100°C for 10min, [TA503798])



Immunohistochemical staining of paraffin-embedded Human tonsil within the normal limits using anti-NIF3L1 mouse monoclonal antibody. (Heat-induced epitope retrieval by 10mM citric buffer, pH6.0, 100°C for 10min, [TA503798])