

Product datasheet for **TA503791BM**

Lipoprotein lipase (LPL) Mouse Monoclonal Antibody (HRP conjugated) [Clone ID: OTI6A10]

Product data:

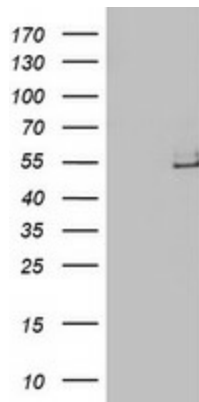
Product Type:	Primary Antibodies
Clone Name:	OTI6A10
Applications:	IF, IHC, WB
Recommended Dilution:	WB 1:500~2000, IHC 1:150, IF 1:100
Reactivity:	Human, Mouse, Rat
Host:	Mouse
Isotype:	IgG1
Clonality:	Monoclonal
Immunogen:	Human recombinant protein fragment corresponding to amino acids 28-475 of human LPL(NP_000228) produced in HEK293T cell.
Formulation:	PBS (pH 7.3) containing 1% BSA, 50% glycerol.
Concentration:	0.5 mg/ml
Purification:	Purified from mouse ascites fluids or tissue culture supernatant by affinity chromatography (protein A/G)
Conjugation:	HRP
Storage:	Store at -20°C as received.
Stability:	Stable for 12 months from date of receipt.
Predicted Protein Size:	50.3 kDa
Gene Name:	lipoprotein lipase
Database Link:	NP_000228 Entrez Gene 16956 Mouse Entrez Gene 24539 Rat Entrez Gene 4023 Human P06858
Background:	LPL encodes lipoprotein lipase, which is expressed in heart, muscle, and adipose tissue. LPL functions as a homodimer, and has the dual functions of triglyceride hydrolase and ligand/bridging factor for receptor-mediated lipoprotein uptake. Severe mutations that cause LPL deficiency result in type I hyperlipoproteinemia, while less extreme mutations in LPL are linked to many disorders of lipoprotein metabolism. [provided by RefSeq]



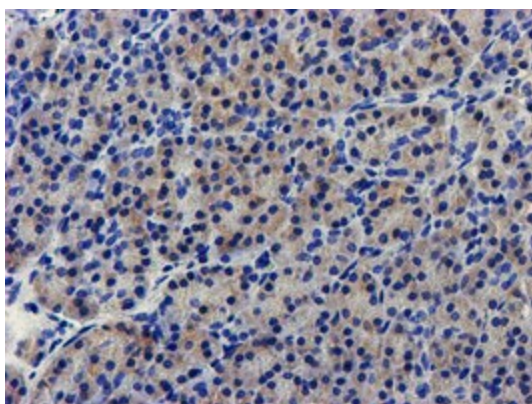
[View online »](#)

Synonyms: HDLCQ11; LIPD
Protein Families: Druggable Genome
Protein Pathways: Alzheimer's disease, Glycerolipid metabolism, PPAR signaling pathway

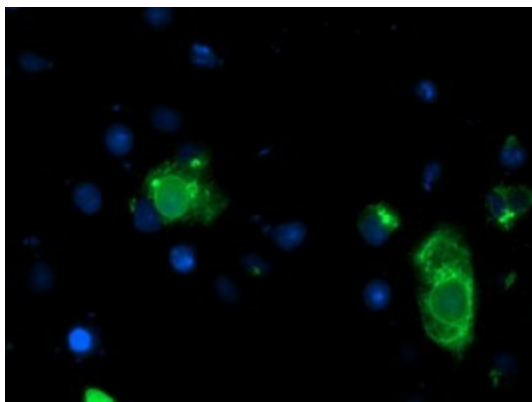
Product images:



HEK293T cells were transfected with the pCMV6-ENTRY control (Left lane) or pCMV6-ENTRY LPL ([RC203766], Right lane) cDNA for 48 hrs and lysed. Equivalent amounts of cell lysates (5 ug per lane) were separated by SDS-PAGE and immunoblotted with anti-LPL. Positive lysates [LY400089] (100ug) and [LC400089] (20ug) can be purchased separately from OriGene.



Immunohistochemical staining of paraffin-embedded Human pancreas tissue within the normal limits using anti-LPL mouse monoclonal antibody. (Heat-induced epitope retrieval by 10mM citric buffer, pH6.0, 100°C for 10min, [TA503791])



Anti-LPL mouse monoclonal antibody ([TA503791]) immunofluorescent staining of COS7 cells transiently transfected by pCMV6-ENTRY LPL ([RC203766]).