

## Product datasheet for **TA503788BM**

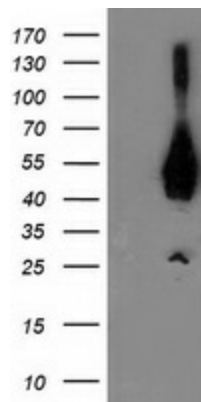
### ASCC1 Mouse Monoclonal Antibody (HRP conjugated) [Clone ID: OTI1H10]

#### Product data:

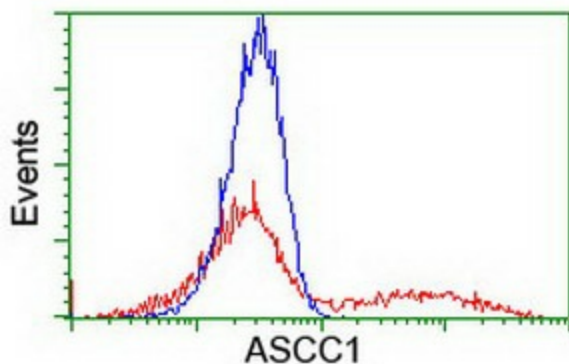
|                         |   |
|-------------------------|---|
| Product Type:           | Primary Antibodies  |
| Clone Name:             | OTI1H10   |
| Applications:           | FC, WB  |
| Recommended Dilution:   | WB 1:2000, FLOW 1:100   |
| Reactivity:             | Human, Mouse, Rat   |
| Host:                   | Mouse   |
| Isotype:                | IgG1  |
| Clonality:              | Monoclonal  |
| Immunogen:              | Full length human recombinant protein of human ASCC1(NP_057031) produced in HEK293T cell.   |
| Formulation:            | PBS (pH 7.3) containing 1% BSA, 50% glycerol.   |
| Concentration:          | 0.5 mg/ml   |
| Purification:           | Purified from mouse ascites fluids or tissue culture supernatant by affinity chromatography (protein A/G)   |
| Conjugation:            | HRP   |
| Storage:                | Store at -20°C as received.   |
| Stability:              | Stable for 12 months from date of receipt.  |
| Predicted Protein Size: | 41 kDa  |
| Gene Name:              | activating signal cointegrator 1 complex subunit 1  |
| Database Link:          | <a href="#">NP_057031</a><br><a href="#">Entrez Gene 69090 Mouse</a> <a href="#">Entrez Gene 294512 Rat</a> <a href="#">Entrez Gene 51008 Human</a><br><a href="#">Q8N9N2</a> |
| Synonyms:               | ASC1p50; CGI-18; RP11-150D20.4  |



[View online »](#)

**Product images:**

HEK293T cells were transfected with the pCMV6-ENTRY control (Left lane) or pCMV6-ENTRY ASCC1 ([RC201872], Right lane) cDNA for 48 hrs and lysed. Equivalent amounts of cell lysates (5 ug per lane) were separated by SDS-PAGE and immunoblotted with anti-ASCC1. Positive lysates [LY414300] (100ug) and [LC414300] (20ug) can be purchased separately from OriGene.



HEK293T cells transfected with either [RC201872] overexpress plasmid (Red) or empty vector control plasmid (Blue) were immunostained by anti-ASCC1 antibody ([TA503788]), and then analyzed by flow cytometry.