

Product datasheet for **TA503780BM**

katanin p80 (KATNB1) Mouse Monoclonal Antibody (HRP conjugated) [Clone ID: OTI5C4]

Product data:

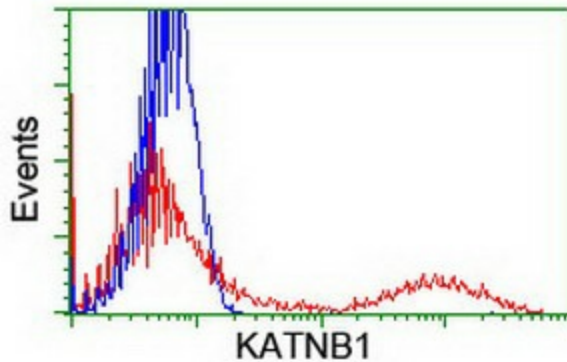
Product Type:	Primary Antibodies
Clone Name:	OTI5C4
Applications:	FC, IF, IHC, WB
Recommended Dilution:	WB 1:2000, IHC 1:150, IF 1:100, FLOW 1:100
Reactivity:	Human, Mouse, Rat
Host:	Mouse
Isotype:	IgG1
Clonality:	Monoclonal
Immunogen:	Full length human recombinant protein of human KATNB1(NP_005877) produced in HEK293T cell.
Formulation:	PBS (pH 7.3) containing 1% BSA, 50% glycerol.
Concentration:	0.5 mg/ml
Purification:	Purified from mouse ascites fluids or tissue culture supernatant by affinity chromatography (protein A/G)
Conjugation:	HRP
Storage:	Store at -20°C as received.
Stability:	Stable for 12 months from date of receipt.
Predicted Protein Size:	72.2 kDa
Gene Name:	katanin regulatory subunit B1
Database Link:	NP_005877 Entrez Gene 10300 Human Q9BVA0
Background:	Microtubules, polymers of alpha and beta tubulin subunits, form the mitotic spindle of a dividing cell and help to organize membranous organelles during interphase. Katanin is a heterodimer that consists of a 60 kDa ATPase (p60 subunit A 1) and an 80 kDa accessory protein (p80 subunit B 1). The p60 subunit acts to sever and disassemble microtubules, while the p80 subunit targets the enzyme to the centrosome. Katanin is a member of the AAA family of ATPases. [provided by RefSeq]



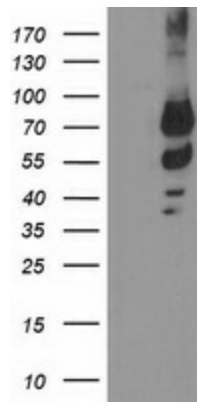
[View online »](#)

Synonyms: KAT; LIS6

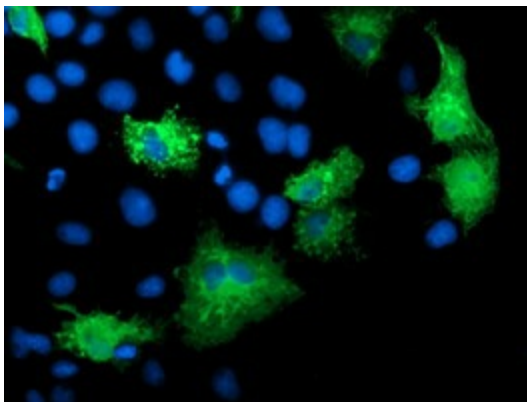
Product images:



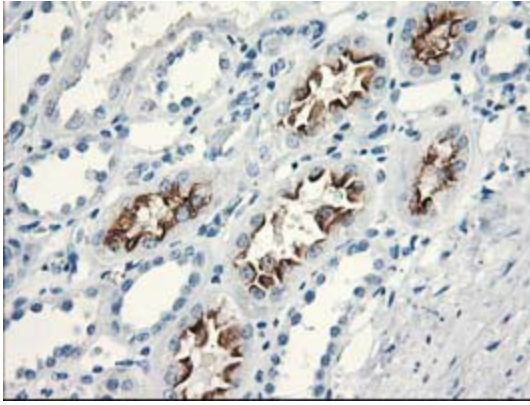
HEK293T cells transfected with either [RC201852] overexpress plasmid (Red) or empty vector control plasmid (Blue) were immunostained by anti-KATNB1 antibody ([TA503780]), and then analyzed by flow cytometry.



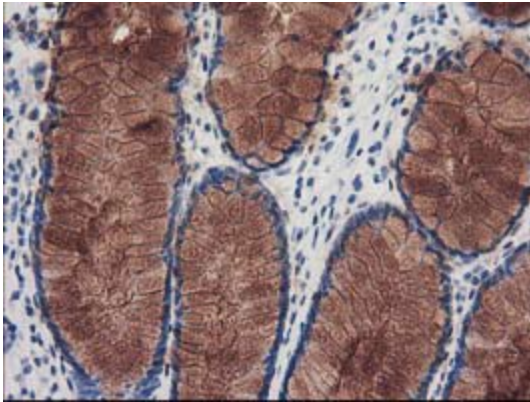
HEK293T cells were transfected with the pCMV6-ENTRY control (Cat# [PS100001], Left lane) or pCMV6-ENTRY KATNB1 (Cat# [RC201852], Right lane) cDNA for 48 hrs and lysed. Equivalent amounts of cell lysates (5 ug per lane) were separated by SDS-PAGE and immunoblotted with anti-KATNB1(Cat# [TA503780]). Positive lysates [LY417004] (100ug) and [LC417004] (20ug) can be purchased separately from OriGene.



Anti-KATNB1 mouse monoclonal antibody ([TA503780]) immunofluorescent staining of COS7 cells transiently transfected by pCMV6-ENTRY KATNB1 ([RC201852]).



Immunohistochemical staining of paraffin-embedded Human Kidney tissue within the normal limits using anti-KATNB1 mouse monoclonal antibody. (Heat-induced epitope retrieval by 10mM citric buffer, pH6.0, 100°C for 10min, [TA503780])



Immunohistochemical staining of paraffin-embedded Human colon tissue within the normal limits using anti-KATNB1 mouse monoclonal antibody. (Heat-induced epitope retrieval by 10mM citric buffer, pH6.0, 100°C for 10min, [TA503780])