

## Product datasheet for **TA503779BM**

### LXN Mouse Monoclonal Antibody (HRP conjugated) [Clone ID: OTI1E10]

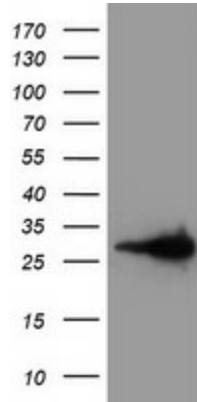
#### Product data:

Product Type:	Primary Antibodies
Clone Name:	OTI1E10
Applications:	FC, IHC, WB
Recommended Dilution:	WB 1:2000, IHC 1:150, FLOW 1:100
Reactivity:	Human, Mouse
Host:	Mouse
Isotype:	IgG1
Clonality:	Monoclonal
Immunogen:	Full length human recombinant protein of human LXN(NP_064554) produced in HEK293T cell.
Formulation:	PBS (pH 7.3) containing 1% BSA, 50% glycerol.
Concentration:	0.5 mg/ml
Purification:	Purified from mouse ascites fluids or tissue culture supernatant by affinity chromatography (protein A/G)
Conjugation:	HRP
Storage:	Store at -20°C as received.
Stability:	Stable for 12 months from date of receipt.
Predicted Protein Size:	25.6 kDa
Gene Name:	latexin
Database Link:	<a href="#">NP_064554</a> <a href="#">Entrez Gene 17035 Mouse</a> <a href="#">Entrez Gene 56925 Human</a> <a href="#">Q9BS40</a>
Background:	This gene encodes the only known protein inhibitor of zinc-dependent metalloproteinases. [provided by RefSeq]
Synonyms:	ECl; TCl

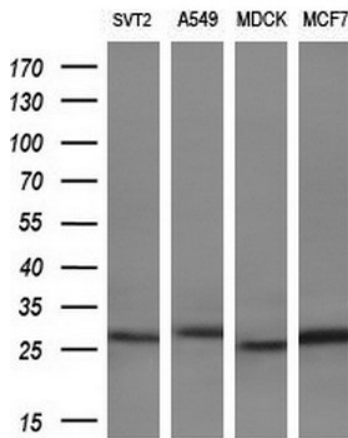


[View online »](#)

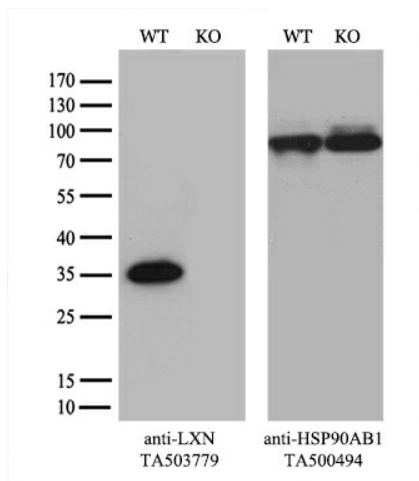
**Product images:**



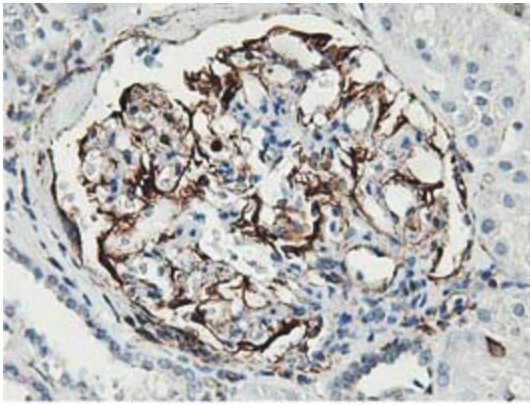
HEK293T cells were transfected with the pCMV6-ENTRY control (Cat# [PS100001], Left lane) or pCMV6-ENTRY LXN (Cat# [RC202769], Right lane) cDNA for 48 hrs and lysed. Equivalent amounts of cell lysates (5 ug per lane) were separated by SDS-PAGE and immunoblotted with anti-LXN (Cat# [TA503779]). Positive lysates [LY412596] (100ug) and [LC412596] (20ug) can be purchased separately from OriGene.



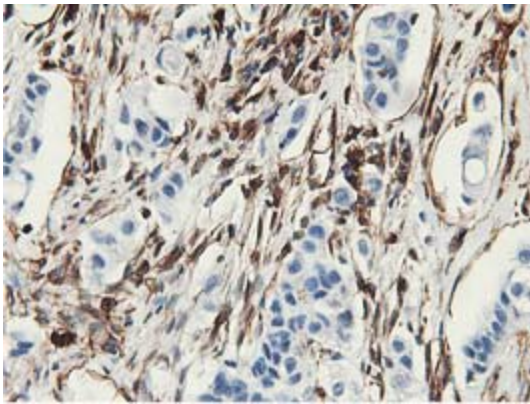
Western blot analysis of extracts (10ug) from 4 different cell lines by using anti-LXN monoclonal antibody (1:200).



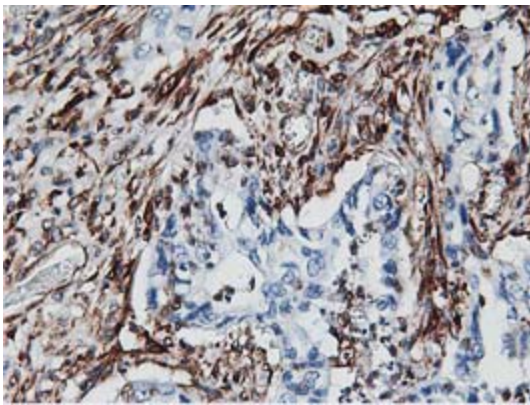
Equivalent amounts of cell lysates (10 ug per lane) of wild-type HeLa cells (WT, Cat# LC810HELA) and LXN-Knockout HeLa cells (KO, Cat# [LC812573]) were separated by SDS-PAGE and immunoblotted with anti-LXN monoclonal antibody [TA503779] (1:500). Then the blotted membrane was stripped and reprobed with anti-HSP90 antibody as a loading control.



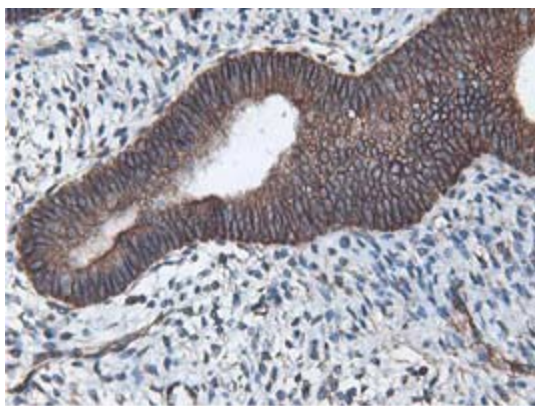
Immunohistochemical staining of paraffin-embedded Human Kidney tissue within the normal limits using anti-LXN mouse monoclonal antibody. (Heat-induced epitope retrieval by 10mM citric buffer, pH6.0, 100°C for 10min, [TA503779])



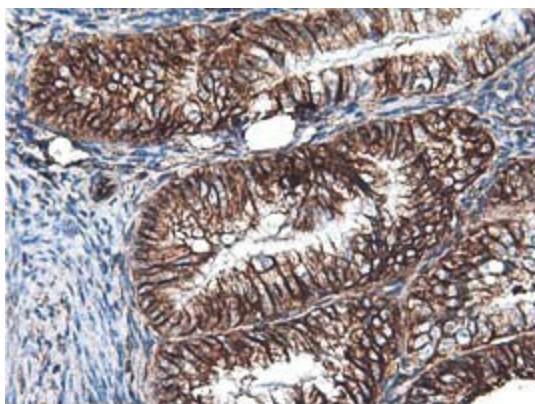
Immunohistochemical staining of paraffin-embedded Carcinoma of Human lung tissue using anti-LXN mouse monoclonal antibody. (Heat-induced epitope retrieval by 10mM citric buffer, pH6.0, 100°C for 10min, [TA503779])



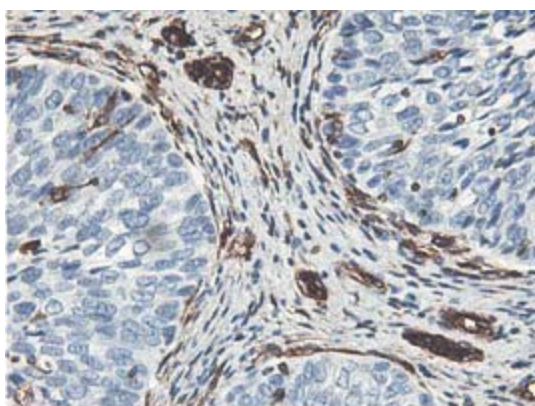
Immunohistochemical staining of paraffin-embedded Carcinoma of Human pancreas tissue using anti-LXN mouse monoclonal antibody. (Heat-induced epitope retrieval by 10mM citric buffer, pH6.0, 100°C for 10min, [TA503779])



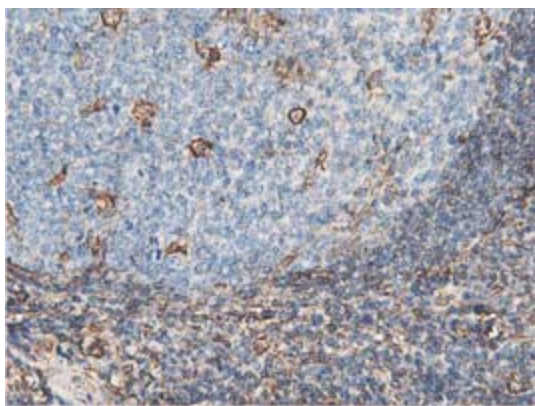
Immunohistochemical staining of paraffin-embedded Human endometrium tissue within the normal limits using anti-LXN mouse monoclonal antibody. (Heat-induced epitope retrieval by 10mM citric buffer, pH6.0, 100°C for 10min, [TA503779])



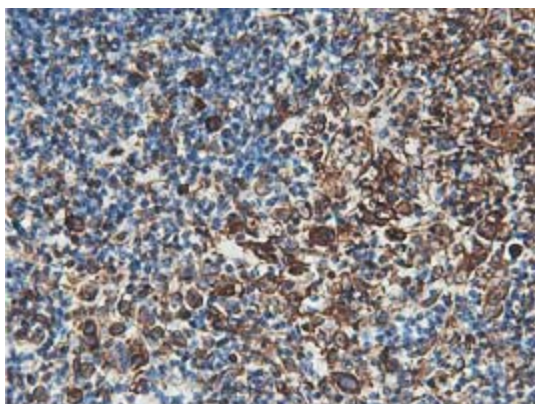
Immunohistochemical staining of paraffin-embedded Adenocarcinoma of Human endometrium tissue using anti-LXN mouse monoclonal antibody. (Heat-induced epitope retrieval by 10mM citric buffer, pH6.0, 100°C for 10min, [TA503779])



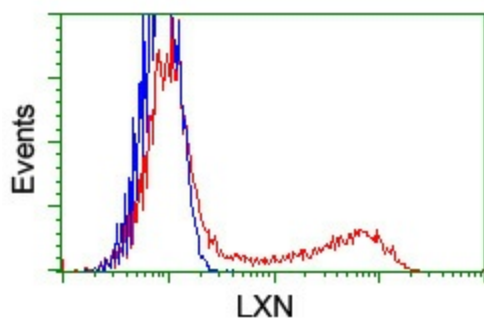
Immunohistochemical staining of paraffin-embedded Carcinoma of Human bladder tissue using anti-LXN mouse monoclonal antibody. (Heat-induced epitope retrieval by 10mM citric buffer, pH6.0, 100°C for 10min, [TA503779])



Immunohistochemical staining of paraffin-embedded Human lymph node tissue within the normal limits using anti-LXN mouse monoclonal antibody. (Heat-induced epitope retrieval by 10mM citric buffer, pH6.0, 100°C for 10min, [TA503779])



Immunohistochemical staining of paraffin-embedded Human lymphoma tissue using anti-LXN mouse monoclonal antibody. (Heat-induced epitope retrieval by 10mM citric buffer, pH6.0, 100°C for 10min, [TA503779])



HEK293T cells transfected with either [RC202769] overexpress plasmid (Red) or empty vector control plasmid (Blue) were immunostained by anti-LXN antibody ([TA503779]), and then analyzed by flow cytometry.