

## Product datasheet for **TA503779AM**

### LXN Mouse Monoclonal Antibody (Biotin conjugated) [Clone ID: OTI1E10]

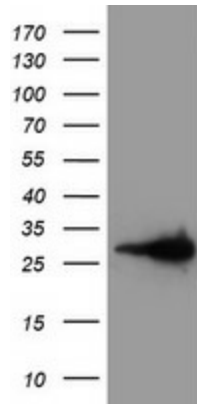
#### Product data:

|                         |  |
|-------------------------|--|
| Product Type:           | Primary Antibodies   |
| Clone Name:             | OTI1E10  |
| Applications:           | FC, IHC, WB  |
| Recommended Dilution:   | WB 1:2000, IHC 1:150, FLOW 1:100   |
| Reactivity:             | Human, Mouse   |
| Host:                   | Mouse  |
| Isotype:                | IgG1   |
| Clonality:              | Monoclonal   |
| Immunogen:              | Full length human recombinant protein of human LXN(NP_064554) produced in HEK293T cell.  |
| Formulation:            | PBS (pH 7.3) containing 1% BSA, 50% glycerol and 0.02% sodium azide.   |
| Concentration:          | 0.5 mg/ml  |
| Purification:           | Purified from mouse ascites fluids or tissue culture supernatant by affinity chromatography (protein A/G)                              |
| Conjugation:            | Biotin   |
| Storage:                | Store at -20°C as received.  |
| Stability:              | Stable for 12 months from date of receipt.   |
| Predicted Protein Size: | 25.6 kDa   |
| Gene Name:              | latexin  |
| Database Link:          | <a href="#">NP_064554</a><br><a href="#">Entrez Gene 17035 Mouse</a> <a href="#">Entrez Gene 56925 Human</a><br><a href="#">Q9BS40</a> |
| Background:             | This gene encodes the only known protein inhibitor of zinc-dependent metalloproteinases. [provided by RefSeq]                          |
| Synonyms:               | ECl; TCl   |

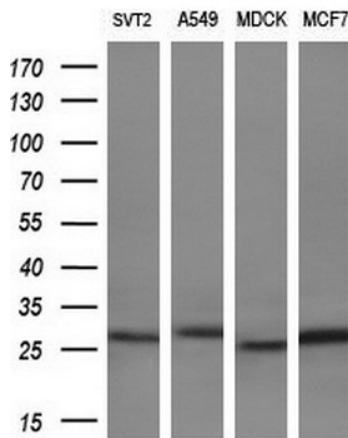


[View online »](#)

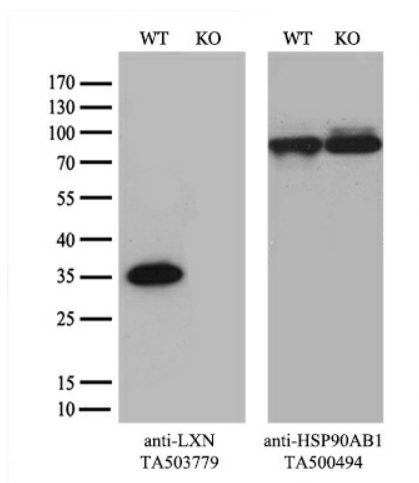
**Product images:**



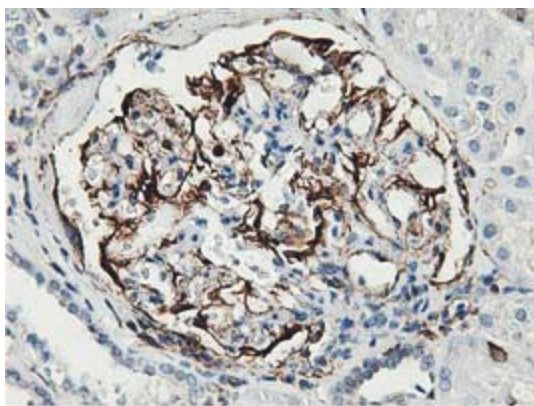
HEK293T cells were transfected with the pCMV6-ENTRY control (Cat# [PS100001], Left lane) or pCMV6-ENTRY LXN (Cat# [RC202769], Right lane) cDNA for 48 hrs and lysed. Equivalent amounts of cell lysates (5 ug per lane) were separated by SDS-PAGE and immunoblotted with anti-LXN (Cat# [TA503779]). Positive lysates [LY412596] (100ug) and [LC412596] (20ug) can be purchased separately from OriGene.



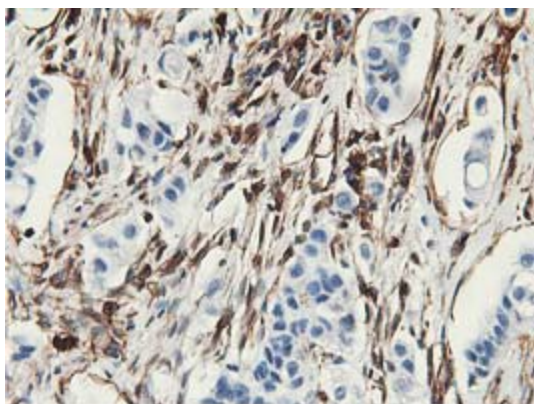
Western blot analysis of extracts (10ug) from 4 different cell lines by using anti-LXN monoclonal antibody (1:200).



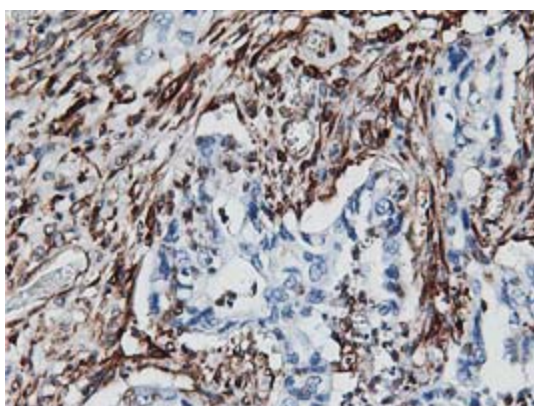
Equivalent amounts of cell lysates (10 ug per lane) of wild-type HeLa cells (WT, Cat# LC810HELA) and LXN-Knockout HeLa cells (KO, Cat# [LC812573]) were separated by SDS-PAGE and immunoblotted with anti-LXN monoclonal antibody [TA503779] (1:500). Then the blotted membrane was stripped and reprobed with anti-HSP90 antibody as a loading control.



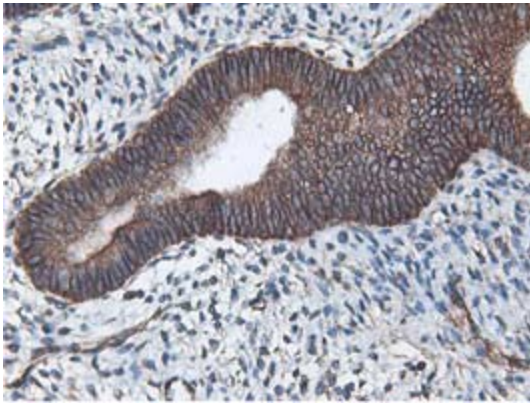
Immunohistochemical staining of paraffin-embedded Human Kidney tissue within the normal limits using anti-LXN mouse monoclonal antibody. (Heat-induced epitope retrieval by 10mM citric buffer, pH6.0, 100°C for 10min, [TA503779])



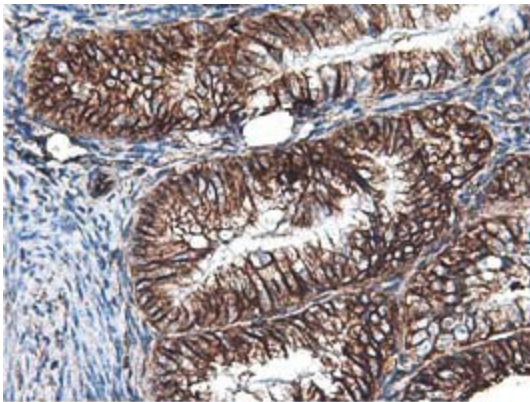
Immunohistochemical staining of paraffin-embedded Carcinoma of Human lung tissue using anti-LXN mouse monoclonal antibody. (Heat-induced epitope retrieval by 10mM citric buffer, pH6.0, 100°C for 10min, [TA503779])



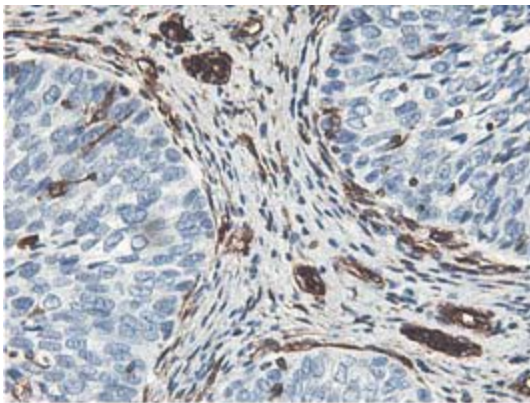
Immunohistochemical staining of paraffin-embedded Carcinoma of Human pancreas tissue using anti-LXN mouse monoclonal antibody. (Heat-induced epitope retrieval by 10mM citric buffer, pH6.0, 100°C for 10min, [TA503779])



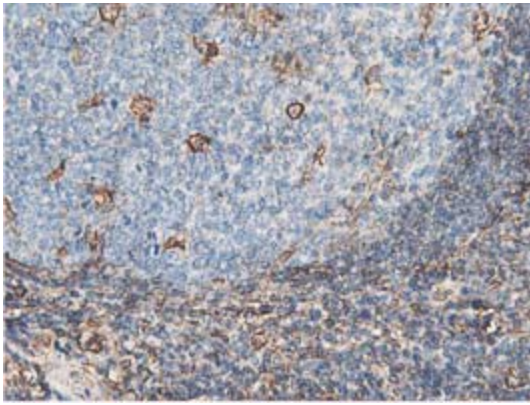
Immunohistochemical staining of paraffin-embedded Human endometrium tissue within the normal limits using anti-LXN mouse monoclonal antibody. (Heat-induced epitope retrieval by 10mM citric buffer, pH6.0, 100°C for 10min, [TA503779])



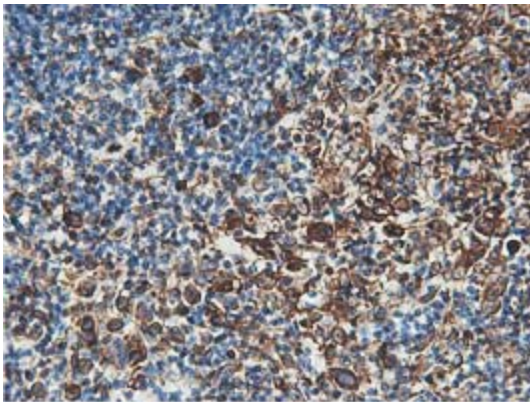
Immunohistochemical staining of paraffin-embedded Adenocarcinoma of Human endometrium tissue using anti-LXN mouse monoclonal antibody. (Heat-induced epitope retrieval by 10mM citric buffer, pH6.0, 100°C for 10min, [TA503779])



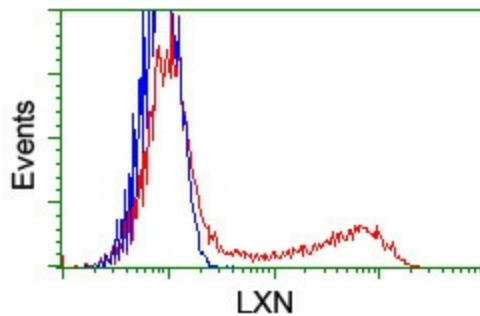
Immunohistochemical staining of paraffin-embedded Carcinoma of Human bladder tissue using anti-LXN mouse monoclonal antibody. (Heat-induced epitope retrieval by 10mM citric buffer, pH6.0, 100°C for 10min, [TA503779])



Immunohistochemical staining of paraffin-embedded Human lymph node tissue within the normal limits using anti-LXN mouse monoclonal antibody. (Heat-induced epitope retrieval by 10mM citric buffer, pH6.0, 100°C for 10min, [TA503779])



Immunohistochemical staining of paraffin-embedded Human lymphoma tissue using anti-LXN mouse monoclonal antibody. (Heat-induced epitope retrieval by 10mM citric buffer, pH6.0, 100°C for 10min, [TA503779])



HEK293T cells transfected with either [RC202769] overexpress plasmid (Red) or empty vector control plasmid (Blue) were immunostained by anti-LXN antibody ([TA503779]), and then analyzed by flow cytometry.