

## Product datasheet for **TA503775BM**

### **N Cadherin (CDH2) Mouse Monoclonal Antibody (HRP conjugated) [Clone ID: OTI3B10]**

#### **Product data:**

<b>Product Type:</b>	Primary Antibodies
<b>Clone Name:</b>	OTI3B10
<b>Applications:</b>	FC, IHC, WB
<b>Recommended Dilution:</b>	WB 1:2000, IHC 1:150, FLOW 1:100
<b>Reactivity:</b>	Human, Mouse, Rat
<b>Host:</b>	Mouse
<b>Isotype:</b>	IgG2a
<b>Clonality:</b>	Monoclonal
<b>Immunogen:</b>	Full length human recombinant protein of human CDH2(NP_001783) produced in HEK293T cell.
<b>Formulation:</b>	PBS (pH 7.3) containing 1% BSA, 50% glycerol.
<b>Concentration:</b>	0.5 mg/ml
<b>Purification:</b>	Purified from mouse ascites fluids or tissue culture supernatant by affinity chromatography (protein A/G)
<b>Conjugation:</b>	HRP
<b>Storage:</b>	Store at -20°C as received.
<b>Stability:</b>	Stable for 12 months from date of receipt.
<b>Predicted Protein Size:</b>	97.2 kDa
<b>Gene Name:</b>	cadherin 2
<b>Database Link:</b>	<a href="#">NP_001783</a> <a href="#">Entrez Gene 12558 Mouse</a> <a href="#">Entrez Gene 83501 Rat</a> <a href="#">Entrez Gene 1000 Human</a> <a href="#">P19022</a>
<b>Background:</b>	This gene is a classical cadherin from the cadherin superfamily. The encoded protein is a calcium dependent cell-cell adhesion glycoprotein comprised of five extracellular cadherin repeats, a transmembrane region and a highly conserved cytoplasmic tail. The protein functions during gastrulation and is required for establishment of left-right asymmetry. At certain central nervous system synapses, presynaptic to postsynaptic adhesion is mediated at least in part by this gene product. [provided by RefSeq]



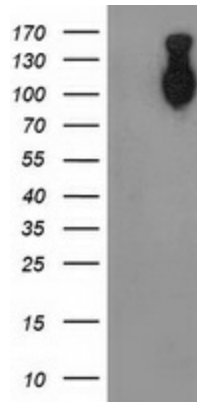
[View online »](#)

**Synonyms:** CD325; CDHN; CDw325; NCAD

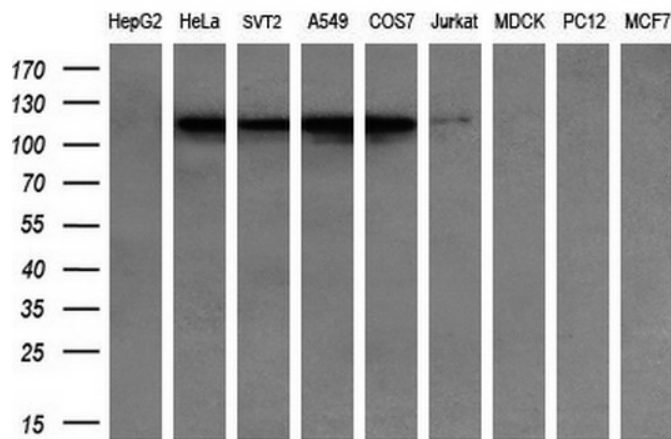
**Protein Families:** Druggable Genome, ES Cell Differentiation/IPS, Transmembrane

**Protein Pathways:** Arrhythmogenic right ventricular cardiomyopathy (ARVC), Cell adhesion molecules (CAMs)

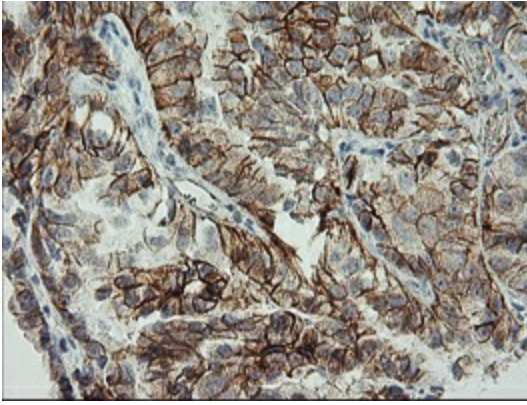
**Product images:**



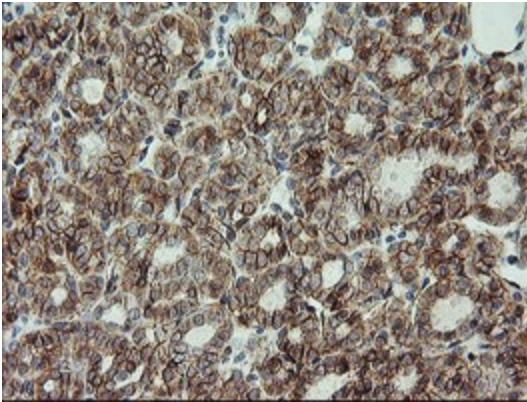
HEK293T cells were transfected with the pCMV6-ENTRY control (Left lane) or pCMV6-ENTRY CDH2 ([RC207170], Right lane) cDNA for 48 hrs and lysed. Equivalent amounts of cell lysates (5 ug per lane) were separated by SDS-PAGE and immunoblotted with anti-CDH2. Positive lysates [LY419743] (100ug) and [LC419743] (20ug) can be purchased separately from OriGene.



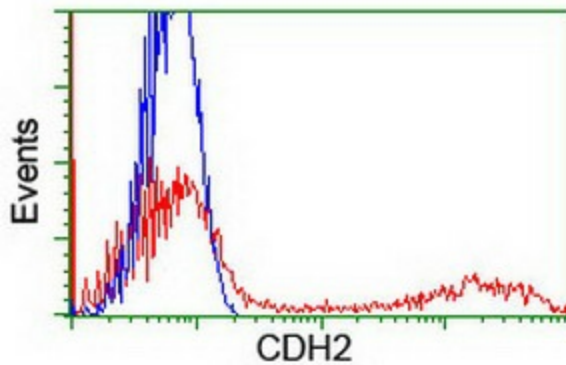
Western blot analysis of extracts (35ug) from 9 different cell lines by using anti-CDH2 monoclonal antibody (HepG2: human; HeLa: human; SVT2: mouse; A549: human; COS7: monkey; Jurkat: human; MDCK: canine; PC12: rat; MCF7: human) (1:200).



Immunohistochemical staining of paraffin-embedded Adenocarcinoma of Human ovary tissue using anti-CDH2 mouse monoclonal antibody. (Heat-induced epitope retrieval by 10mM citric buffer, pH6.0, 100°C for 10min, [TA503775])



Immunohistochemical staining of paraffin-embedded Carcinoma of Human thyroid tissue using anti-CDH2 mouse monoclonal antibody. (Heat-induced epitope retrieval by 10mM citric buffer, pH6.0, 100°C for 10min, [TA503775])



HEK293T cells transfected with either [RC207170] overexpress plasmid (Red) or empty vector control plasmid (Blue) were immunostained by anti-CDH2 antibody ([TA503775]), and then analyzed by flow cytometry.