

Product datasheet for **TA503772AM**

EFEMP1 Mouse Monoclonal Antibody (Biotin conjugated) [Clone ID: OTI1D9]

Product data:

Product Type:	Primary Antibodies
Clone Name:	OTI1D9
Applications:	FC, WB
Recommended Dilution:	WB 1:200~500, FLOW 1:100
Reactivity:	Human, Mouse, Rat
Host:	Mouse
Isotype:	IgG2a
Clonality:	Monoclonal
Immunogen:	Full length human recombinant protein of human EFEMP1(NP_004096) produced in HEK293T cell.
Formulation:	PBS (pH 7.3) containing 1% BSA, 50% glycerol and 0.02% sodium azide.
Concentration:	0.5 mg/ml
Purification:	Purified from mouse ascites fluids or tissue culture supernatant by affinity chromatography (protein A/G)
Conjugation:	Biotin
Storage:	Store at -20°C as received.
Stability:	Stable for 12 months from date of receipt.
Predicted Protein Size:	52.7 kDa
Gene Name:	EGF containing fibulin extracellular matrix protein 1
Database Link:	NP_004096 Entrez Gene 216616 Mouse Entrez Gene 305604 Rat Entrez Gene 2202 Human Q12805



[View online »](#)

Background:

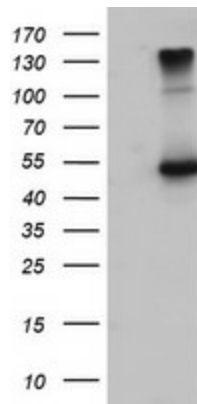
This gene encodes a member of the fibulin family of extracellular matrix glycoproteins. Like all members of this family, the encoded protein contains tandemly repeated epidermal growth factor-like repeats followed by a C-terminus fibulin-type domain. This gene is upregulated in malignant gliomas and may play a role in the aggressive nature of these tumors. Mutations in this gene are associated with Doyme honeycomb retinal dystrophy. Alternatively spliced transcript variants that encode the same protein have been described. [provided by RefSeq]

Synonyms:

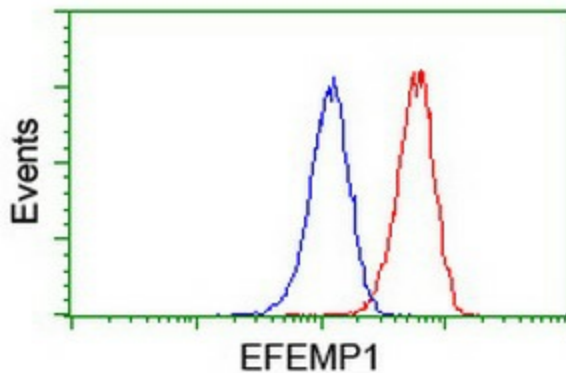
DHRD; DRAD; EGF-containing fibulin-like extracellular matrix protein 1; FBLN3; FBNL; fibrillin-like; fibulin 3; FLJ35535; MGC111353; MLVT; MTLV; S1-5

Protein Families:

Secreted Protein

Product images:


HEK293T cells were transfected with the pCMV6-ENTRY control (Cat# [PS100001], Left lane) or pCMV6-ENTRY EFEMP1 (Cat# [RC214953], Right lane) cDNA for 48 hrs and lysed. Equivalent amounts of cell lysates (5 ug per lane) were separated by SDS-PAGE and immunoblotted with anti-EFEMP1 (Cat# [TA503772]). Positive lysates [LY418212] (100ug) and [LC418212] (20ug) can be purchased separately from OriGene.



Flow cytometric Analysis of Jurkat cells, using anti-EFEMP1 antibody ([TA503772]), (Red), compared to a nonspecific negative control antibody, (Blue).