

## Product datasheet for **TA503766S**

### **KRTAP2-4 Mouse Monoclonal Antibody [Clone ID: OTI3B4]**

#### **Product data:**

Product Type:	Primary Antibodies
Clone Name:	OTI3B4
Applications:	FC, IHC, WB
Recommended Dilution:	WB 1:500, IHC 1:150, FLOW 1:100
Reactivity:	Human, Mouse, Rat
Host:	Mouse
Isotype:	IgG1
Clonality:	Monoclonal
Immunogen:	Human recombinant protein fragment corresponding to amino acids 1-128 of human KRTAP2(NP_149440) produced in E.coli.
Formulation:	PBS (pH 7.3) containing 1% BSA, 50% glycerol and 0.02% sodium azide.
Concentration:	1 mg/ml
Purification:	Purified from mouse ascites fluids or tissue culture supernatant by affinity chromatography (protein A/G)
Conjugation:	Unconjugated
Storage:	Store at -20°C as received.
Stability:	Stable for 12 months from date of receipt.
Predicted Protein Size:	13.3 kDa
Gene Name:	keratin associated protein 2-4
Database Link:	<a href="#">NP_149440</a> <a href="#">Entrez Gene 85294 Human</a> <a href="#">P0C7H8</a>



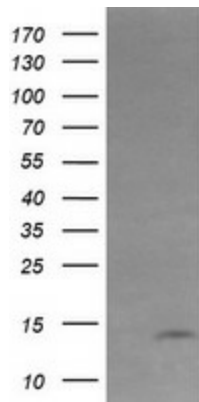
[View online »](#)

**Background:**

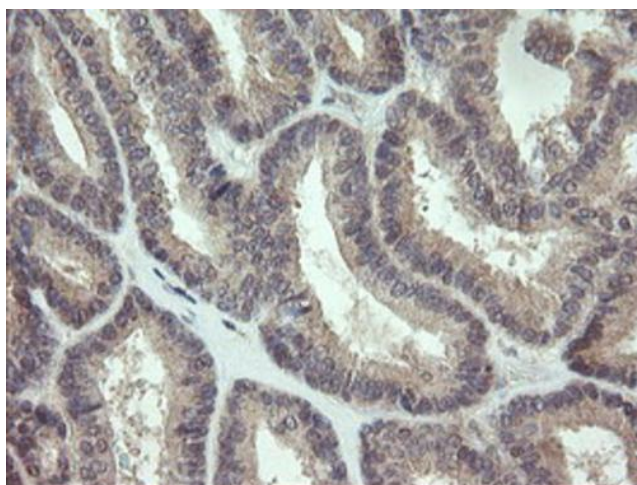
This protein is a member of the keratin-associated protein (KAP) family. The KAP proteins form a matrix of keratin intermediate filaments which contribute to the structure of hair fibers. KAP family members appear to have unique, family-specific amino- and carboxyl-terminal regions and are subdivided into three multi-gene families according to amino acid composition: the high sulfur, the ultrahigh sulfur, and the high tyrosine/glycine KAPs. This protein is a member of the high sulfur KAP family and the gene is localized to a cluster of KAPs at 17q12-q21. [provided by RefSeq, Jul 2008]. COMPLETENESS: complete on the 3' end.

**Synonyms:**

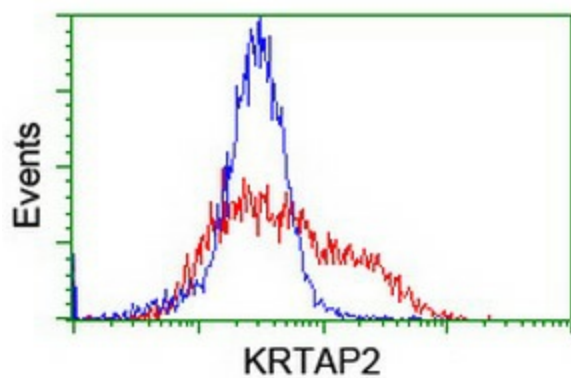
KAP2.1B; KAP2.4; KRTAP2.4

**Product images:**


HEK293T cells were transfected with the pCMV6-ENTRY control (Cat# [PS100001], Left lane) or pCMV6-ENTRY KRTAP2 (Cat# [RC215356], Right lane) cDNA for 48 hrs and lysed. Equivalent amounts of cell lysates (5 ug per lane) were separated by SDS-PAGE and immunoblotted with anti-KRTAP2 (Cat# [TA503766]). Positive lysates [LY403233] (100ug) and [LC403233] (20ug) can be purchased separately from OriGene.



Immunohistochemical staining of paraffin-embedded Adenocarcinoma of Human endometrium tissue using anti-KRTAP2 mouse monoclonal antibody. Heat-induced epitope retrieval by EDTA solution buffer pH 8.0 at 120°C for 3 min.



HEK293T cells transfected with either [RC215356] overexpress plasmid (Red) or empty vector control plasmid (Blue) were immunostained by anti-KRTAP2 antibody ([TA503766]), and then analyzed by flow cytometry.