

## Product datasheet for **TA503760AM**

### **katanin p80 (KATNB1) Mouse Monoclonal Antibody (Biotin conjugated) [Clone ID: OTI1A3]**

#### **Product data:**

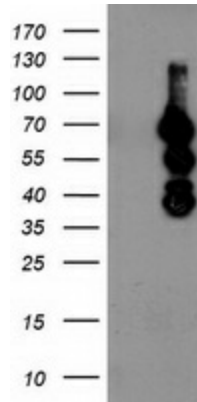
<b>Product Type:</b>	Primary Antibodies
<b>Clone Name:</b>	OTI1A3
<b>Applications:</b>	FC, WB
<b>Recommended Dilution:</b>	WB 1:2000, FLOW 1:100
<b>Reactivity:</b>	Human, Mouse, Rat
<b>Host:</b>	Mouse
<b>Isotype:</b>	IgG1
<b>Clonality:</b>	Monoclonal
<b>Immunogen:</b>	Full length human recombinant protein of human KATNB1(NP_005877) produced in HEK293T cell.
<b>Formulation:</b>	PBS (pH 7.3) containing 1% BSA, 50% glycerol and 0.02% sodium azide.
<b>Concentration:</b>	0.5 mg/ml
<b>Purification:</b>	Purified from mouse ascites fluids or tissue culture supernatant by affinity chromatography (protein A/G)
<b>Conjugation:</b>	Biotin
<b>Storage:</b>	Store at -20°C as received.
<b>Stability:</b>	Stable for 12 months from date of receipt.
<b>Predicted Protein Size:</b>	72.2 kDa
<b>Gene Name:</b>	katanin regulatory subunit B1
<b>Database Link:</b>	<a href="#">NP_005877</a> <a href="#">Entrez Gene 10300 Human</a> <a href="#">Q9BVA0</a>
<b>Background:</b>	Microtubules, polymers of alpha and beta tubulin subunits, form the mitotic spindle of a dividing cell and help to organize membranous organelles during interphase. Katanin is a heterodimer that consists of a 60 kDa ATPase (p60 subunit A 1) and an 80 kDa accessory protein (p80 subunit B 1). The p60 subunit acts to sever and disassemble microtubules, while the p80 subunit targets the enzyme to the centrosome. Katanin is a member of the AAA family of ATPases. [provided by RefSeq]



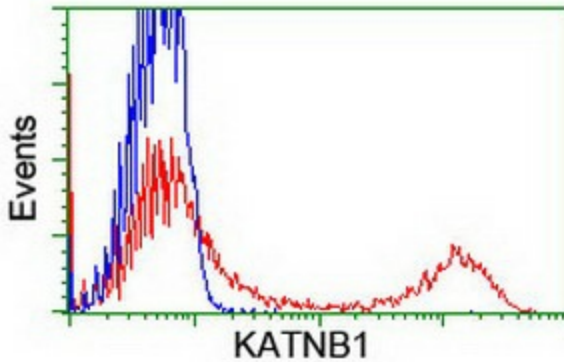
[View online »](#)

Synonyms: KAT; LIS6

**Product images:**



HEK293T cells were transfected with the pCMV6-ENTRY control (Left lane) or pCMV6-ENTRY KATNB1 ([RC201852], Right lane) cDNA for 48 hrs and lysed. Equivalent amounts of cell lysates (5 ug per lane) were separated by SDS-PAGE and immunoblotted with anti-KATNB1. Positive lysates [LY417004] (100ug) and [LC417004] (20ug) can be purchased separately from OriGene.



HEK293T cells transfected with either [RC201852] overexpress plasmid (Red) or empty vector control plasmid (Blue) were immunostained by anti-KATNB1 antibody ([TA503760]), and then analyzed by flow cytometry.