

Product datasheet for **TA503759BM**

Estrogen Receptor 1 (ESR1) Mouse Monoclonal Antibody (HRP conjugated) [Clone ID: OTI1B1]

Product data:

Product Type:	Primary Antibodies
Clone Name:	OTI1B1
Applications:	IHC, WB
Recommended Dilution:	WB 1:2000, IHC 1:150
Reactivity:	Human, Mouse, Rat
Host:	Mouse
Isotype:	IgG2b
Clonality:	Monoclonal
Immunogen:	Full length human recombinant protein of human ESR1(NP_000116) produced in HEK293T cell.
Formulation:	PBS (pH 7.3) containing 1% BSA, 50% glycerol.
Concentration:	0.5 mg/ml
Purification:	Purified from mouse ascites fluids or tissue culture supernatant by affinity chromatography (protein A/G)
Conjugation:	HRP
Storage:	Store at -20°C as received.
Stability:	Stable for 12 months from date of receipt.
Predicted Protein Size:	66 kDa
Gene Name:	estrogen receptor 1
Database Link:	NP_000116 Entrez Gene 13982 Mouse Entrez Gene 24890 Rat Entrez Gene 2099 Human P03372



[View online »](#)

Background:

This gene encodes an estrogen receptor, a ligand-activated transcription factor composed of several domains important for hormone binding, DNA binding, and activation of transcription. The protein localizes to the nucleus where it may form a homodimer or a heterodimer with estrogen receptor 2. Estrogen and its receptors are essential for sexual development and reproductive function, but also play a role in other tissues such as bone. Estrogen receptors are also involved in pathological processes including breast cancer, endometrial cancer, and osteoporosis. Alternative splicing results in several transcript variants, which differ in their 5' UTRs and use different promoters. [provided by RefSeq, Jul 2008]

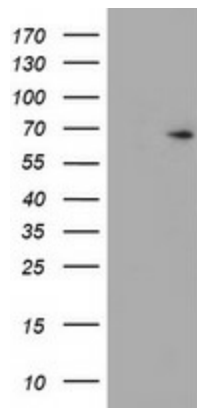
Synonyms:

ER; Era; ESR; ESRA; ESTRR; NR3A1

Protein Families:

Druggable Genome, Nuclear Hormone Receptor, Transcription Factors

Product images:



HEK293T cells were transfected with the pCMV6-ENTRY control (Cat# [PS100001], Left lane) or pCMV6-ENTRY ESR1 (Cat# [RC213277], Right lane) cDNA for 48 hrs and lysed. Equivalent amounts of cell lysates (5 ug per lane) were separated by SDS-PAGE and immunoblotted with anti-ESR1 (Cat# [TA503759]). Positive lysates [LY400046] (100ug) and [LC400046] (20ug) can be purchased separately from OriGene.

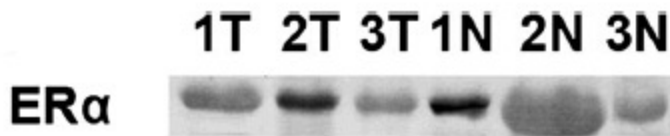
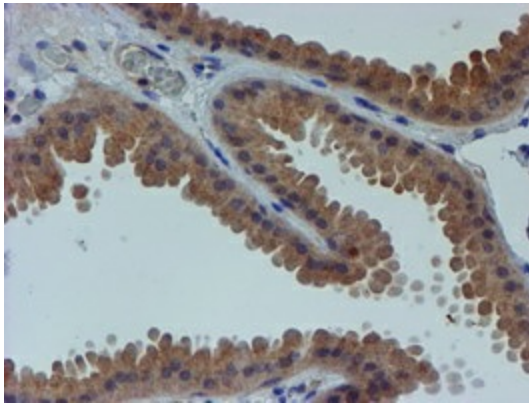
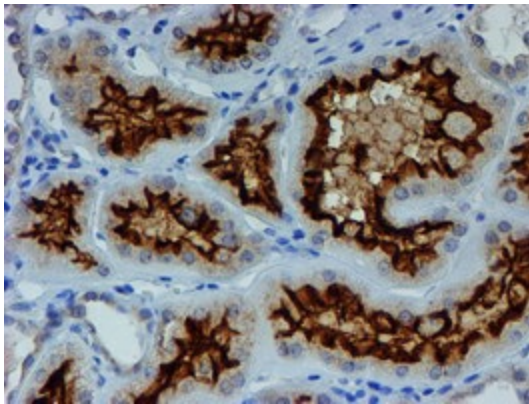


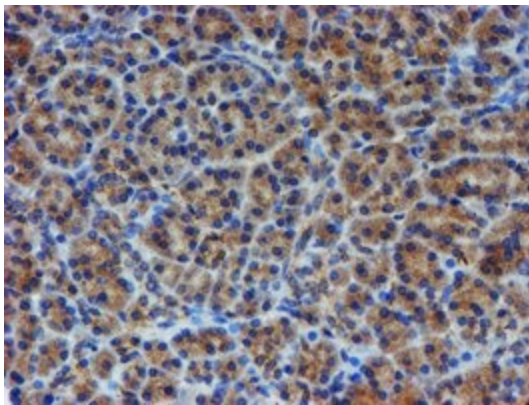
Figure from citation: Western Blot of ESR1 protein level by using anti-ESR1 antibody in human breast cancer tissues (T) and normal tissues (N). [View Citation](#)



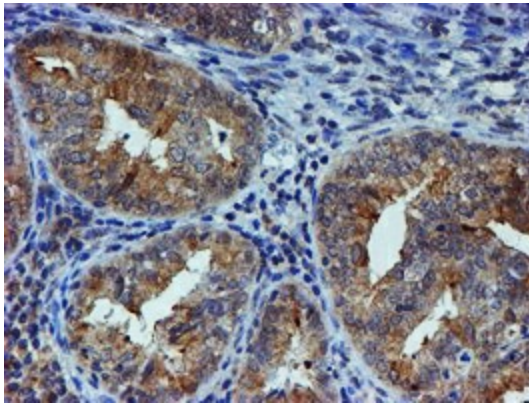
Immunohistochemical staining of paraffin-embedded Human breast tissue within the normal limits using anti-ESR1 mouse monoclonal antibody. (Heat-induced epitope retrieval by 10mM citric buffer, pH6.0, 100°C for 10min, [TA503759])



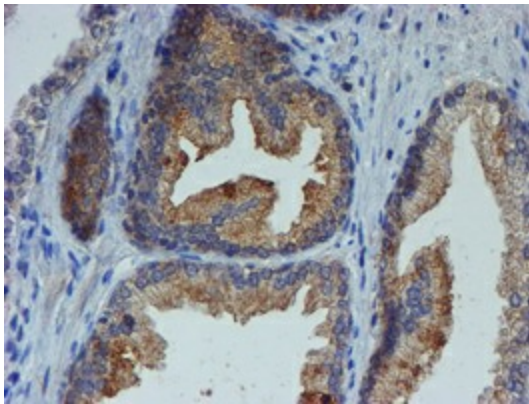
Immunohistochemical staining of paraffin-embedded Human Kidney tissue within the normal limits using anti-ESR1 mouse monoclonal antibody. (Heat-induced epitope retrieval by 10mM citric buffer, pH6.0, 100°C for 10min, [TA503759])



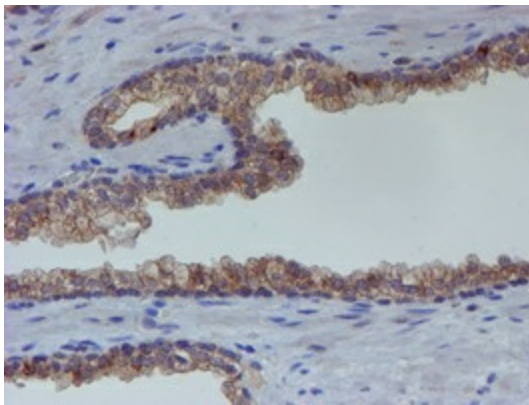
Immunohistochemical staining of paraffin-embedded Human pancreas tissue within the normal limits using anti-ESR1 mouse monoclonal antibody. (Heat-induced epitope retrieval by 10mM citric buffer, pH6.0, 100°C for 10min, [TA503759])



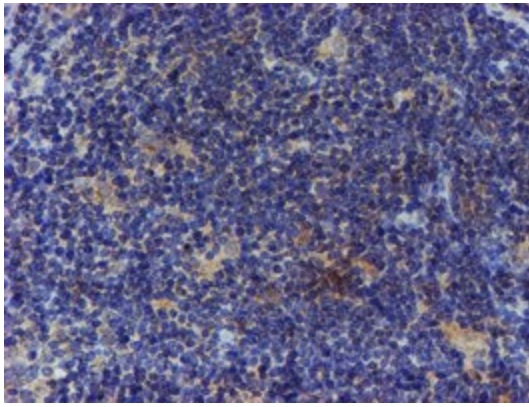
Immunohistochemical staining of paraffin-embedded Adenocarcinoma of Human endometrium tissue using anti-ESR1 mouse monoclonal antibody. (Heat-induced epitope retrieval by 10mM citric buffer, pH6.0, 100°C for 10min, [TA503759])



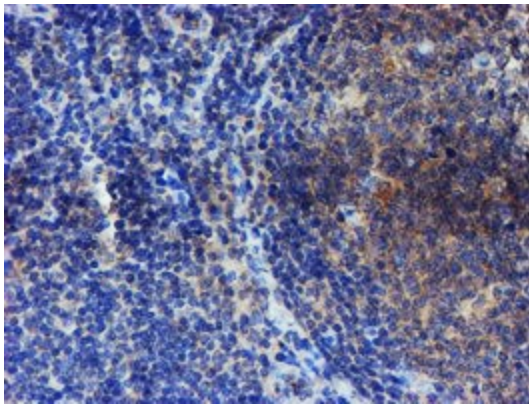
Immunohistochemical staining of paraffin-embedded Human prostate tissue within the normal limits using anti-ESR1 mouse monoclonal antibody. (Heat-induced epitope retrieval by 10mM citric buffer, pH6.0, 100°C for 10min, [TA503759])



Immunohistochemical staining of paraffin-embedded Carcinoma of Human prostate tissue using anti-ESR1 mouse monoclonal antibody. (Heat-induced epitope retrieval by 10mM citric buffer, pH6.0, 100°C for 10min, [TA503759])



Immunohistochemical staining of paraffin-embedded Human lymphoma tissue using anti-ESR1 mouse monoclonal antibody. (Heat-induced epitope retrieval by 10mM citric buffer, pH6.0, 100°C for 10min, [TA503759])



Immunohistochemical staining of paraffin-embedded Human tonsil within the normal limits using anti-ESR1 mouse monoclonal antibody. (Heat-induced epitope retrieval by 10mM citric buffer, pH6.0, 100°C for 10min, [TA503759])