

## Product datasheet for **TA503740AM**

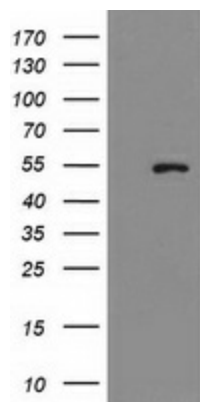
### PRMT2 Mouse Monoclonal Antibody (Biotin conjugated) [Clone ID: OTI1A2]

#### Product data:

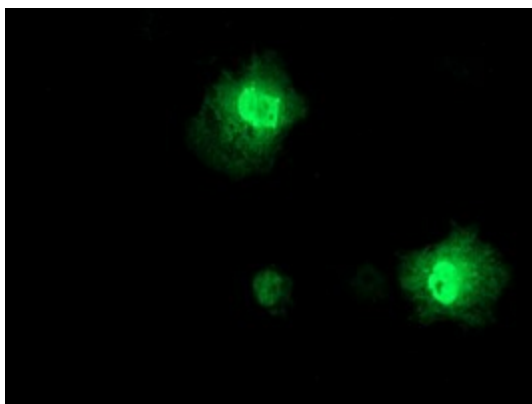
Product Type:	Primary Antibodies
Clone Name:	OTI1A2
Applications:	IF, WB
Recommended Dilution:	WB 1:2000, IF 1:100
Reactivity:	Human, Mouse, Rat
Host:	Mouse
Isotype:	IgG1
Clonality:	Monoclonal
Immunogen:	Full length human recombinant protein of human PRMT2(NP_001526) produced in HEK293T cell.
Formulation:	PBS (pH 7.3) containing 1% BSA, 50% glycerol and 0.02% sodium azide.
Concentration:	0.5 mg/ml
Purification:	Purified from mouse ascites fluids or tissue culture supernatant by affinity chromatography (protein A/G)
Conjugation:	Biotin
Storage:	Store at -20°C as received.
Stability:	Stable for 12 months from date of receipt.
Predicted Protein Size:	48.9 kDa
Gene Name:	protein arginine methyltransferase 2
Database Link:	<a href="#">NP_001526</a> <a href="#">Entrez Gene 15468 Mouse</a> <a href="#">Entrez Gene 499420 Rat</a> <a href="#">Entrez Gene 3275 Human</a> <a href="#">P55345</a>
Synonyms:	HRMT1L1
Protein Families:	Druggable Genome



[View online »](#)

**Product images:**

HEK293T cells were transfected with the pCMV6-ENTRY control (Left lane) or pCMV6-ENTRY PRMT2 ([RC218590], Right lane) cDNA for 48 hrs and lysed. Equivalent amounts of cell lysates (5 ug per lane) were separated by SDS-PAGE and immunoblotted with anti-PRMT2. Positive lysates [LY400590] (100ug) and [LC400590] (20ug) can be purchased separately from OriGene.



Anti-PRMT2 mouse monoclonal antibody ([TA503740]) immunofluorescent staining of COS7 cells transiently transfected by pCMV6-ENTRY PRMT2 ([RC218590]).