

Product datasheet for **TA503738AM**

APBB3 Mouse Monoclonal Antibody (Biotin conjugated) [Clone ID: OTI1G5]

Product data:

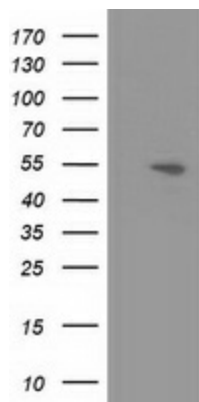
Product Type:	Primary Antibodies
Clone Name:	OTI1G5
Applications:	FC, WB
Recommended Dilution:	WB 1:2000, FLOW 1:100
Reactivity:	Human, Mouse, Rat
Host:	Mouse
Isotype:	IgG1
Clonality:	Monoclonal
Immunogen:	Full length human recombinant protein of human APBB3(NP_573419) produced in HEK293T cell.
Formulation:	PBS (pH 7.3) containing 1% BSA, 50% glycerol and 0.02% sodium azide.
Concentration:	0.5 mg/ml
Purification:	Purified from mouse ascites fluids or tissue culture supernatant by affinity chromatography (protein A/G)
Conjugation:	Biotin
Storage:	Store at -20°C as received.
Stability:	Stable for 12 months from date of receipt.
Predicted Protein Size:	52.4 kDa
Gene Name:	amyloid beta precursor protein binding family B member 3
Database Link:	NP_573419 Entrez Gene 117026 Rat Entrez Gene 225372 Mouse Entrez Gene 10307 Human O95704
Background:	The protein encoded by this gene is a member of the APBB protein family. It is found in the cytoplasm and binds to the intracellular domain of the Alzheimer's disease beta-amyloid precursor protein (APP) as well as to other APP-like proteins. It is thought that the protein encoded by this gene may modulate the internalization of APP. Multiple transcript variants encoding several different isoforms have been found for this gene. [provided by RefSeq]



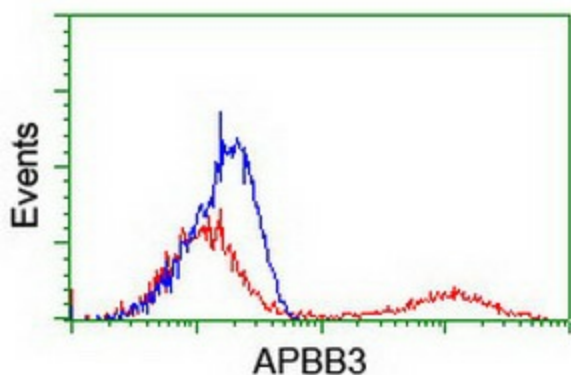
[View online »](#)

Synonyms: FE65L2; SRA

Product images:



HEK293T cells were transfected with the pCMV6-ENTRY control (Left lane) or pCMV6-ENTRY APBB3 ([RC219752], Right lane) cDNA for 48 hrs and lysed. Equivalent amounts of cell lysates (5 ug per lane) were separated by SDS-PAGE and immunoblotted with anti-APBB3. Positive lysates [LY408843] (100ug) and [LC408843] (20ug) can be purchased separately from OriGene.



HEK293T cells transfected with either [RC219752] overexpress plasmid (Red) or empty vector control plasmid (Blue) were immunostained by anti-APBB3 antibody ([TA503738]), and then analyzed by flow cytometry.